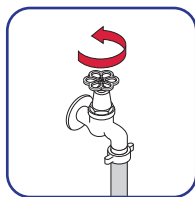
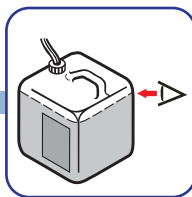


### 开机



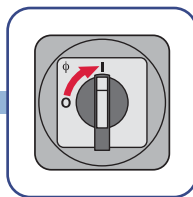
开水龙头



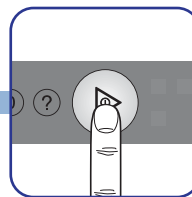
检查药液



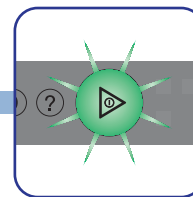
检查门帘,  
关闭机门



打开主开关



按启动按钮,注水



绿灯闪烁,  
注水或加热中

### 清洗



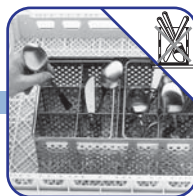
盘装筐



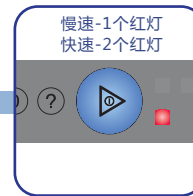
杯装筐



刀/叉/勺/  
筷子装筐



绿灯长亮,按启动  
按钮,准备清洗

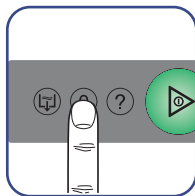


蓝灯长亮,按启动  
按钮,选择速度

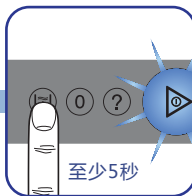


花洒预洗,  
送筐清洗

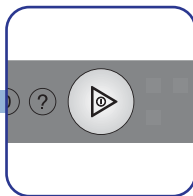
### 结束



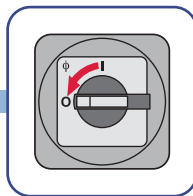
清洗结束,  
按停止按钮



按排水钮,蓝灯  
闪烁,排水



启动按钮熄灭,  
排水完毕



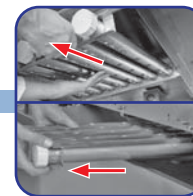
关闭主开关



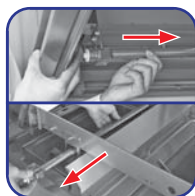
打开机门



拆水帘并清洗



拆上下清洗臂  
及端盖并清洗



拆上下喷淋臂  
清洗喷嘴(如需要)



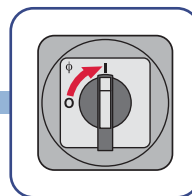
拆过滤篮并清洗



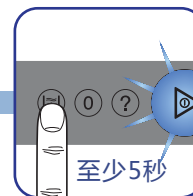
拆水箱过滤板并清洗



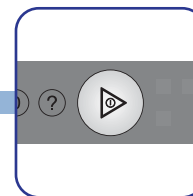
冲洗机器内部  
(避免垃圾残留)



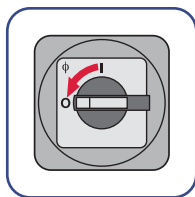
打开主开关



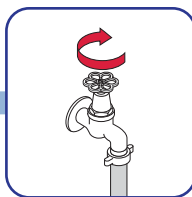
按排水钮,蓝灯  
闪烁,排水



启动按钮熄灭,  
排水完毕



关闭主开关



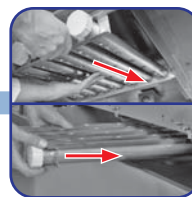
关水龙头



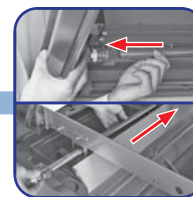
安装水箱过滤板



安装过滤篮



安装清洗臂



安装喷淋臂



安装水帘,保持门打开