

| PNC | Model | Ref | Pag. | Brand | Version | Notes |
|--------|------------|-----|-------|-------|---------|---------------------------|
| 391063 | E9GRGDGCF0 | a | 2...4 | ELX | GAS | GAS GRILL 400 MM |
| 391064 | E9GRGHGCF0 | b | 2...4 | ELX | GAS | GAS GRILL 800 MM |
| 391197 | E9GRTDG00 | c | 2...4 | ELX | GAS | GAS GRILL 400 MM TOWN GAS |
| 391198 | E9GRTHGC00 | d | 2...4 | ELX | GAS | GAS GRILL 800 MM TOWN GAS |
| 391075 | E9GREDGCF0 | e | 2...4 | ELX | EL | ELECTRIC GRILL 400 MM |
| 391076 | E9GREHGCF0 | f | 2...4 | ELX | EL | ELECTRIC GRILL 800 MM |
| 392063 | Z9GRGDGCF0 | g | 2...4 | ZAN | GAS | GAS GRILL 400 MM |
| 392064 | Z9GRGHGCF0 | h | 2...4 | ZAN | GAS | GAS GRILL 800 MM |
| 392197 | Z9GRTDG00 | i | 2...4 | ZAN | GAS | GAS GRILL 400 MM TOWN GAS |
| 392198 | Z9GRTHGC00 | l | 2...4 | ZAN | GAS | GAS GRILL 800 MM TOWN GAS |
| 392075 | Z9GREDGCF0 | m | 2...4 | ZAN | EL | ELECTRIC GRILL 400 MM |
| 392076 | Z9GREHGCF0 | n | 2...4 | ZAN | EL | ELECTRIC GRILL 800 MM |
| 393063 | A9GRGDGCF0 | o | 2...4 | OEM | GAS | GAS GRILL 400 MM |
| 393064 | A9GRGHGCF0 | p | 2...4 | OEM | GAS | GAS GRILL 800 MM |
| 393075 | A9GREDGCF0 | q | 2...4 | OEM | EL | ELECTRIC GRILL 400 MM |
| 393076 | A9GREHGCF0 | r | 2...4 | OEM | EL | ELECTRIC GRILL 800 MM |

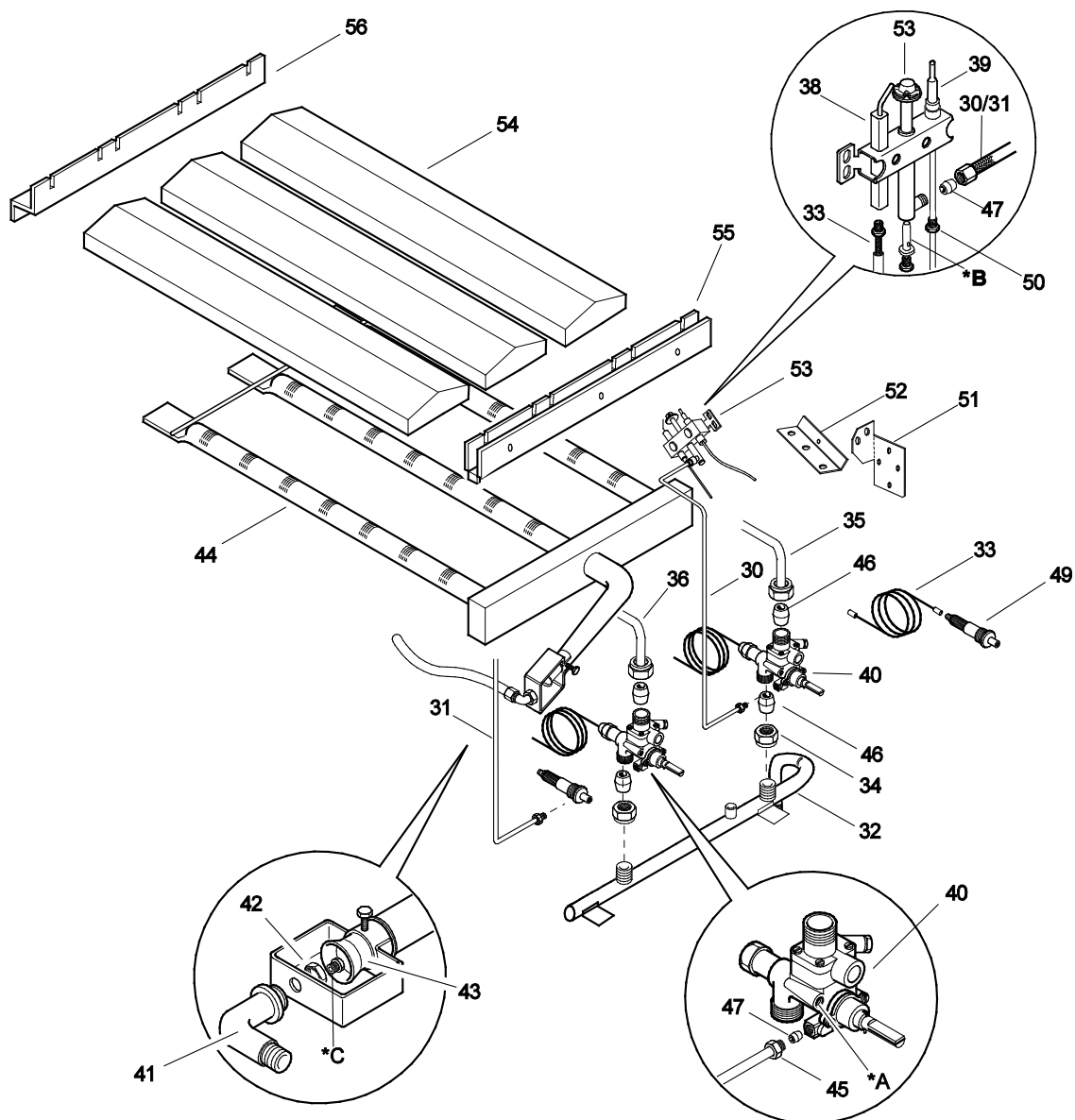
| Pag | Index | Indice | Note |
|------|---------------------|----------------------|------|
| 2 | General componets | Componenti struttura | |
| 3 | Gas components | Componenti Gas | |
| 4 | Electric Components | Componenti elettrici | |
| 5,6, | Spare parts list | Lista ricambi | |

Brand/Marchio: All
Factory code: 9PDX

From sr. Nr/ Da Ser. Nr.: 116

Page: 1 Ed. 2013 04

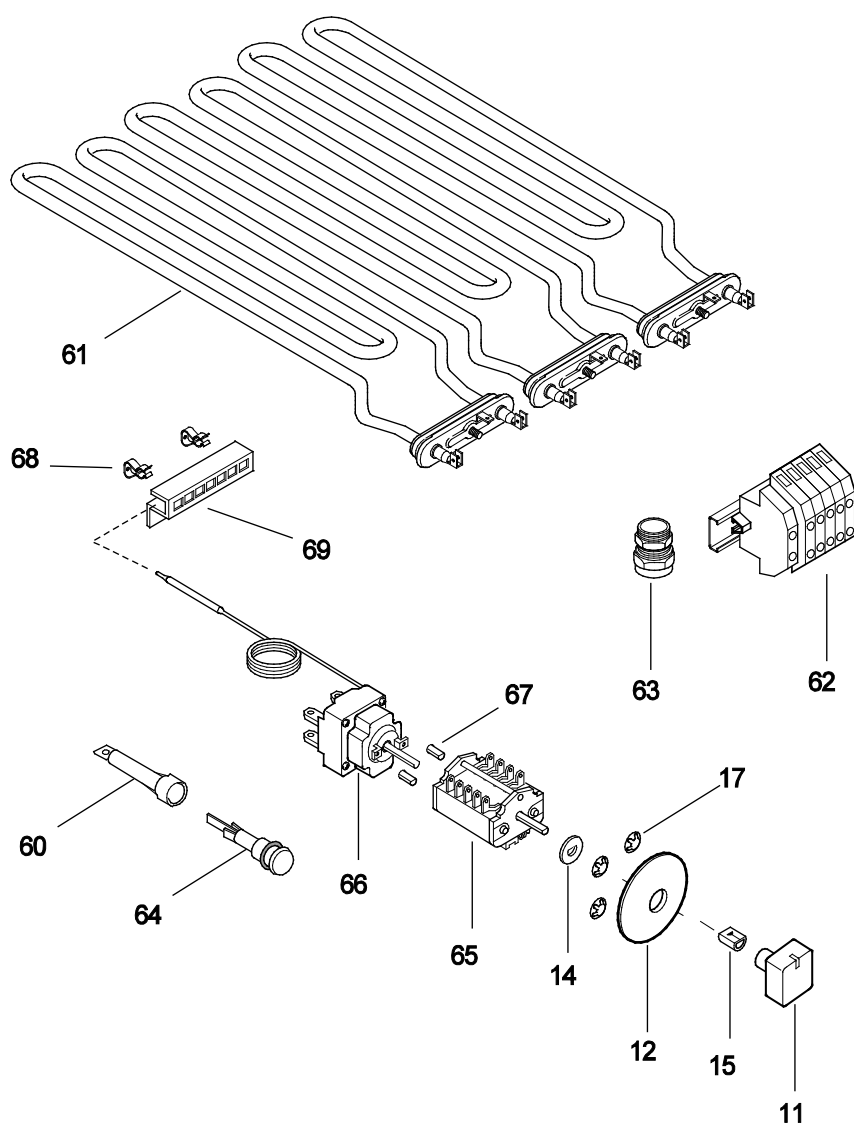
Doc. Nr.: **059785FZ00**



| A - Vite di minimo / Min screw | | | |
|--------------------------------|-------------|--------|---------------|
| Spare Code | Ref./ Notes | | |
| 002993 | n°180 | 2H/2E+ | G20 20mbar |
| 002993 | n°180 | 2H | G20 25mbar |
| 002993 | n°180 | 2ELL | G25 20mbar |
| 002993 | n°180 | 2L | G25 25mbar |
| 002993 | n°180 | 2S | G25.1 25mbar |
| 056742 | n°110 | 3+3B/P | G30/31 30mbar |
| 056742 | n°110 | 3B/P | G30/31 36mbar |
| 002392 | n°95 | 3B/P | G30/31 50mbar |
| 002494 | n°220 | No CE | G20 10mbar |
| - | adjust | | G110 |
| - | adjust | | G120 |

| B - Ugello pilota / Pilot nozzle | | | | |
|----------------------------------|-------------|--------|---------------|--|
| Spare Code | Ref./ Notes | | | Ref / appliances |
| 056656 | n°35 | 2H/2E+ | G20 20mbar | e,f,m,n,o,p,q,r e,f,m,n,o,p,q,r a,b,c,d,g,h,i,l a,b,c,d,g,h,i,l |
| 056656 | n°35 | 2H | G20 25mbar | |
| 056656 | n°35 | 2ELL | G25 20mbar | |
| 056656 | n°35 | 2L | G25 25mbar | |
| 056656 | n°35 | 2S | G25.1 25mbar | |
| 058330 | n°25 | 3+3B/P | G30/31 30mbar | |
| 058330 | n°25 | 3B/P | G30/31 36mbar | |
| 058330 | n°25 | 3B/P | G30/31 50mbar | |
| 056656 | n°35 | No CE | G20 10mbar | |
| 056798 | n°70 | | G110 | |
| 056798 | n°70 | | G120 | |
| 059381 | n°75 | | G110 | |
| 059381 | n°75 | | G120 | |

| C - Ugello bruciatore / Burner nozzle | | | | |
|---------------------------------------|--------------|--------|---------------|--|
| Spare Code | Ref. / Notes | | | |
| 059382 | ø2.50 | 2H/2E+ | G20 20mbar | |
| 0A5356 | ø2.35 | 2H | G20 25mbar | |
| 0A2868 | ø2.75 | 2ELL | G25 20mbar | |
| 0A2570 | ø2.60 | 2L | G25 25mbar | |
| 0A2570 | ø2.60 | 2S | G25.1 25mbar | |
| 0A2141 | ø1.65 | 3+3B/P | G30/31 30mbar | |
| 0A2103 | ø1.55 | 3B/P | G30/31 36mbar | |
| 0A2091 | ø1.45 | 3B/P | G30/31 50mbar | |
| 059358 | ø2,85 | No CE | G20 10mbar | |
| 0C0449 | ø5.40 | | G110 | |
| 003951 | ø4.70 | | G120 | |



GRIGLIA GAS ED ELETTRICA E900XP
GAS AND ELECTRIC GRILL E900XP

| <i>Pos</i> | <i>Factory Code</i> | <i>Spare Code</i> | <i>Descrizione</i> | <i>Description</i> | <i>Ref./Note</i> |
|------------|---------------------|-------------------|--------------------------------|------------------------------|------------------|
| 1 | 0510820802 | 0C0450 | GRIGLIA GOLOSA GHISA 400mm | CAST IRON GRID 400mm | 400 mm |
| 1 | 0510820902 | 0C0424 | GRIGLIA GOLOSA GHISA 800mm | CAST IRON GRID 800mm | 800 mm |
| 2a | 0530881501 | 0C5261 | PARETE POST. PARASPRUZZI 400mm | BACK PANEL SPLASHBACK 400mm | 400 mm |
| 2a | 0530881601 | 0C5262 | PARETE POST. PARASPRUZZI 800mm | BACK PANEL SPLASHBACK 800mm | 800 mm |
| 2b | 0530881401 | 0C5263 | PARETE SINISTRA PARASPRUZZI | LEFT PANEL SPLASHBACK | |
| 2c | 0530881201 | 0C5264 | PARETE DESTRA PARASPRUZZI | RIGHT PANEL SPLASHBACK | |
| 3 | 087089DF00 | 0C7605 | RIPIANO GRIGLIA 400mm | WORK TOP GRID 400mm | ELX |
| 3 | 087089DG00 | 0C7606 | RIPIANO GRIGLIA 800mm | WORK TOP GRID 800mm | ELX |
| 3 | 087089FB00 | 0C7607 | RIPIANO GRIGLIA 400mm | WORK TOP GRID 400mm | ZAN, OEM GAS |
| 3 | 087089FD00 | 0C7609 | RIPIANO GRIGLIA 800mm | WORK TOP GRID 800mm | ZAN, OEM |
| 3 | 087089GA00 | 0C7610 | RIPIANO GRIGLIA 400mm | WORK TOP GRID 400mm | ZAN, OEM EL |
| 4 | 0147098070 | * | ADESIVO STRUTTURALE | STRUCTURAL ADHESIVE TAPE | |
| 5 | 0543821900 | 0C2496 | GUARNIZIONE X CRUSCOTTO | GASKET, CONTROL PANEL | |
| 6 | 085589C500 | 0C7592 | CRUSCOTTO GAS 400mm | GAS CONTROL PANEL 400mm | ELX - GAS |
| 6 | 085589C600 | 0C7593 | CRUSCOTTO GAS 800mm | GAS CONTROL PANEL 800mm | ELX - GAS |
| 6 | 085089BM00 | 0C7202 | CRUSCOTTO Elett. 400mm | ELECT. CONTROL PANEL 400mm | ELX - EL |
| 6 | 085089BK00 | 0C7818 | CRUSCOTTO Elett. 800mm | ELECT. CONTROL PANEL 800mm | ELX - EL |
| 6 | 085589CG00 | 0C7594 | CRUSCOTTO GAS 400mm | GAS CONTROL PANEL 400mm | ZAN - GAS |
| 6 | 087089FC00 | 0C7608 | CRUSCOTTO GAS 800mm | GAS CONTROL PANEL 800mm | ZAN - GAS |
| 6 | 085089G800 | 0C7206 | CRUSCOTTO Elett. 400mm | ELECT. CONTROL PANEL 400mm | ZAN - EL |
| 6 | 087089GP00 | 0C7611 | CRUSCOTTO Elett. 800mm | ELECT. CONTROL PANEL 800mm | ZAN - EL |
| 6 | 050389V100 | * | CRUSCOTTO GAS 400mm | GAS CONTROL PANEL 400mm | OEM - GAS |
| 6 | 050389V200 | * | CRUSCOTTO GAS 800mm | GAS CONTROL PANEL 800mm | OEM - GAS |
| 6 | 050389NT00 | 0C8101 | CRUSCOTTO Elett. 400mm | ELECT. CONTROL PANEL 400mm | OEM - EL |
| 6 | 050389NR00 | 0C8100 | CRUSCOTTO Elett. 800mm | ELECT. CONTROL PANEL 800mm | OEM - EL |
| 7 | 085089D500 | 0C7583 | CASSETTO 400mm | DRAWER 400mm | 400 mm |
| 7 | 085089D600 | 0C7584 | CASSETTO DESTRO 800mm | RIGHT SIDE DRAWER 800mm | 800 mm |
| 8 | 0515899B01 | 0C6793 | MANIGLIA CASSETTO | HANDLE, DRAWER | ELX |
| 8 | 050389V000 | 0C7564 | MANIGLIA CASSETTO | HANDLE, DRAWER | ZAN, OEM |
| 9 | 0530R01701 | 0C6891 | SUPPORTO MANIGLIA | HANDLE SUPPORT | ELX |
| 10 | 085089D400 | 0C7582 | CASSETTO SINISTRO 800mm | LEFT SIDE DRAWER 800mm | 800 mm |
| 11 | 0511850G01 | 0C6670 | MANOPOLA | KNOB | ELX |
| 11 | 0548878001 | 0C7180 | MANOPOLA RUBINETTO GAS | KNOB, GAS TAP | ZAN |
| 11 | 0548878201 | 0C7232 | MANOPOLA COMMUTATORE Elett. | KNOB, ELECTRICAL SWITCH | ZAN |
| 11 | 0548865700 | 0C1380 | MANOPOLA RUBINETTO GAS | KNOB, GAS TAP | OEM |
| 11 | 0548865500 | 0A5621 | MANOPOLA COMMUTATORE Elett. | KNOB, ELECTRICAL SWITCH | OEM |
| 12 | 0548876S00 | 0C6671 | GHIERA PER RUBINETTO GAS | KNOB RING, GAS TAP | ELX |
| 12 | 0548877P00 | 0C7626 | GHIERA PER COMMUTATORE EL. | KNOB RING, ELECTRICAL SWITCH | ELX |
| 12 | 0548877X00 | 0C7178 | GHIERA PER RUBINETTO GAS | KNOB RING, GAS TAP | ELX TOWN GAS |
| 12 | 0548879F00 | 0C7243 | GHIERA PER RUBINETTO GAS | KNOB RING, GAS TAP | ZAN, OEM |
| 12 | 0548879Z00 | 0C7430 | GHIERA PER COMMUTATORE EL. | KNOB RING, ELECTRICAL SWITCH | ZAN, OEM |
| 13 | 0218912211 | 069567 | MOLLETTA FISSAGGIO GHIERA | SPRING, KNOB RING | |
| 14 | 0548877V00 | 0C7345 | ADATTATORE MANOPOLA | KNOB ADAPTER | ELX - ELECTRIC |
| 15 | 0218912211 | 069567 | MOLLA PER MANOPOLA | SPRING, KNOB | |
| 16 | 0835860001 | 0C0467 | GAMBA | LEG | |
| 17 | 0538841600 | * | SCHIENALE 400mm | REAR SIDE PANEL 400mm | 400 mm |
| 17 | 0538841700 | * | SCHIENALE 800mm | REAR SIDE PANEL 800mm | 800 mm |
| 18 | 0529840503 | 0C0470 | PANNELLO ANTERIORE GAS 400mm | FRONT PANEL GAS 400mm | 400 mm |
| 18 | 0529840604 | 0C0471 | PANNELLO ANTERIORE GAS 800mm | FRONT PANEL GAS 800mm | 800 mm |
| 18 | 083089F900 | * | PANNELLO ANT. Elett.400mm | FRONT PANEL ELECTRIC 400mm | 400 mm |
| 18 | 083089FA00 | * | PANNELLO ANT. Elett.800mm | FRONT PANEL ELECTRIC 800mm | 800 mm |
| 19 | 0831802601 | 0C0474 | RASCHIETTO PER GRIGLIA | SCRAPER | |
| 20 | 0530R01801 | 0C6823 | TAPPO MANIGLIA | HANDLE STOPPER | ELX |
| 21 | 0514885600 | 059299 | MANIGLIA PORTA CASSETTO | HANDLE | ELX |
| 22 | 085089JJ00 | * | FIANCO SINISTRO | LEFT PANEL | ELX |
| 22 | 085089JL00 | * | FIANCO SINISTRO | LEFT PANEL | ZAN |
| 23 | 085089JH00 | * | FIANCO DESTRO | RIGHT PANEL | ELX |
| 23 | 085089JK00 | * | FIANCO DESTRO | RIGHT PANEL | ZAN |

| GRIGLIA GAS ED ELETTRICA E900XP GAS AND ELECTRIC GRILL E900XP | | | | | |
|--|--------------|------------|-------------------------------|-------------------------------|-----------|
| Pos | Factory Code | Spare Code | Descrizione | Description | Ref./Note |
| 24 | 0219293205 | 0C0477 | COPIGLIA | COTTER PIN | |
| 25 | | | | | |
| 26 | 0516860702 | 0C0137 | PIASTRA UNIONE POSTERIORE | JOINTING REAR PLATE | |
| 27 | 541813800 | 0C6171 | GUARNIZIONE IN SILICONE | SILICONE GASKET | |
| 28 | 0527850500 | 0C0156 | PIASTRA FISSAGGIO FIANCHI | SIDE PANELS JOINTING PLATE | |
| 29 | 0533869700 | 0C4053 | TEGOLI RADIANTI PER CASSETTO | RADIANT SHIELDS FOR DRAWER | ELECTRIC |
| 30 | 0513806500 | 0C5402 | CONDUTTURA PILOTA 400mm | PILOT PIPE 400mm | 400 mm |
| 30 | 0517871102 | 0C0481 | CONDUTTURA PILOTA DX 800mm | PILOT PIPE RIGHT SIDE 800mm | 800 mm |
| 31 | 0517871003 | 0C5118 | CONDUTTURA PILOTA SX 800mm | PILOT PIPE LEFT SIDE 800mm | 800 mm |
| 32 | 0806821400 | 0C0483 | RIBALTA 400mm | MANIFOLD 400mm | 400 mm |
| 32 | 0806821501 | 0C0484 | RIBALTA 800mm | MANIFOLD 800mm | 800 mm |
| 33 | 0638883500 | 006514 | CAVETTO ACCENSIONE PIEZO | IGNITION CABLE, PIEZO | |
| 34 | 0214111412 | 050670 | DADO RUBINETTO | NUT, GAS TAP | |
| 35 | 0806821303 | 0C7356 | CONDUTTURA 400mm | GAS PIPE 400mm | 400 mm |
| 35 | 0806821202 | 0C7355 | CONDUTTURA DESTRA 800mm | GAS PIPE RIGHT SIDE 800mm | 800 mm |
| 36 | 0806821102 | 0C7354 | CONDUTTURA SINISTRA 800mm | GAS PIPE LEFT SIDE 800mm | 800 mm |
| 37 | 0215199700 | 052127 | BICONO PILOTA - RUBINETTO GAS | DOUBLE CONE, PILOT - GAS TAP | |
| 38 | 0830897000 | 0C0488 | ELETTRODO; ACCENSIONE | ELECTRODE | |
| 39 | 0830852900 | 052814 | TERMOCOPPIA | THERMOCOUPLE | |
| 40 | 0835875Q01 | 0C6758 | RUBINETTO GAS | GAS TAP | |
| 41 | 0511805801 | 059375 | PORTAUGELLO | NOZZLE HOLDER | |
| 42 | 0214105101 | 020997 | CONTRODADO | LOCK NUT | |
| 43 | 0215088100 | 052062 | BOCCOLA REGOLAZIONE ARIA | BUSH, AIR REGULATION | |
| 44 | 0835857002 | 0C3953 | BRUCIATORE | BURNER | |
| 45 | 0214164400 | 052125 | RACCORDO PILOTA | PIPE FITTING, PILOT | |
| 46 | 0515860200 | 054979 | BICONO RUBINETTO | DOUBLE CONE, GAS TAP | |
| 47 | 0515827401 | 053665 | BICONO PILOTA | DOUBLE CONE, PILOT | |
| 48 | | | | | |
| 49 | 0835829600 | 059251 | ACCENDITORE PIEZO | PIEZOELECTRIC IGNITER | |
| 50 | 0214162000 | 0C0121 | RACCORDO TERMOCOPPIA | PIPE FITTING, THERMOCOUPLE | |
| 51 | 0528820002 | 0C0492 | SUPPORTO PILOTA GRIGLIA | HOLDER FOR PILOT | |
| 52 | 0528864100 | * | PIASTRA PER SUPP. PILOTA | PILOT HOLDER'S PLATE | 400 mm |
| 53 | 0830894900 | 0C0494 | PILOTA | PILOT | |
| 54 | 0806856000 | 0C3946 | TEGOLO RADIANTE 400mm | RADIANT PLATES 400mm | 400 mm |
| 54 | 0806855700 | 0C3945 | TEGOLO RADIANTE 800mm | RADIANT PLATES 800mm | 800 mm |
| 55 | 0528866300 | 0C4056 | SUPPORTO ANT. TEGOLI 400mm | FRONT HOLDER, RAD. PLATE | 400 mm |
| 55 | 0528866500 | 0C4057 | SUPPORTO ANT. TEGOLI 800mm | FRONT HOLDER, RAD. PLATE | 800 mm |
| 56 | 0528866400 | 0C4058 | SUPPORTO POST. TEGOLI 400mm | RERA HOLDER, RAD. PLATE 400mm | 400 mm |
| 56 | 0528866600 | 0C4059 | SUPPORTO POST. TEGOLI 800mm | RERA HOLDER, RAD. PLATE 800mm | 800 mm |
| 60 | 0638865100 | 005370 | RESISTENZA DI DISPERSIONE | LEAKAGE RESISTANCE | |
| 61 | 0617825101 | 0C0495 | RESISTENZA 2500W 400V | HEATING ELEMENT 2500W 400V | |
| 62 | 0639805001 | 059239 | MORSETTIERA | MAIN TERMINAL BLOCK | |
| 63 | 0544802300 | 0C0068 | PRESSACAVO | FIXING CABLE | |
| 64 | 0876800002 | 005010 | LAMPADA SPIA VERDE | PILOT LAMP; GREEN | |
| 65 | 0641803400 | 006649 | COMMUTATORE | SWITCH | |
| 66 | 0446578913 | 052099 | TERMOSTATO | THERMOSTAT | |
| 67 | 0214123600 | 050256 | PERNO COLLEGAMENTO | PIN, JUNCTION | |
| 68 | 0214584201 | 066823 | MOLLA FISSAGGIO BULBO | SPRING, BULB THERMOSTAT | |
| 69 | 0527893500 | 0C4054 | GRIGLIA PROTEZIONE BULBO | GRID, PROTECTION BULB | |