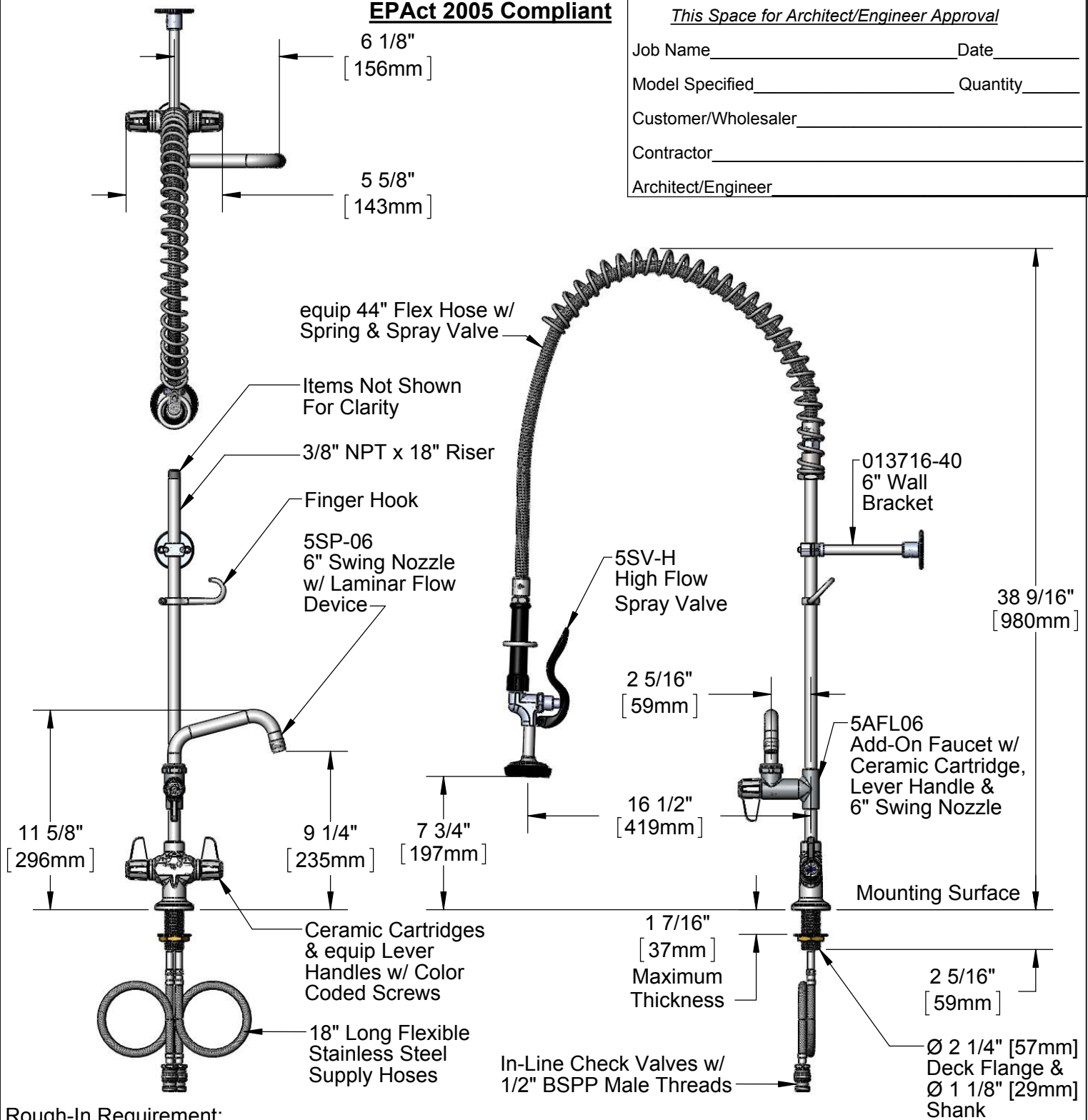


**EPAct 2005 Compliant***This Space for Architect/Engineer Approval*

Job Name \_\_\_\_\_ Date \_\_\_\_\_  
Model Specified \_\_\_\_\_ Quantity \_\_\_\_\_  
Customer/Wholesaler \_\_\_\_\_  
Contractor \_\_\_\_\_  
Architect/Engineer \_\_\_\_\_



Rough-In Requirement:  
Ø 1 1/2" [Ø 38mm] Mounting Hole

Model Number <b>5PR-2S06-H</b>	Date <b>08/08/12</b>	Scale <b>1:8</b>	Drawn <b>DHL</b>	Checked <b>DMH</b>	Approved <b>JHB</b>
-----------------------------------	-------------------------	---------------------	---------------------	-----------------------	------------------------

**Product Specifications:**

**Pre-Rinse Unit: Single Hole Deck Mount Mixing Faucet, Ceramic Cartridges, Add-On Faucet w/ 6" Swing Nozzle, 6" Wall Bracket, 5SV-H High Flow Spray Valve, 1/2" BSPP In-Line Check Valves & Flexible Supply Hoses**

equip Foodservice Accessories  
2 Saddleback Cove, P.O. Box 1088  
Travelers Rest, South Carolina 29690  
Phone: 800.891.4808 Fax: 800.868.0084