



Item # _____

Project _____

Date _____

Twin and Single Mid Line Pump Urns

Pump Type Brewing System

Twin Models 7773, 7776, 77710

Single Models: 7713, 7716, 77110

Electric



Features:

- **Pump Style Brewing Systems**

Water is heated in large water compartment and is sprayed over the grounds by high temperature water pump

- **Durable Construction**

All A.I.S.I. type 304, 18-8 stainless steel

- **Constant Brew Temperature**

Brew temperature varies less than 5°F (3°C) throughout spray over

- **Automatic Coffee Agitation**

Thoroughly mixes brewed coffee immediately after spray over is completed

- **Automatic refill of water compartment**

Water compartment automatically refills and reheats as needed.

- **Low water cutoff System**

Protects heating elements from burn out, at start-up or in operation.

- **Velvet Smooth Spray Arm**

Teflon® coating on spray arm piston prevents liming and insures smooth operation. Positive "stops" on spray arm for operator ease.

Easy to operate:

- **Fully Automatic – Push Button Operation**

Simply load brew basket with coffee, align spray arm over basket lid hole and press brew start button.

- **Adjustable Bypass valve on spray arm**

Enables proper coffee extraction even with variable water conditions

- **Dial Thermometer with color-marked brew zone**

- **Thermostat adjustable from front**

Knob on thermostat has four marked positions: Brew, Hold, Night Standby and Off.

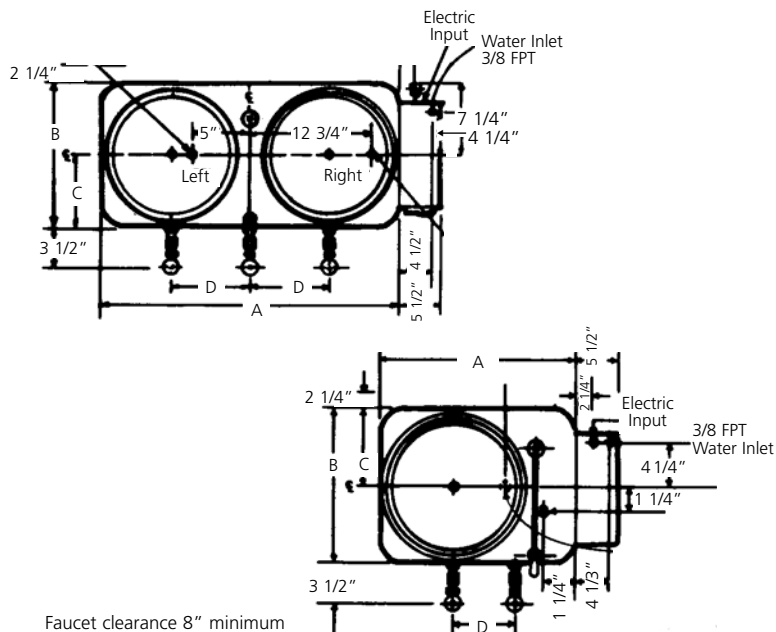
Serviceable

- **Drain valve in bottom**

- **Control drawer with all electronic components is accessible from side**

Mid Line Urn

Pump Type Brewing System



Model Number	A	B	C	D	Work Height	Overall Height
7773	30-1/2"	15-1/4"	7-5/8"	7-3/4"	21-5/8"	27-1/8"
7776	34"	16-3/4"	8-3/8"	8-5/8"	27-5/8"	33-1/8"
77710	34"	16-3/4"	8-3/8"	8-5/8"	27-5/8"	34-5/8"
7713	18"	15-1/4"	7-5/8"	5-1/2"	21-5/8"	27-1/8"
7716	21"	16-3/4"	8-3/8"	7-5/8"	27-5/8"	33-1/8"
77110	21"	16-3/4"	8-3/8"	7-5/8"	27-5/8"	34-5/8"

Brew Basket Selection Chart

Brews	3 Gal.	6 Gal.	10 Gal.	1/2 Batch on 3 Gal.	1/2 Batch on 6 Gal.	1/2 Batch on 10 Gal.
Part No.	BB3	BB6	BB810	BB3-1.5	BB6-3	BB810-6

NOTE: All SS Permanent Filter Brew Basket with SS woven wire cloth bottom is available. Filter paper is available from our stock. See price list.

Military Specifications - Marine Modifications

Twin and single automatic urns MIL-U-43263E or latest specification. Available modified for marine (shipboard) use; no spillage of liquid with 15° list in any plane, and other requirements. Contact factory for detailed quotation and data.

Multiple Faucet Options

Opt. DS-1	2C, 1W	Back/Rear, No Gauge
Opt. DS-2	2C, 1W	Back/Rear, with Gauges
Opt. DS-3L	2C, 1W	Back/Rear, No Gauges, w/ selecta-flow

Fast Fill Options

Opt. 56	Jug Fill Funnel and Chain (18" long)
Opt. 57	Gravity Jug Fill Hose Assembly (6' long)

Model No.	Twin			Single		
	7773	7776	77710	7713	7716	77110
Coffee Capacity (each liner)	3 gal.	6 gal.	10 gal.	3 gal.	6 gal.	10 gal.
Maximum Gallons/Hour*	25	32	42	14	32	42
Number of 5 oz. Cups/Hour	625	800	1050	450	800	1050

* Based on spraying over amount of water equal to capacity of liner.

Electric Heat

Specify electric service desired. Standard is dual voltage 120/240V or 120/208V single phase 3 wire (neutral wire required). Watts and amps as shown.

Note: A ground wire must be provided in addition to wire service shown.

All service includes terminal block hook-up.

						240 Volt		120/208 Volt		480 Volt	
	120/240 Volt		120/208 Volt			3-Phase	3 Wire	3-Phase	4 Wire	3-Phase	3 Wire
	1-Phase	3 Wire	1-Phase	3 Wire		Specify Opt. 21B		Specify Opt. 21A		Specify Opt. 21C	
Model	KW	Amps	KW	Amps	Model	KW	Amps	KW	Amps	KW	Amps
7773	7	29	5.5	25	7773	10.5†	25	8	22	12	14
7776	11.5	48	8.5	41	7776	10.5†	25	8	22	12	14
77710	15	63	11.5	54	77710	15*‡	36	11.5*	31	12	14
7713	7	29	5.5	25	7713	10.5†	25	8	22	12	14
7716	11.5	48	8.5	41	7716	10.5†	25	8	22	12	14
77110	15	63	11.5	54	77110	15*‡	36	11.5*	31	12	14

* No extra charge

Or Opt. 2200P step down transformer.

† Separate 3 wire 120V cord and plug for control circuit.



GRINDMASTER™

CORPORATION

Grindmaster® Coffee Grinders and Brewers • PrecisionBrew™ Brewing Systems • Espresso® Espresso Machines
Crathco® Hot Beverage Dispensers • Crathco® Cold and Frozen Beverage Dispensers • AMW Coffee and Tea Systems
Tel (502) 425-4776 • Fax (502) 425-4664 • 1-800-695-4500 (USA & Canada only)

P.O. Box 35020 • Louisville, KY 40232 • USA

© Grindmaster Corporation, 1995
PRINTED IN USA

www.grindmaster.com • email: info@grindmaster.com

0807 Form # AM-919-02