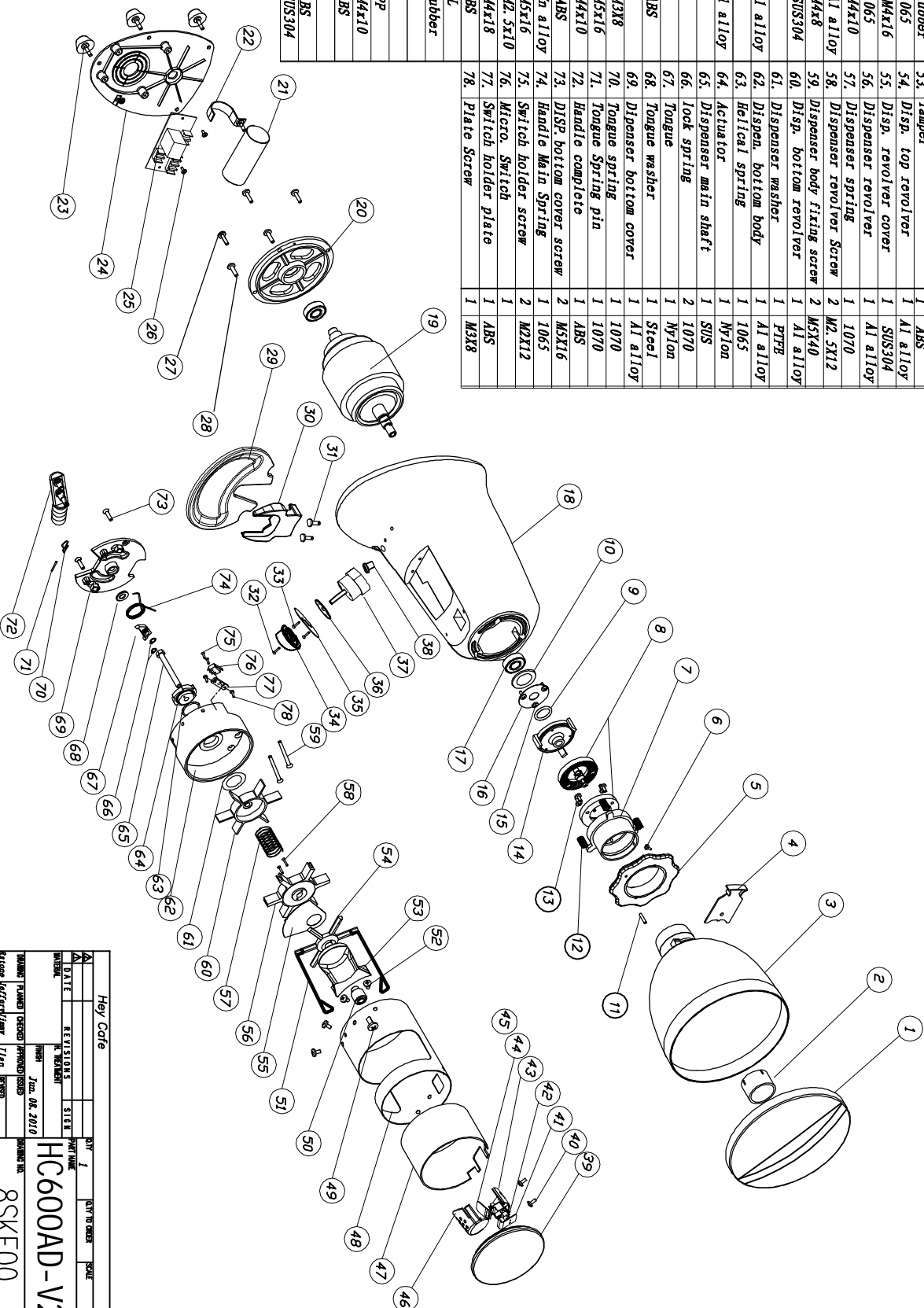


No.	Name	Qty.	Material	No.	Name	Qty.	Material
1.	Beans hopper lid	1	PP	45.	Safety cover	1	ABS
2.	Beans hopper ring	1	ABS	46.	Dispenser window	1	ABS
3.	Beans hopper door	1	ABS	47.	Dispenser housing	1	ABS
4.	Beanshopper door	1	ABS	48.	Dispenser housing	1	SUS304
5.	Dial	1	Zink	49.	Adjuster stopper	1	M5x10
6.	Hopper fixing Screw	1	M4X10	50.	Portions adjuster	1	Al alloy
7.	Top holder	1	Al alloy	51.	Wiper	2	Steel
8.	Grindstone	2	HSS	52.	Dispenser screw set	4	SUS304
9.	O ring	1	Rubber	53.	Tamper	1	ABS
10.	Helical Spring 1MM	1	1065	54.	Disp. top revolver	1	Al alloy
11.	Dial stopper SCREW	1	M4x16	55.	Disp. revolver cover	1	SUS304
12.	Dial Spring	3	1065	56.	Dispenser revolver	1	Al alloy
13.	Grindstone Screw	6	M4x10	57.	Dispenser spring	1	1070
14.	Bottom holder	1	Al alloy	58.	Dispenser revolver Screw	2	M2, 5X12
15.	Dust cover Screw	3	M4x8	59.	Dispenser body fixing screw	2	M5X40
16.	Shaft Dust cover	1	SUS304	60.	Disp. bottom revolver	1	Al alloy
17.	Motor bearing	2		61.	Dispenser washer	1	PTFE
18.	Body	1	Al alloy	62.	Dispens. bottom body	1	Al alloy
19.	Motor	1	Al alloy	63.	Helical spring	1	1065
20.	Back flange	1	Al alloy	64.	Actuator	1	Nylon
21.	Capacitor	1		65.	Dispenser main shaft	1	SUS
22.	Capacitor holder set	1		66.	lock spring	2	1070
23.	Leg set	5	ABS	67.	Tongue	1	Nylon
24.	Bottom cover	1	ABS	68.	Tongue washer	1	Steel
25.	NEW PCB4	1	M3X8	69.	Dispenser bottom cover	1	Al alloy
26.	PCBA Screw	2	M5x16	70.	Tongue spring	1	1070
27.	Flange Screw	4	M5x16	71.	Tongue Spring pin	1	M4X10
28.	Grounding screw	1	M4X10	72.	Handle complete	1	ABS
29.	Bottom tray	1	ABS	73.	DISP. bottom cover screw	2	M5X16
30.	Bsp. handle holder	1	Zn alloy	74.	Handle Main Spring	1	1065
31.	Bsp holder Screw	2	M5x16	75.	Switch holder screw	2	M2X12
32.	Knob Screw	1	M2, 5x10	76.	Micro. Switch	1	ABS
33.	Cover Screw	2	M4x18	77.	Switch holder plate	1	ABS
34.	Knob	1	ABS	78.	Plate Screw	1	M3X8
35.	Switch Cover (ON-OFF-START)	1	AL				
36.	Switch washer	1	Rubber				
37.	Main Switch	1					
38.	Signal Lamp set	1	PP				
39.	Dispenser lid	2	M4x10				
40.	Screw of outlet housing	1	ABS				
41.	Cover	1	ABS				
42.	Micro. Switch	1					
43.	Powder outlet housing	1	ABS				
44.	Switch stop plate	1	SUS304				



Hey Cafe				REV 1	QTY TO ORDER	SCALE
DATE	REVISION	DATE	BY	DATE	BY	DATE
2018.08.08	1	2018.08.08	1	2018.08.08	1	2018.08.08
HC600AD-V2				8SKF00.		