



INSTRUCTION MANUAL

GSB12 Soup Warmer



Operating Instructions

Model No: GSB-12

Specification:

Capacity: 11 Quart

Voltage: 120/220V

Wattage: 400W

Weight: 10 lbs / 4.5 Kgs

Dimension: 14in High x 14in Dia.

36cm High x 34.5cm Dia.



CAUTION: Read the instructions before using the appliance.

► This appliance is suitable for commercial use.

► Do not disconnect the appliance with wet hands and do not pull the supply cord.

► Only replace the supply cord with the type specified in the instructions. Contact the manufacturer, service agent or similar qualified person for further advice.

CAUTION: If foam or liquid escapes from the appliance, switch off immediately.

Operating and Maintenance:

► Plug unit into correct electrical socket.

► Use with WET HEAT ONLY. Add 0.6L of water between the stainless steel liner and internal aluminium container. Never over-fill with water and under no circumstances should the stainless steel liner float up, even when empty. Remove any excess water immediately.

► The temperature control should be set between 1 and 8 and care should be taken to always operate the kettle at the lowest setting possible to maintain correct serving temperature. Settings between 8 and 12 are for initial heat up and the unit should be returned to 8 or below when the correct temperature has been achieved.

► A neon light will glow when the unit is turned on. Turn the dial to 0 to switch off. Unplug from the wall socket to isolate kettle from the electrical supply.

► Always keep the removable hinged lid attached and in the closed position when not serving.

Operating and Maintenance (continued):

► Never move or carry the kettle when unit is switched on or contains hot food.

► Spilled food should be removed immediately from all exterior surfaces. The stainless steel bain-marie and lid are machine washable. The painted exterior and top collar should be wiped over with a damp, soapy cloth.

► Ensure unit is unplugged when not in use, when filling, and when being cleaned.

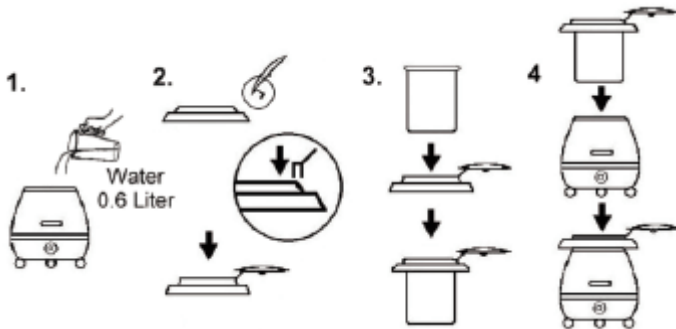
► The kettle must not be cleaned with a high-pressure jet.

WARNING! NEVER IMMERSE KETTLE IN WATER.



WARNING! THIS APPLIANCE MUST BE GROUNDED.

CAUTION: DO NOT OPERATE KETTLE WHILE EMPTY.



Contact Us:

FOR WARRANTY, SERVICE OR PARTS, PLEASE CONTACT:
Asbury Service Warranty & Parts
Toll Free: 1.877.368.2797

Or visit:

www.asburyfoodservice.com



**Read & Keep
these instructions**



Indoor use only



Do not discard



Fort Lauderdale, FL 33331, U.S.A.

Phone:(877) 368-2797 · Fax:(954) 202-7337