



COMMERCIAL MIXERS



MODEL:GEM130

INSTRUCTION MANUAL

ASBURY
FOODSERVICE

3355 Enterprise Avenue, Suite 160
Fort Lauderdale, Florida 33331
Tel: 954.202.7419 Fax: 954.202.7337
www.asburyfoodservice.com

PLEASE READ THESE INSTRUCTIONS CAREFULLY BEFORE USING YOUR MIXER

GEW130 Food Mixer Operation Instruction



Index

1、 Preface	1
2、 Technical parameters	2
3、 Notes And Remarks	2
4、 Maintenances	3
5、 Problems and solutions	3
6、 exploded assembly drawing	4
7、 electrical diagram	5
8、 list of part number	6

1. Preface

GEW130 Food Mixer is designed with the advanced technology incorporated from abroad. The mixer uses a totally enclosed gear drive and has many advantages, such as uniform mixing, easy operation, flexible speed change, low noises, energy saving and high efficiency. The mixers are absolutely necessary equipments for cake making and food processing, and also are ideal implements for material mixing in pharmaceutical and chemical production and other industries.

2. Technical Parameters

Bowl Volume (L)	Power		Nominal Power (KW)	Weight (Kg)	Speed of Stirring Shaft (r/min)			Overall Dimensions (mm)
	Voltage (V)	Frequency (Hz)			1 st	2 nd	3 rd	
30	110	60	1.5	180	110	201	342	700 × 620 × 1200

3. Notes And Remarks

Check the power voltage and see if it is the same as that marked on the label, and if the ground wire is in good condition.

After starting, check and see if steering conforms to the steering indicator. If not, or any other unusual noises, shut down the mixer immediately and exchange two power lines of the three-phase power supply.

When speed change being made, lower the bowl to the lowest position to relieve the mixer of loads, and lift the bowl to working position after it is in normal operation.

Choices of stirrers and stirring speed

- a. Hook stirrer. Used for kneading dough of rated quantities flour and more sticky liquid food. 47%--50% water of the flour will be added. 1st speed (low speed) is proper.
- b. Beater Stirrer. Used for stirring of stuffing. 2nd speed (medium speed) is proper.
- c. Wire whip stirrer. Used for stirring of liquid food, such as, cream, eggs,

etc. 3rd speed (high speed) is proper.

***** Warning: Do not use medium or high speed for kneading dough.**

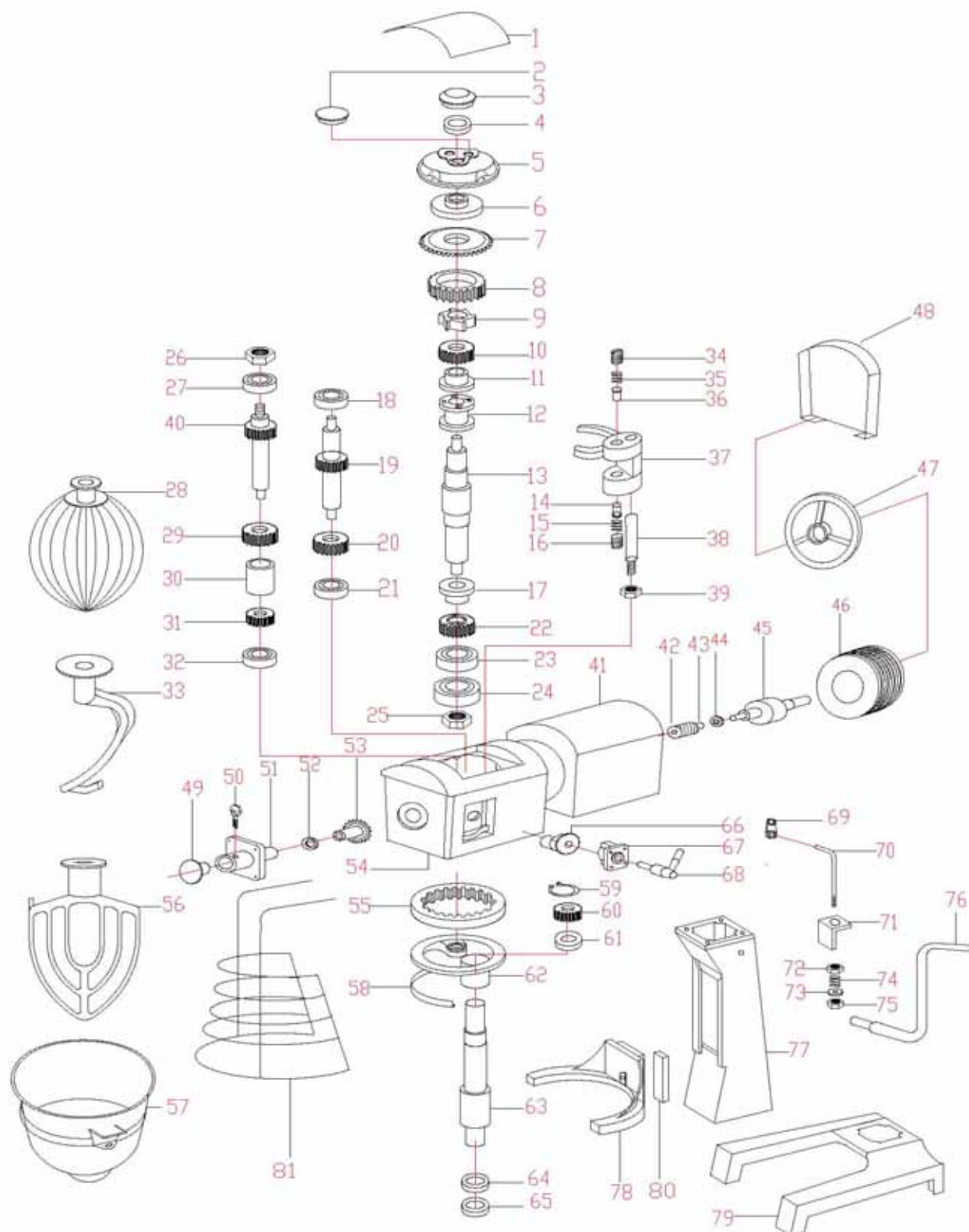
4. Maintenances

- a. After using, you should clean the bowl and agitator ect, make sure to keep the machine clean.
- b. The transmission gear box is packed with special grease, it could be used for six mouths in normal condition. If it need to add or replace the grease, please open the top cover ,then pour the grease from aperture or replace the grease directly.

5.Problems and solutions

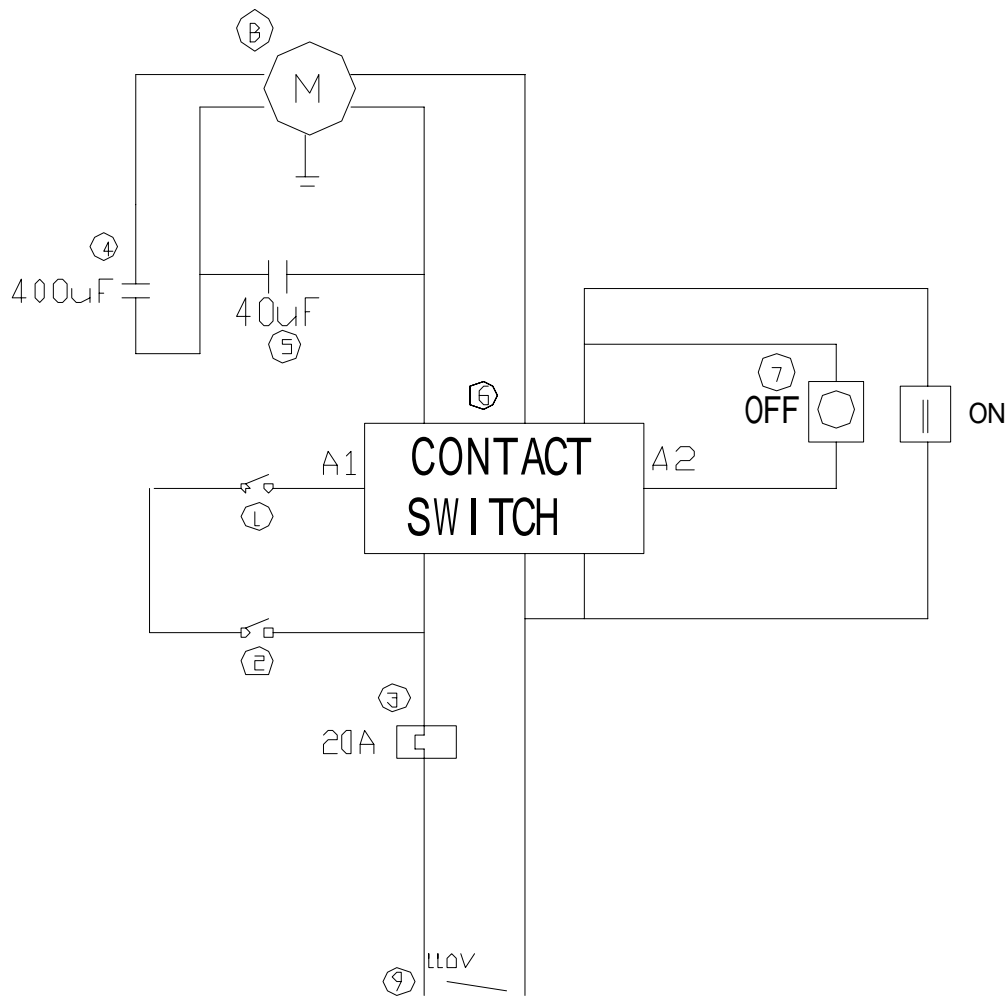
Problems	Causes	Solutions
The mixing shaft doesn't rotate after starting the machine	Electric connectors are loose	Check the electric circuit, tighten those loose connects
Oil leakage	The oil seals are worn out	Replace those oil seals
The temperature of the motor becomes higher and the rotating speed becomes lower	Too low voltage	Check the power supply
	Over-load	Lessen the quantity of the mixture
	The speed of mixing is too high or the mixing is not suitable	Select a suitable speed and mixing
The mixing knocks with the bowl	The mixing or the bowl is deformed	repair or replace the mixing or bowl
The noise of the gearbox is serious, its temperature is too high	Lubrication is insufficient	Add or replace the grease

6. exploded assembly drawing



SM-30 mixer parts drawing

7. electrical diagram



- 1.DISTANCE SWITCH
- 2.DISTANCE SWITCH
- 3.OVER LOADING SWITCH
- 4.CAPACITANCE
- 5.CAPACITANCE
- 6.CONTACT SWITCH
- 7.RED AND GREEN SWITCH
- 8.MOTOR
- 9.PLUG LINE

8. list of part number

Date 2005-1-1

#	Part #	Description		#	Part #	Description	
1	SM300-01-09	cover		41	SM300-01-04	case	
2	外购件	flat valve cap		42	SM300-01-40	worm wheel	
3	SM300-01-14	top batter valve cap		43	standard part	pin	
4	203	bearing		44	SM300-01-41	bushing	
5	SM300-01-05	transmission shaft support		45	外购件	motor rotator	
6	SM300-01-16	spacer-lower		46	外购件	motor stator	
7	SM300-01-13	gear		47	SM300-01-03	back bearing suppoter	
8	SM300-01-19-01	gear		48	SM300-01-45	back cover, Motor	
9	SM300-01-19-02	gear		49	SM300-01-24	plug attachment hub	
10	SM300-01-20	gear		50	SM300-01-01	plug	
11	SM20-01-21	bushing		51	SM300-01-23	attachment hub	
12	SM300-01-25	sleeve		52	SM20-01-26	ring	
13	SM300-01-17	main shaft		53	SM300-01-22	gear	
14	standard part	retainer-spring(shift er yoke)		54	SM300-01-18	handpiece	
15	外购件	spring		55	SM300-01-30	internal gear	
16	standard part	pin		56	SM300-09-03	Flat Beater	
17	SM300-01-27	bushing		57	SM300-08-00	bowl	
18	standard part	bearing		58	SM300-01-32	hood ring	
19	SM300-01-06	shaft worm gear		59	Spring-59	spring	
20	SM300-01-10	gear		60	SM300-01-31	planet	
21	standard part	bearing		61	standard part	bearing	
22	SM300-01-26	gear		62	SM300-01-33	operating shelf	
23	standard part	bearing		63	SM300-01-34	working shaft	
24	seal-24	#24, oil seal		64	standard part	bearing	
25	standard part	nut		65	seal-65	#65, oil seal	
26	standard part	nut		66	SM20-01-39-01	cam-gear shifter	
27	standard part	bearing		67	SM20-01-39-02	plate-shifter index	
28	SM300-09-01	Wire Whip		68	SM300-01-02	handle-shifter	
29	SM300-01-11	gear		69	SM300-06-11	crank lever	
30	SM300-01-38	bushing		70	SM300-06-10	connecting rod	
31	SM300-01-35	gear		71	SM300-06-09	angle iron	
32	standard part	bearing		72	standard part	nut	
33	SM300-09-02	hook		73	standard part	ring	
34	standard part	pin		74	外购件	spring	
35	外购件	spring		75	standard part	nut	
36	standard part	retainer-spring(shift er yoke)		76	SM300-06-12	handle-shifter	
37	SM300-01-42	shifting yoke		77	SM300-06-01	stud	
38	SM300-01-43	declutch shift shaft		78	SM300-06-05	support	
39	standard part	nut		79	SM300-06-06	base	
40	SM300-01-12	gear shaft		80	SM300-06-07	slide squeeze head	
				81	SM300-03-01-00	Safety guard	

				82	SM300-06-02ZZ	Bowl locker, left	
				83	SM300-06-02ZY	Bowl locker, right	
				84		Back cover, electrical	
				85	SM30-02	rubber stoppers	
				86	SM30-01-18-03	Roller	
				87	SM30-01-18-04	Spring piece	
				88	6×25GB1096	Pin	
			electric al	101(1\2 \3)	SM20-DQ-01	Distance switch	
				102(9)	SM30-DQ-02	Power cord	
				103(6)	SM30-DQ-03	Contact switch	
				104(7)	SM30-DQ-04	Green button	
				105(7)	SM30-DQ-05	Red button	
				106(3)	SM30-DQ-06	Overload switch	
				107(4)	SM30-DQ-07	Capacitor 400 uf	
				108(5)	SM20-DQ-08	Capacitor 40 uf	