

EXPLODED VIEW

GRINDER DOSER MAJOR

ESMJDOS 05.00 06/2011

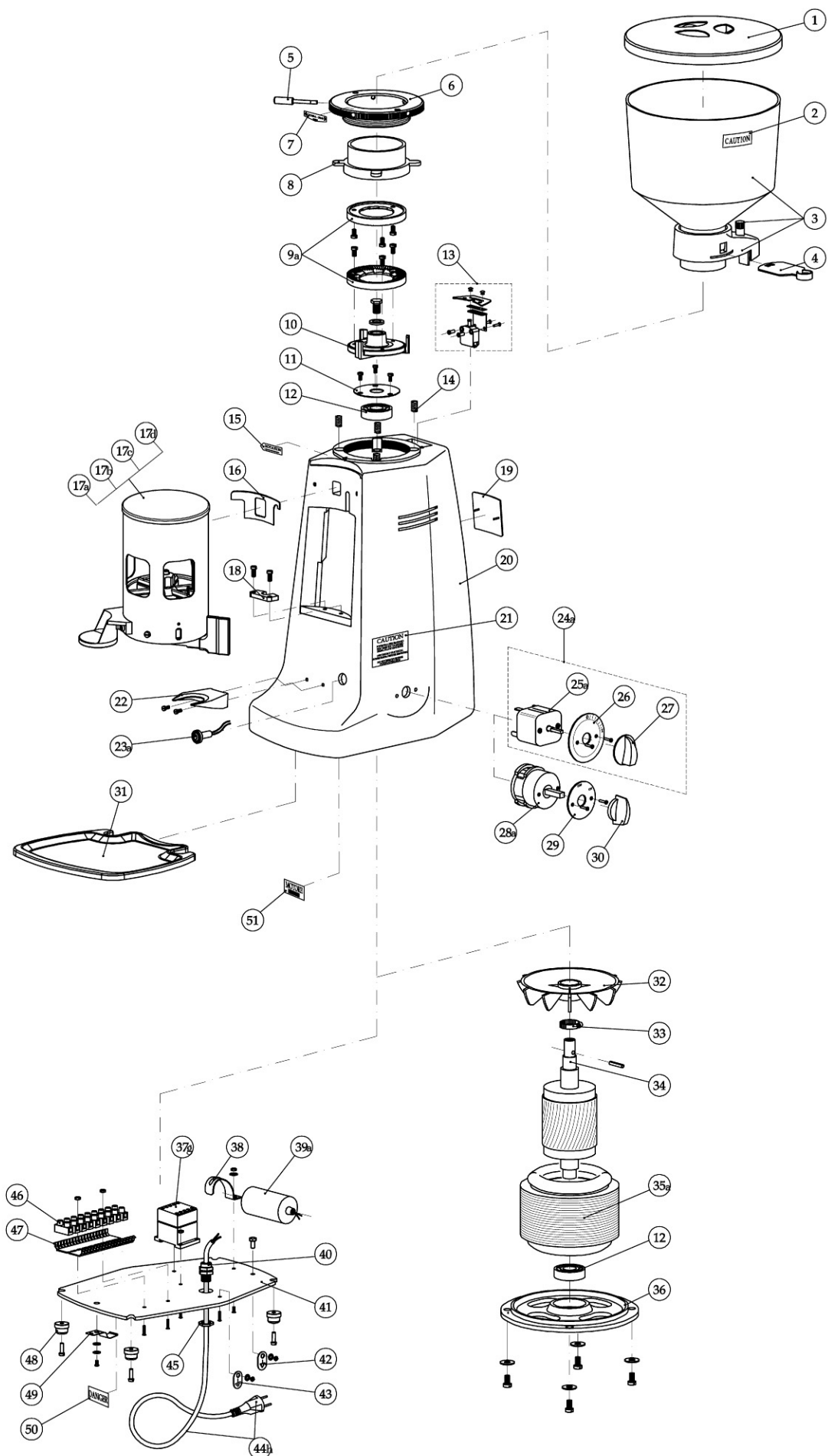


MAZZER LUIGI s.r.l.
VIA MOGLIANESE, 113
30030 GARDIGIANO DI SCORZE' (VE)
ITALIA
TEL. +39 041 5830200 r.a. - FAX +39 041 5830060
E-mail: mazzер@mazzер.com – <http://www.mazzер.com>

N°	DESCRIPTION	CODE	Q.	NOTES
1	Hopper cover	S000COD01	1	
2	Label: "Caution - Hopper"	S000ETA15	1	Vers. 110V / 60Hz single phase 100V / 50-60Hz single phase 220V / 60Hz single phase
3	Complete Robur-Major hopper	S00SCAE03	1	(hopper + collar + pin)
4	Robur-Kony-Major collar locking slide	S000SEB02	1	
5	Grinding adjustment disk handle	SSJSPEA04	1	
6	Major coffee grinding adjustment disk	SMJ0GHA04	1	
7	Label: "coarse-fine/adj.init.position"	S000ETA03	1	
8	Royal-Stark-Major upper grinding blade holder	SRL0POA06	1	
9a	Grinding blade set 151-A	FMA00151A	1	single phase versions
9b	Grinding blade set 151-B	FMA00151B	1	three phase versions
10	Major-Royal lower grinding blade holder	SMJ0POA07	1	
11	Major cover bearing	SMJ0COA02	1	
12	Bearing 6204 DDU CM	S000CUA04	2	
13	Hopper safety switch	S000INR01	1	
14	Grinding adjustment spring	SSJ0MOB14	4	
15	Label: "motor rotation"	S000ETA00	1	
16	Gasket AER Stop	S000GUA01	1	
17a	Major Manual doser	SMJSGRA02	1	Manual/Timer versions
17b	Major Automatic doser	SMJSGRL04	1	Automatic versions
17c	Major ETL Manual doser	SMJSGRE02	1	ETL Manual/Timer versions
17d	Major ETL Automatic doser	SMJSGRE04	1	ETL Automatic versions
18	Doser fixing block (ETL)	S000PIA10	1	Vers. 110V / 60Hz single phase
19	"MAZZER 4M" plate	S000TAA02	1	
20	Major body	SMJ0CAA04	1	
21	"CAUTION" plate	S000TAA20	1	Vers. 110V / 60Hz single phase 100V / 50-60Hz single phase
22	Fork for filterholder rest	S000FOB02	1	
23a	Pilot light 230/400V, green	S000LAA06	1	Vers. 220-240V / 50Hz single phase 220V / 60Hz single phase 230-400V / 50Hz three phase 200V / 50-60Hz three phase
23b	Pilot light 110V UL, red	S000LAA07	1	Vers. 110V / 60Hz single phase 100V / 50-60Hz single phase
24a	Complete two pole time switch	S00STIA02	1	single phase Timer versions
24b	Complete three pole time switch	S00STIA03	1	three phase Timer versions
25a	Two pole time switch	S000TIA02	1	single phase Timer versions
25b	Three pole time switch	S000TIA03	1	three phase Timer versions
26	Time switch plate	S000TAA03	1	Timer versions
27	Time switch knob	S000MAB01	1	Timer versions
28a	Two pole rotative switch	S000INA09	1	single phase Manual versions
28b	Three pole rotative switch	S000INA13	1	three phase Manual versions
28c	Two pole rotative switch with auxiliary phase	S000INA04	1	single phase Automatic versions
28d	Three pole rotative switch with auxiliary phase	S000INA10	1	three phase Automatic versions
29a	Switch plate 0 / I	-	1	Manual versions
29b	Switch plate 0 / I / START	-	1	Automatic versions
30	Rotative switch knob	-	1	
31	Super Jolly-Major-Kony drip tray	SSJ0PIB02	1	
32	Major cooling fan	SMJ0VEA01	1	
33	Fan fixing clamp	S000FAA01	1	
34	Major Rotor	SMJ0ROA02	1	
35a	Major coiled stator 220-240/50/1	SMJSPA01	1	Vers. 220-240V / 50Hz single phase
35b	Major coiled stator 110/60/1	SMJSPAA08	1	Vers. 110V / 60Hz single phase
35c	Major coiled stator 220/60	SMJSPAS01	1	Vers. 220V / 60Hz single phase
35d	Major coiled stator 100/50-60/1	SMJSPA00	1	Vers. 100V / 50-60Hz single phase

N°	DESCRIPTION	CODE	Q.	NOTES
35e	Major coiled stator 230-400/50/3	SMJSPA03	1	Vers. 230V / 50Hz three phase 380-400V / 50Hz three phase
36	Major motor cap	SMJOCAB03	1	
37a	Contactor MC 9.10 230/50 (*)	S000COC02	1	Vers. 220-230V / 50Hz single phase 230V / 50Hz three phase
37b	Contactor MC 9.10 380/50 (*)	S000COC08	1	Vers. 380-400V / 50Hz three phase
37c	Contactor BF16.10 100/50-60	S000COC15	1	Vers. 100V / 50-60Hz single phase
37d	Contactor BF18.10 110/60	S000COC30	1	Vers. 110V / 60Hz single phase
37e	Contactor BG 9.10 220/60	S000COC28	1	Vers. 220V / 60Hz single phase
37f	Contactor BG 9.10 230/50	S000COC18	1	Vers. 220-230V / 50Hz single phase 230V / 50Hz three phase
37g	Contactor 3RT1016 240/50	S000COC26	1	Vers. 240V / 50Hz single phase
37h	Contactor 3RT1016 400/50	S000COC27	1	Vers. 380-400V / 50Hz three phase
38	Capacitor locking clamp D.40	S000GRB05	1	
39a	Capacitor 16µF	S000COE03	1	Vers. 220-240V / 50Hz single phase 240V / 50Hz single phase 220V / 60Hz single phase
39b	Capacitor 60µF UL	S000COE09	1	Vers. 110V / 60Hz single phase 100V / 50-60Hz single phase
40	Cable locking HSK-K PG11 black	S000PAB15	1	
41	Major bottom plate	SMJOPIN02	1	
42	"External unipotential clamp" plate	S000TAA19	1	CE vers.
43	"Ground" plate	S000TAA18	1	
44a	Electric cable "Italy"	S000CAD01	1	
44b	Electric cable "Europe"	S000CAD04	1	
44c	Electric cable "U.S.A."	S000CAD05	1	
44d	Electric cable "Australia"	S000CAD07	1	
44e	Electric cable "Great Britain"	S000CAD08	1	
44f	Electric cable "Israel"	S000CAD10	1	
44g	Electric cable "Switzerland"	S000CAD06	1	
44h	Electric cable "China"	S000CAD16	1	
44i	Electric cable "Argentina"	S000CAD18	1	
44j	Electric cable "Korea"	S000CAD19	1	
44k	Electric cable three phase 230V	S000CAD09	1	
44l	Electric cable three phase 400V	S000CAD03	1	
45	Nut for cable locking	S000DAA02	1	
46	Terminal board	S000MOA04	1	12 poles
47	Under terminal board	S000SOT02	1	12 poles
48	Support leg	S00SPIA01	4	
49	Drip tray locking plate	SSJ0LAM01	1	
50	Label: "Danger"	S000ETA14	1	Vers. 110V / 60Hz single phase 100V / 50-60Hz single phase 220V / 60Hz single phase
51	Motor label	-	1	

(*) = Spare parts for appliances bought before 01st/07/2006 only



N°	DESCRIPTION	CODE	Q.	NOTES
1	Doser cover	S000COD02	1	
2	Cylinder doser for Major-Robur-Royal-Stark	S000CIA03	1	
3	Dose adjustment knob	S000MAB02	1	
4	Upper dosing star for Major	SMJSSTA04	1	
5	Coffee outlet covering section plate	S000SEA01	1	
6	Female dosing star	S000STA03	1	
7	Dosing system pressing spring	S000MOB05	1	
8	Male dosing star	S000STA02	1	
9	Upper microswitch	S00SMIA07	1	Automatic versions
10	Doser pipe	SMJ0TUA04	1	
11a	Coffee pressing device D.53	S000PRA02	1	
11b	Coffee pressing device D.54,5	S000PRA02	1	
11c	Coffee pressing device D.57,5	S000PRA02	1	
12	Lower microswitch star space	S000DIA01	1	
13	Lower microswitch spring	S000MOB06	1	Automatic versions
14	Lower microswitch star	S000STA05	1	Automatic versions
15	Corrugated ring D.32	S000ANA01	1	
16	Ratchet	S000CRA02	1	
17	Doser adjustment screw - M8x70	S000VIA01	1	
18	Doser bottom set	S00SFOA01	1	
19	Dosing lever return spring	S000MOB03	1	
20	Nose spring	S000MOB04	1	
21	Nose	S000NAA01	1	
22	Doser bottom	S000FOA03	1	
23	Dosing lever	S00SLEA02	1	
24	Doser washer D.50 thick. 0,4	S000ROA02	1	
25	Coffee outlet guard	S000PRB02	1	
26	Bush coffee outlet guard	S000VIA04	2	ETL versions
27	Counter	S00SCOB02	1	Automatic versions Manual/Timer versions with counter
28	Lower microswitch	S00SMIA11	1	Automatic versions
29	Label "Danger"	S000ETA14	1	Vers. 110V / 60Hz single phase 100V / 50-60Hz single phase 115-127V / 60Hz single phase 220V / 60Hz single phase
30	Oversized female dosing star	S000STA06	1	
31	Oversized dose adjustment knob	S000MAB03	1	
32	Oversized star with dosing knob	S00SGRA08	1	

