

# EXPLODED VIEWS

## MONROC



## INDEX

<b>1</b>	<b>METAL PANELS</b>	<b>2</b>
<b>2</b>	<b>GENERAL EXPLODED VIEW</b>	<b>4</b>
<b>3</b>	<b>EXPLODED VIEW PART LIST</b>	<b>5</b>
<b>4</b>	<b>WATER – STEAM TAP</b>	<b>6</b>
<b>5</b>	<b>PORTA FILTER</b>	<b>7</b>
<b>6</b>	<b>BREWING GROUP</b>	<b>8</b>
<b>7</b>	<b>FILLING LABYRINTH</b>	<b>9</b>
<b>8</b>	<b>PUMP &amp; MOTOR</b>	<b>10</b>
<b>9</b>	<b>PULSER ELECTRIC SCHEME</b>	<b>11</b>
<b>10</b>	<b>CONTROL ELECTRIC SCHEME</b>	<b>12</b>
<b>11</b>	<b>SPARE PARTS</b>	<b>13</b>

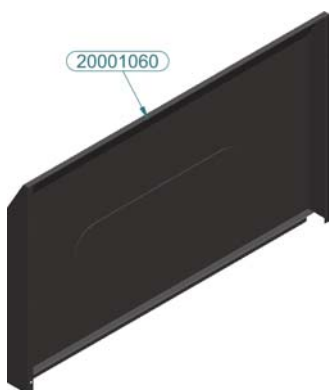
# 1 Metal Panels



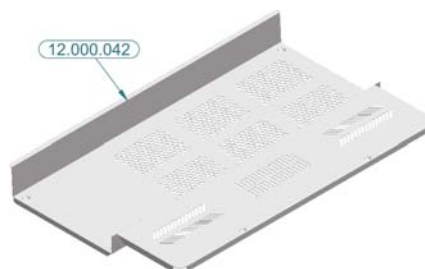
Name	P/N
LEFT SIDE PANEL 2/3/4 GR. BROWN INTER	12.000.090



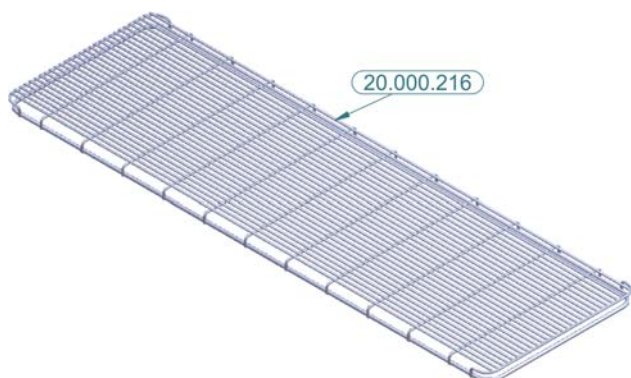
Name	P/N
RIGHT SIDE PANEL 2/3/4 GR. BROWN INTER	12.000.080



Name	P/N
CENTRAL BODYWORK 2GR (BROWN) INTER	20.001.060



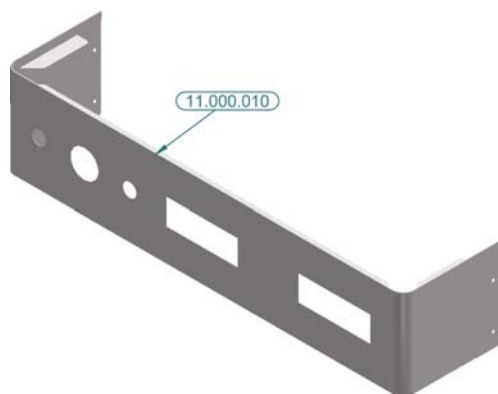
Name	P/N
CUP TRAY 2GR MONROC	12.000.042



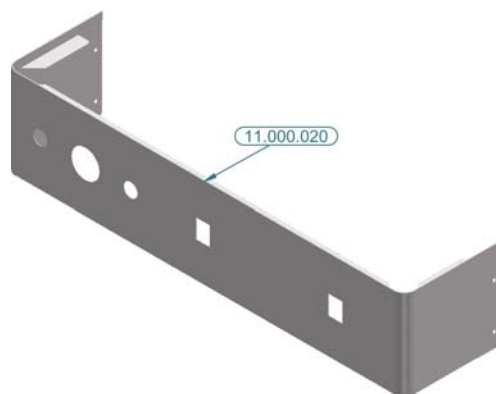
Name	P/N
GRILL FOR 2GR	20.000.216



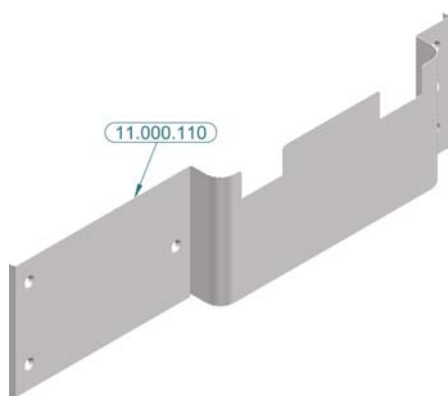
Name	P/N
STAINLESS STEEL DRIP TRAY 2GR	20.000.166



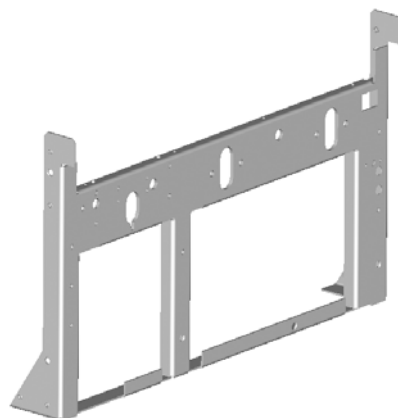
Name	P/N
TOP FRONT PANEL CONTR. MONROC SHINE	11.000.010



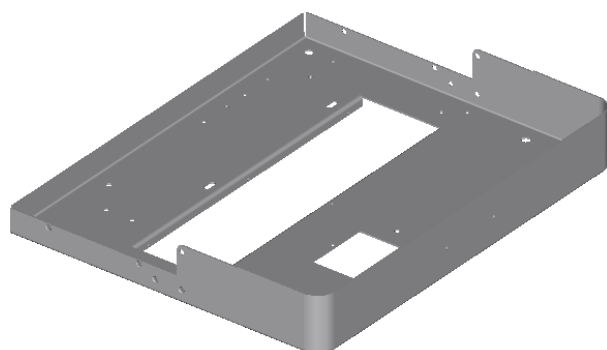
Name	P/N
TOP FRONT PANEL PULSER. MONROC SHINE	11.000.020



Name	P/N
FRONTAL 2GR EC	11.000.110

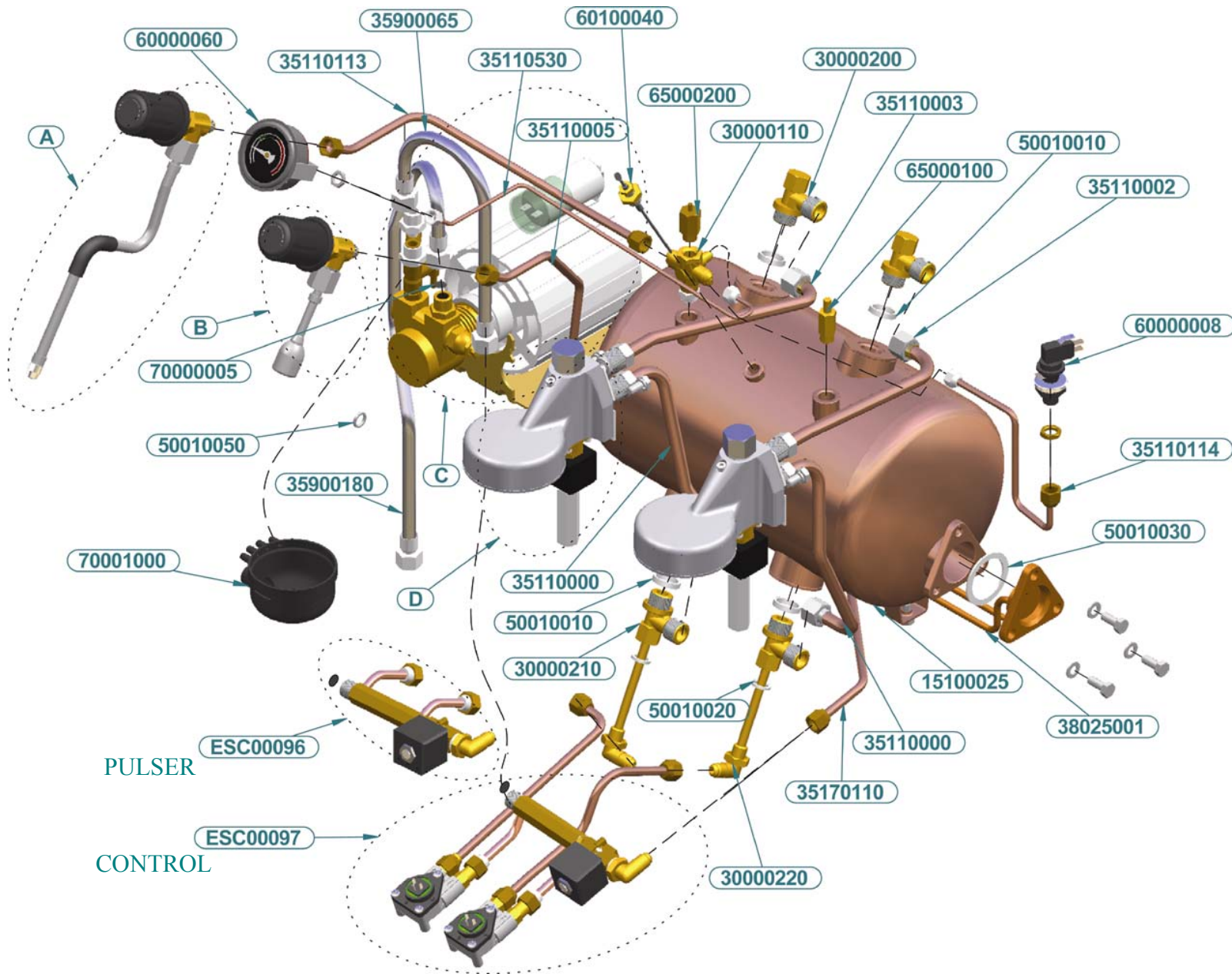


Name	P/N
CHASSIS PANEL 2GR	20.000.015



Name	P/N
BASE CHASSIS 2GR EC BROWN	11.000.100

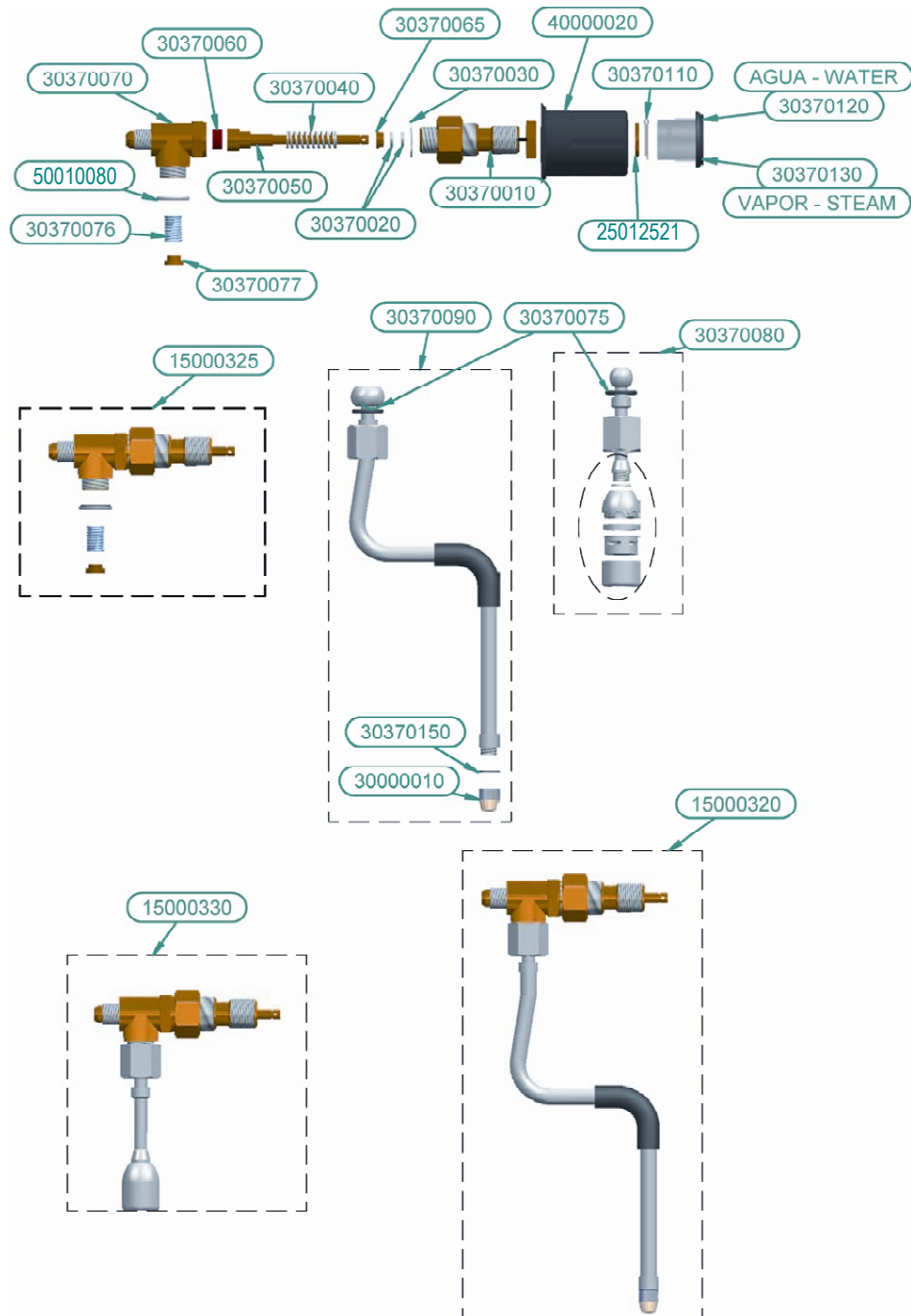
## 2 General Exploded View



### 3 Exploded View Part List

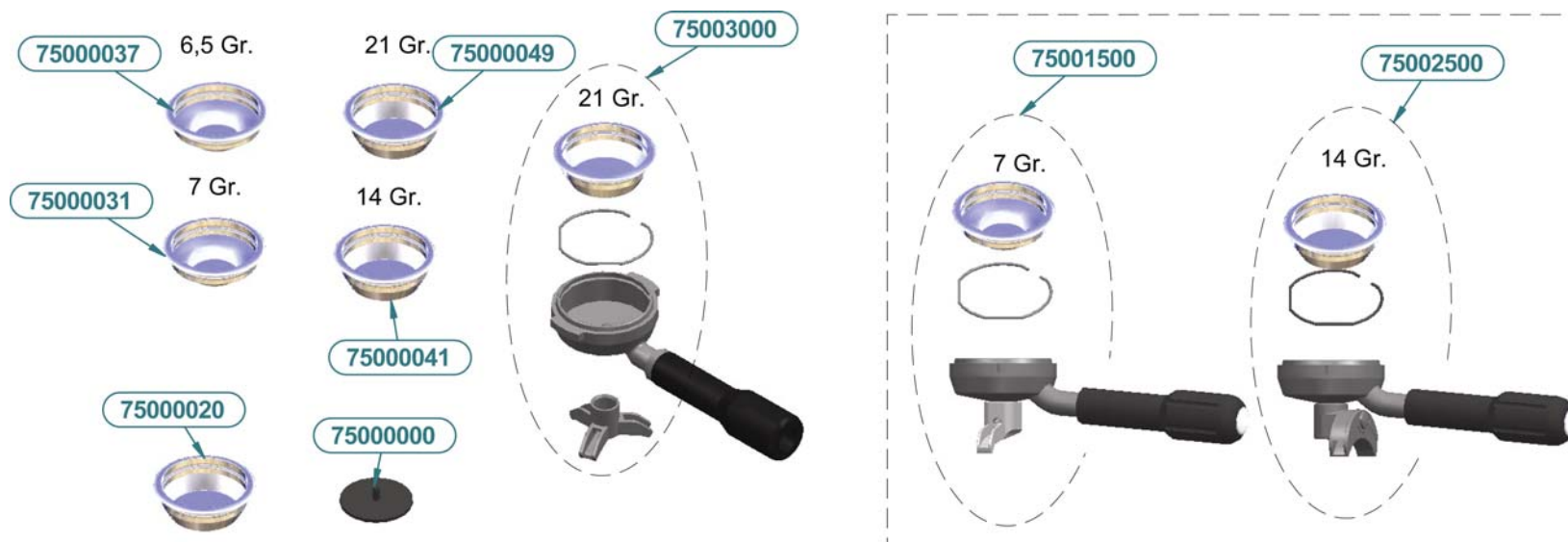
NAME	P/N
HIGH GROUP & MC BOILER 2GR (11LT)	15.100.025
3 TRACKS ADAPTOR ¼* ¼ * 1/8	30.000.110
THERMICS SUP. ADAPTOR ½ * ½	30.000.200
THERMICS INF. ADAPTOR ½ * ½ * ¼	30.000.210
CONE INJECTOR ¼	30.000.220
RIGHT GROUP RETURN TUBE	35.110.000
RIGHT GROUP INLET TUBE	35.110.002
LEFT GROUP RETURN TUBE	35.110.003
WATER TAP TUBE	35.110.005
STEAM FEED TUBE	35.110.113
PRESSOSTAT TUBE	35.110.114
MANOMETER TUBE	35.110.530
WATER TUBE 3-4 GR	35.170.110
FLEXIBLE HOSE 65CM	35.900.065
FLEXIBLE HOSE 180 CM	35.900.180
2500W-240V 6ltrs COPPER ELEMENT	38.025.001
21.1*25.7*1/2 TEFLON GASKET	50.010.010
13.2*18.2*2.5 ¼ TEFLON GASKET	50.010.020
40*52*2 ELEMENT TEFLON GASKET	50.010.030
3/8 BOILER'S CONECTOR TEFLON GASKET	50.010.050
PRESOSTAT CE	60.000.008
D-43 ONE READING MANOMETER	60.000.060
WATER LEVEL PROBE ¼ BRASS	60.100.040
3/8 SAFETY VALVE	65.000.100
NON SUCTION VALVE	65.000.200
ROUND FILTER MESH	70.000.005
DRAIN FILTER	70.001.000
SUBASSEMBLIES	
LABYRINTH E.C. P2G MONROC	ESC00096
LABYRINTH EC/GRIND. CONTROL MONROC	ESC00097
STEAM TAP	A
WATER TAP	B
PUMP & MOTOR	C
EROGATOR GROUP	D
PUMP INLET SILICON TUBE 4-7	35.021.000
L-1.5mtrs WASTE TUBE D-17	35.900.010
FOOT D-50 MOD. CUPS	70.000.045
FLEXIBLE HOSE 65CM	35.900.065

## 4 Water – Steam tap



NAME	P/N	NAME	P/N
COMPLETE MONROC STEAM TAP	15.000.320	STEAM/WATER PIPE ROD	30.370.075
STEAM TAP COMPLETE WITHOUT PIPE	15.000.325	STEAM/WATER PIPE SPRING	30.370.076
COMPLETE WATER TAP	15.000.330	PIPE SPRING SOCKET	30.370.077
STEAM SPOUT	30.000.010	WATER PIPE COMPLETE, CLASSIC MOD.	30.370.080
TAP ADAPTOR	30.370.010	STEAM PIPE COMPLETE, CLASSIC MOD.	30.370.090
ROD GASKET	30.370.020	STAINLESS STEEL KNOB WASHER	25.012.521
METALLOPLASTIC GASKET	30.370.030	WATER/STEAM KNOB PIN	30.370.110
AXIS SPRING	30.370.040	WATER TAP KNOB ANAGRAM	30.370.120
AXIS	30.370.050	STEAM TAP KNOB ANAGRAM	30.370.130
CLOSING PLUG	30.370.060	VAPORIZER TEFLON GASKET	30.370.150
BRASS CAP AXIS PUSH	30.370.065	STEAM/WATER TAP KNOB	40.000.020
TAP BODY	30.370.070	STEAM/WATER PIPE TEFLON GASKET	50.010.080

## 5 Porta Filter



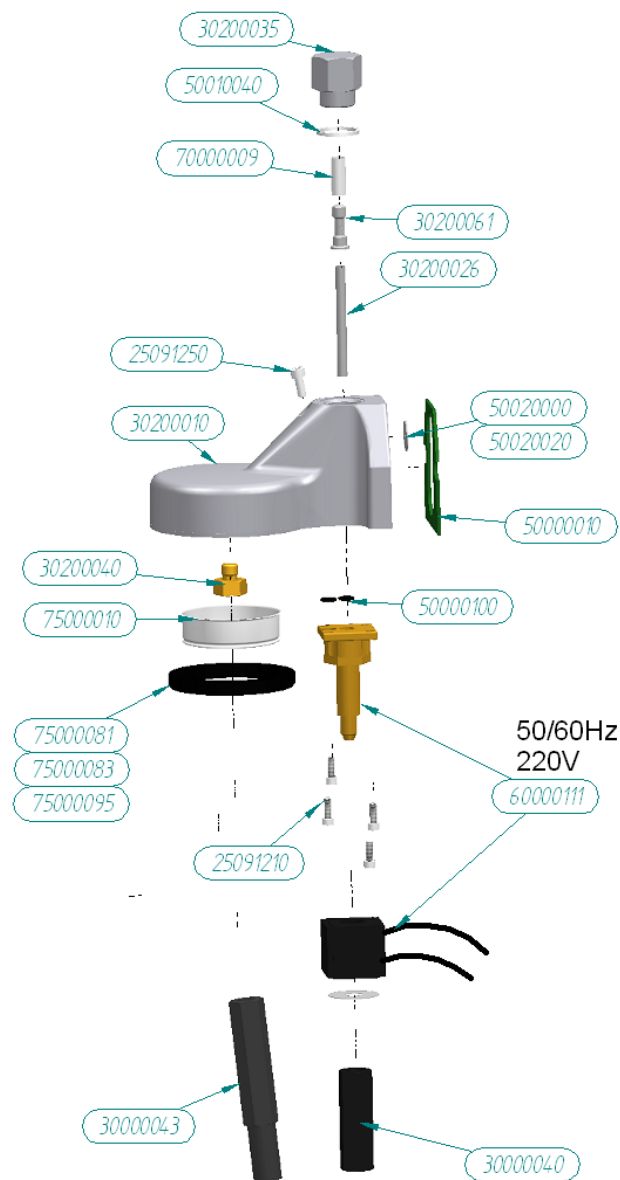
Name	P/N	Name	P/N
BLIND RUBBER FILTER	75.000.000	COMPL. PORTAFILTER 1 CUP	75.001.500
BLIND METAL FILTER	75.000.020	COMPL. PORTAFILTER 2 CUPS Mega-Markus-G10	75.002.500
1 CUP FILTER (7 gr)	75.000.031		
1 CUP FILTER (6.5 gr)	75.000.037		
2 CUP FILTER (14 gr)	75.000.041		
3 CUP FILTER (21 gr)	75.000.049		
COMPL. PORTAFILTER 3 CUPS	75.003.000		



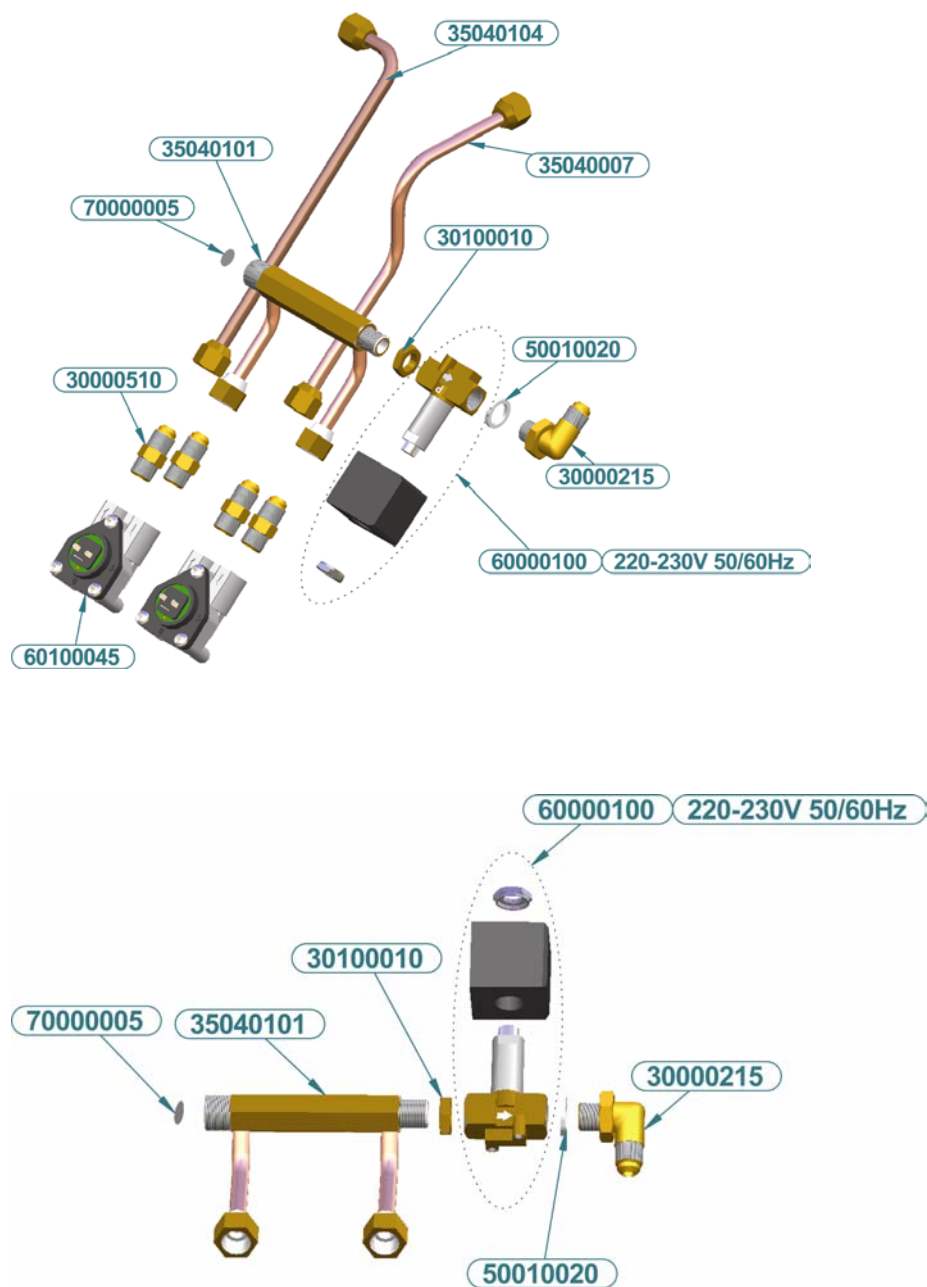
## 6 Brewing Group

COMPLETE GROUP	15.000.050
----------------	------------

NAME	P/N
ALLEN SCREW 4x12 DIN-912	25.091.210
ALLEN SCREW 6x10 DIN-912	25.091.250
BREWING GROUP THREAD	30.000.040
CREM BREWING GROUP BODY	30.200.010
TEFL WATER REDUC. HOLDER 4x6x65	30.200.026
LONG PLUG ½ GROUP	30.200.035
CREM BREWING GROUP DIFFUSER	30.200.040
GROUP TEFLON INJECTOR	30.200.061
GREEN BODY FLAT GROUP JOINT	50.000.010
VITON ELECTROVALVE GASKET	50.000.100
21.7*25.7*2 G/C-G TEFLON GASKET	50.010.040
3.5*18.2*2 TEFLON HOT WATER REDUCTOR	50.020.000
2,5*18,2*2 TEFLON HOT WATER REDUCTOR	50.020.020
ELECTROV. GROUP PARKER 240v (MONROC)	60.000.111
TUBULAR TUBE FILTER	70.000.009
SHOWER	75.000.010
8 mm GROUP HEAD GASKET	75.000.081
8,5 mm GROUP HEAD GASKET	75.000.083
1 mm. RUBBER SUPPLEMENT	75.000.095

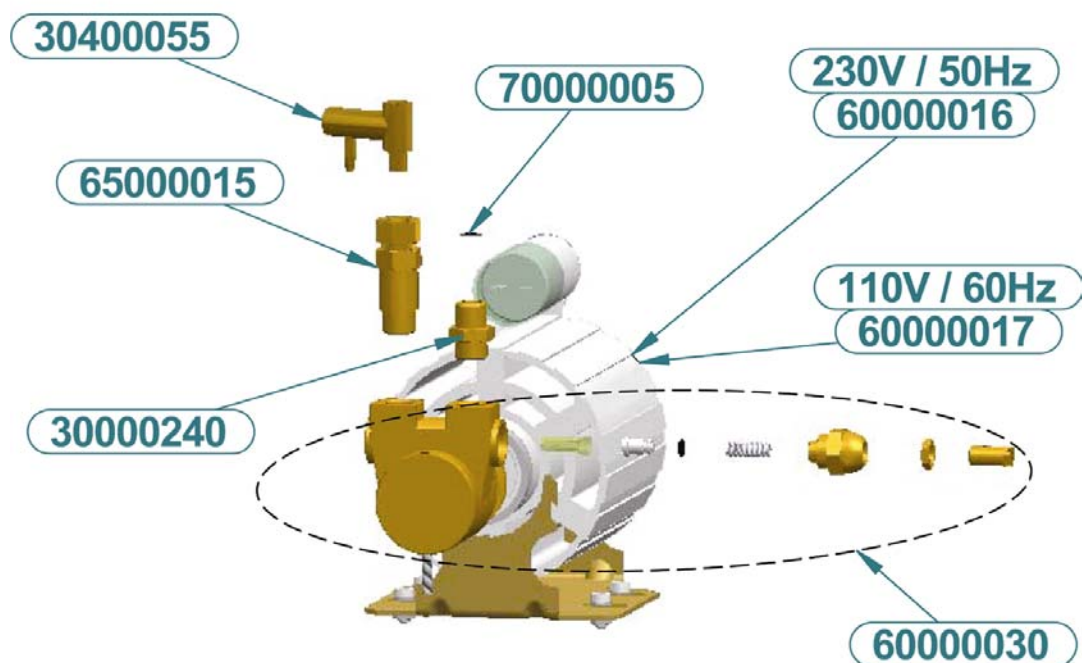


## 7 Filling Labyrinth



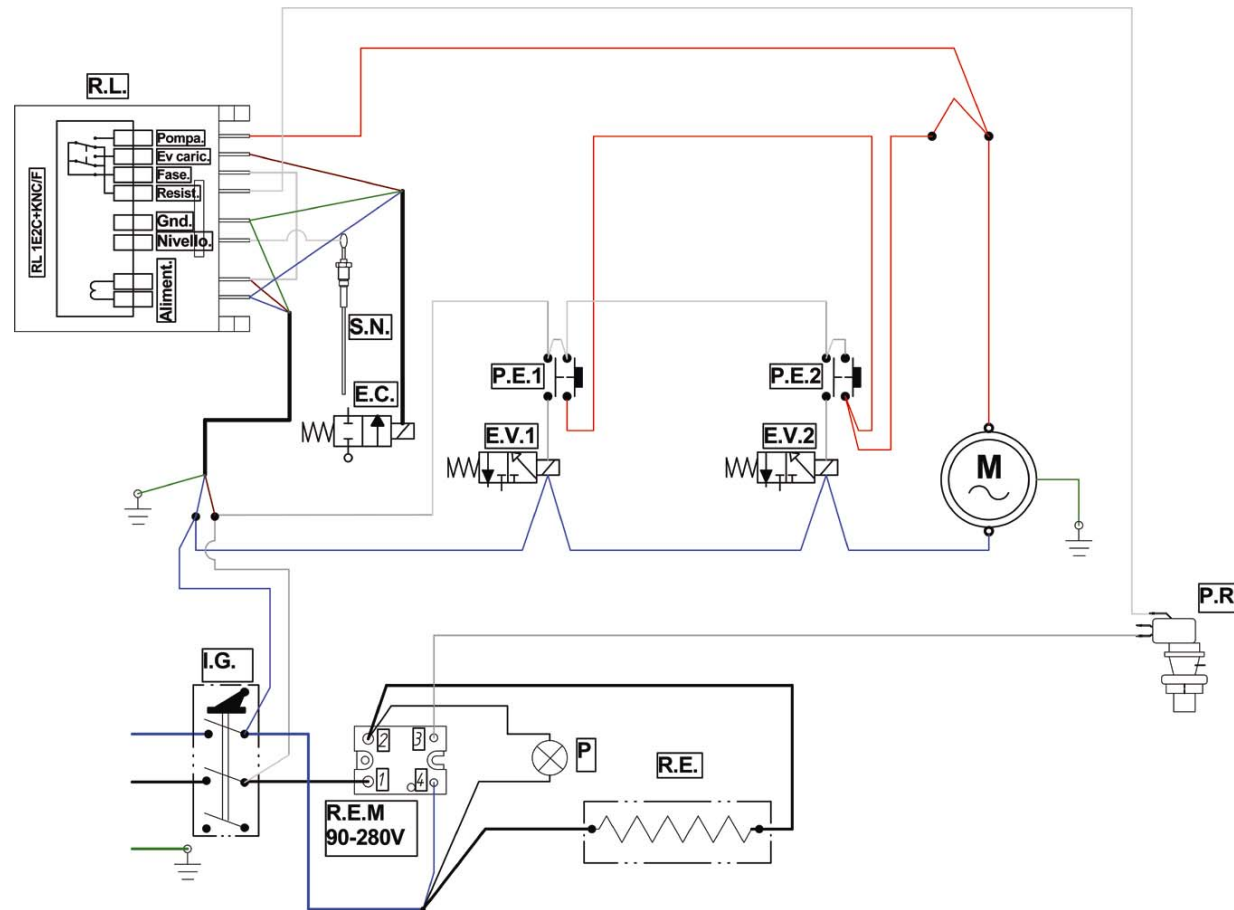
DENOMINACION	P/N
CONICAL BEND ADAPTOR 1/4 * 1/4	30.000.215
CONICAL ADAPTOR 1/4 * 1/4 ELECTRON	30.000.510
HEXAGONAL NUT 1/4 PRESSOSTAT	30.100.010
FLOWMETER OUTLET PIPING	35.040.007
MINI BRASS TUBE FOR BATTERY	35.040.101
VOLUMETRIC TUBE LABYRINTH MC	35.040.104
13.2*18.2*2.5 1/4 TEFLON GASKET	50.010.020
ELECTROVALVE 1/4 PARKER 220V	60.000.100
FLOWMETER UL/NETW. BRASS TEF+LED	60.100.045
ROUND FILTER MESH	70.000.005

## 8 PUMP & MOTOR



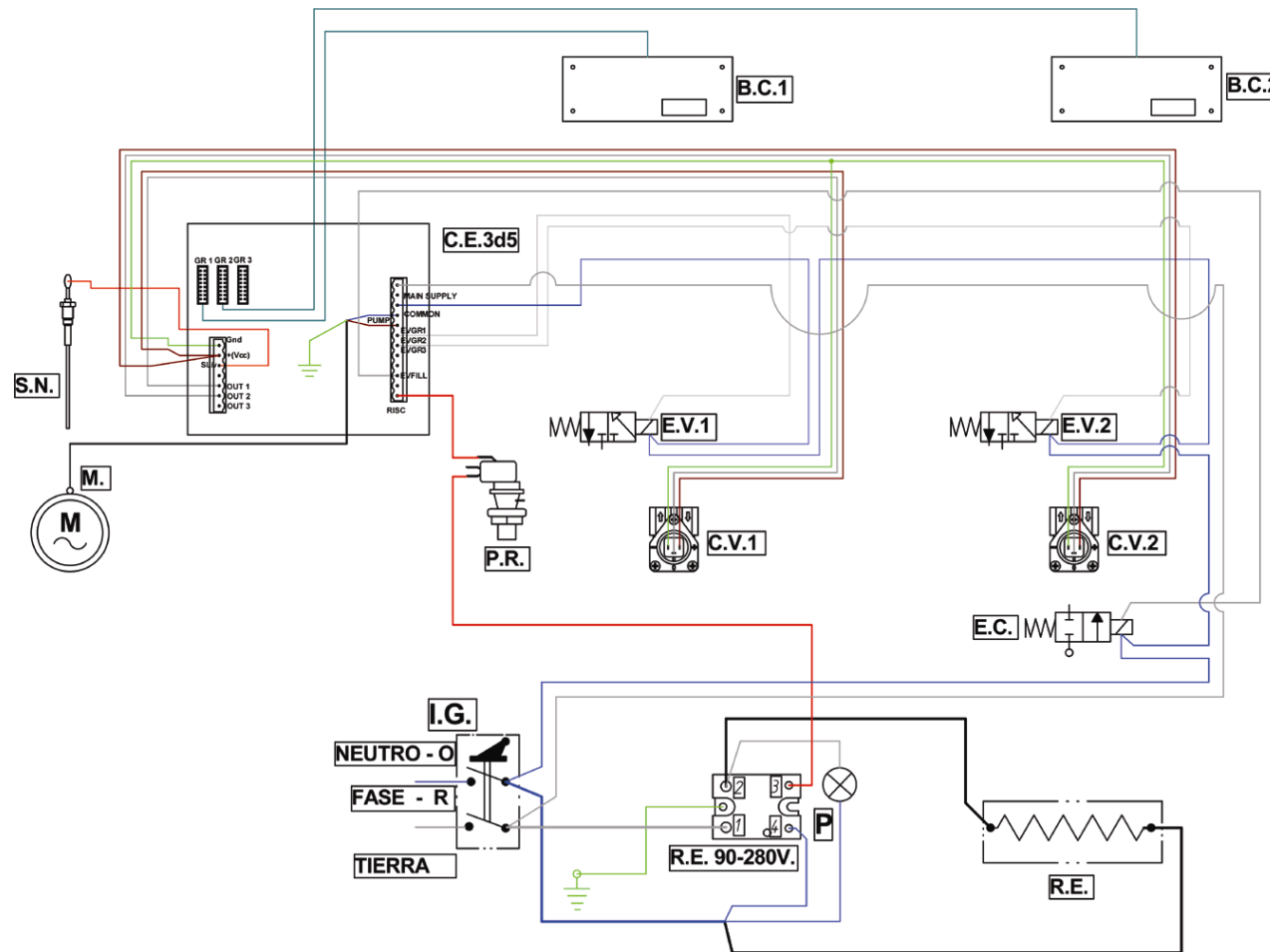
DENOMINACIÓN	P/N
PUMP ADAPTOR 3/8 x 3/8	30.000.240
PUMP BYPASS CONDOR	30.400.055
MOTOR CREM 230V / 50Hz	60.000.016
MOTOR CREM 110 / 60Hz	60.000.017
PUMP (Crem Special Treatment)	60.000.030
RETENTION VALVE 3/8*1/8	65.000.015
ROUND FILTER MESH	70.000.005

## 9 PULSER ELECTRIC SCHEME



REF.	NAME	P/N	REF.	DENOMINACIÓN	P/N
R.L.	SR 240V. LEVEL REGULATOR	60.100.101	M	PUMP & MOTOR	
P.E.	BLACK PUSH BUTTON	60.900.043	R.E.	HEATING ELEMENT	38.025.001
E.C.	ELECTROV. ¼ PARKER 220V	60.000.100	P	PILOT LIGHT	60.901.001
E.V.	ELECTROV. GROUP PARKER 240V	60.000.111	S.N.	WATER LEVEL PROBE	60.100.040
I.G.	RED LIGHT SQUARE SWITCH	60.900.035	R.E. 90-280V	STATIC RELAY 90-280	60.800.100
P.R.	PRESSOSTAT CE	60.000.008			

# 10 CONTROL ELECTRIC SCHEME



REF.	NAME	P/N	REF.	NAME	P/N
C.V.	FLOWMETER UL/NETW. BRASS	60.100.045	M	PUMP & MOTOR	
E.C.	ELECTROV. ¼ PARKER 220V	60.000.100	R.E.	HEATING ELEMENT	38.025.001
E.V.	ELECTROV. GROUP PARKER 240V	60.000.111	P	PILOT LIGHT	60.901.001
I.L.	RED LIGHT SQUARE SWITCH	60.900.035	S.N.	WATER LEVEL PROBE	60.100.040
B.M.	TOUCHPAD	60.100.300	C.M	SWITCHBOARD 3d5 XLC	60.100.410
P.R.	PRESSOSTAT CE	60.000.008	R.E. 90-280V	STATIC RELAY 90-280	60.800.100

11 SPARE PARTS



Name	P/N
SWITCHBOARD 3D5 XLC	60.100.410



Name	P/N
TOUCHPAD G-10	60.100.300



Name	P/N
SUPPORT SWITCHBOARD 3D5	20.010.001



Name	P/N
SR 240V. LEVEL REGULATOR	60.100.101



Name	P/N
RELAY PROTECTION BOX	60.800.103



Name	P/N
STATIC RELAY 90-280V	60.800.100



Name	P/N
PILOT LIGHT 55 cm	60.901.001



Name	P/N
INOX GROUND WASHER	25.000.003
WATER LEVEL PROBE 1/4 BRASS	60.100.040



Name	P/N
L.600 mm MONROC TOUCH PAD WIRE	60.100.038
L.800 mm MONROC TOUCH PAD WIRE	60.100.039

COMPLETE WIRING MONROC PULSER (with Solid State Relay)	45.100.002
COMPLETE WIRING MONROC CONTROL (with Solid State Relay)	45.100.301



Name	P/N
RED LIGHT SQUARE SWITCH	60.900.035



Name	P/N
BLACK PUSH BOTTON	60.900.043



Name	P/N
PRESSOSTAT CE	60.000.008



Name	P/N
FLOWMETER UL/NETW. BRASS TEFL.+LED	60.100.045



Name	P/N
FLOWMETER LID UL BRASS	60.102.040



Name	P/N
FLOWMETER GASKET	60.102.020



Name	P/N
FLOWMETER CATSPAW	60.102.010