

INDEX

1. GENERAL INFORMATION	20
2. TECHNICAL CHARACTERISTICS.....	21
3. WARRANTY.....	22
4. INSTRUCTIONS FOR USE.....	23
4.1 PREPARATION.....	23
4.2 OPERATION.....	24
4.3 CLEANING.....	26
5. DIAGRAMS WITH PARTS AND LIST OF SPARE PARTS.....	28
6. DETECTING FAULTS AND PROBLEMS.....	32
7. DECLARATION OF CONFORMITY.....	33
ANNEX:	
ELECTRICAL DIAGRAMS	82

Zumex reserves the right to modify the information included in this manual with no prior warning.

1. GENERAL INFORMATION

This manual describes the general information for the following models of Zumex:

COUNTERTOP MODELS:



MODELS WITH BASE STAND:



- The specific data of your Zumex juicer (voltage, frequency and other important data) are located on the ID Label, found on the first page of the manual and on the unit.
- Contact your Distributor / Official Technical Support Service for any technical questions you might have, providing the Serial Number shown on the ID Label of the unit.
- Disconnect the unit before carrying out any cleaning or maintenance procedures.
- Zumex adopts all measures required to collect units that are not in operation, guaranteeing the correct environmental management practices. Please, contact your Zumex authorized distributor to discard these units.
- Zumex Marketing Department will address all comments and suggestions you might have about our units or service network. Please contact them directly at this address:

ZUMEX MAQUINAS Y ELEMENTOS, SA
Pgno. Inds. Moncada II. c/ La Closa, 16
46113 Moncada, Valencia, Spain
Tel.: + 34 961 301 251
Fax: + 34 961 301 255
E-mail: marketing@zumex.com

2. TECHNICAL CHARACTERISTICS

MODEL	ZUMEX ESSENTIAL	ZUMEX ESSENTIAL AUTOSTART	ZUMEX VERSATILE and ZUMEX VERSATILE D	ZUMEX VERSATILE PODIUM and ZUMEX VERSATILE D PODIUM
Oranges per minute	14	14	22	22
Dimensions (cm/inches)	47x50x88 18'50"x19'50"x34'65"	47x50x75 18'50"x19'50"x29'14"	47x55x85 18'50"x21'65"x33'46"	49x58x160 19'29"x22'83"x62'99"
Net weight (kg/lb)	45 / 99	45 / 99	54 / 119	80 / 174
Power	280 W for 220-240V 50/60 Hz 320 W for 115 V 60 Hz			
Protection	IPX4			
Acoustic pressure level	Lower than 70 dB (A)			
Safety	Double magnetic safety detector Electronic motor protection			
Maximum fruit size	up to 81 mm (recommended between 65 and 78 mm)			

3. WARRANTY

- **SCOPE OF THE WARRANTY:** The unit has a two-year warranty against defects and construction problems that could harm the correct operation, provided that the inner parts or mechanisms have not been manipulated. The following are excluded from the warranty.

- **EXCLUSIONS:** Labor, trips, transport, parts that have become deteriorated due to natural wear as a consequence of use, as well as any damage resulting from the incorrect usage or installation of the unit and faults caused as a result of force majeure.

- Any incorrect handling of the ID Label will make the Warranty void. Likewise, the warranty will also be void if other persons handle the unit, since only the Official Technical Support Service is qualified and authorized to do so.

- **Always provide the SERIAL N° on the ID Label when contacting the Technical Support Service.**

4. INSTRUCTIONS FOR USE

4.1 PREPARATION

To operate the juicer, follow these steps:

- 1 - Remove the packaging and place the unit on a flat surface.
- 2 - Use the correct voltage, as described on the ID label of the unit.
- 3 - Place the container in the position shown on Fig. 1 (see first page of the manual); make sure that the juice container and the filter are in the correct position and the top is closed and locked. Connect the socket to start the unit.
- 4 - Zumex Essential. Before starting the unit, place the orange feeding tube in the position shown on Fig. 2 (see first page of the manual). Use the 4 mm Allen key supplied with the machine.
- 5 - Zumex Versatile Podium. This juicer with base stand, must be placed on top of the base, matching the two bolts with the holes on the plastic base of the machine, as shown on Fig. 3 (see first page of the manual). Remember to stop the front wheels of the base stand before carrying out this operation.

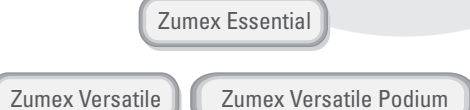
REMEMBER:

Never use fruit with a diameter that exceeds 81 mm. (Recommended between 65 and 78 mm).

EN

4.2 OPERATION

Operation of models:



- Place a glass / jug under the juice outlet and press the green button or “START” push-button (Fig. 4), depending on the model. The machine will start to operate when you press the button.

To stop the juicer, press the red button or “OFF” push-button.

Operation of model:

Zumex Essential Autostart

- After connecting the machine, press the main switch on the back, at the top of the unit. The “OFF” message will appear on the display.
- To start the juicing process, press the “ON” push-button (Fig. 5), and the “AUTO OFF” message will appear on the display, indicating that the unit is stopped in the automatic mode.
- The machine will start automatically when the fruit is placed inside the juicing system, stopping when the process ends.
- To interrupt the juicing process, press “OFF”
- The Zumex Essential Autostart model includes an orange counter to let us know how many pieces of fruit have been used, by means of a double infrared barrier where the fruit is placed in the juicing area.
- To view this information, press “OFF” and when the “OFF” message is displayed, hold the button down until the information is displayed as follows:

Cnt: XXXXXXXX

Where “XXXXXXX” is the quantity of pieces of fruit that have passed down the infrared detector, even when the machine is “OFF”.

Operation of models:

Zumex Versatile D

Zumex Versatile D Podium

- The digital models allow the user to program the number of oranges to be used when the juicer starts to operate. The system can program up to 9 pieces. The quantity programmed will be stored in the memory until a new program is saved.

• Programming:

Guide for the indicators on the digital display (Fig. 6):

1. Start button	5. Network connection indicator	For continuous juicing. Set to «C»
2. One more piece	6. Disconnection push-button	9. Decrease n° of fruit programmed
3. Increase n° of pieces programmed	7. Connection push-button	10. Stop button
4. Wrong placement of top indicator	8. Partial counter (n° fruit programmed).	11. Totals counter

On the control panel (Fig. 6), the light will be lit (n° 5), indicating that the machine is on.

1 - Press «ON» (n° 7) and the partial counter will be lit (n° 8).

2 - Select the number of pieces of fruit used with the push-buttons ▲ and ▼ (n° 3 and 9). When you push the ▲ button, the corresponding digit on the counter will increase the number of units. When you press the ▼ button, the number of units will decrease. After the juicing cycle has ended, more fruit can be used, by pressing «+ 1» (n° 2). However, this will not affect the program.

3 - Digital models can also squeeze in continuous operation (no programming required), so that the machine can operate until the stop button is pressed again. **If you wish to use the continuous operation mode**, select “C” in the partial counter (n° 8); the machine will stop when you press «STOP» (n° 10).

- To start the operation, press «START» (n° 1). When the programmed number of fruits has been squeezed, **the machine will automatically stop**.
- If you wish to stop the cycle, press «STOP» (n° 10) and the machine will stop squeezing at that moment, even if the cycle has not ended.

- However, if you press «OFF» (n° 6), the machine will stop and the machine must be started again to restart all operations.

- The **total counter** (n° 11) will indicate the total number of pieces of fruit squeezed from the start of the operation of the unit. If the counter is manipulated, the circuit will be damaged. We must highlight that the machine counts every unit that has gone through the juicer and not the juicing operations. If the machine does not detect a juicing process during a period of 30 seconds (a red spot is not detected at the lower right of the partial counter) the machine will automatically stop and the display will show a "P" on the screen. This can be due to a problem with the orange or because the sensitivity of the unit is too low. To continue, press "STOP". In case the sensitivity of the unit has to be adjusted, contact your distributor.

4.3 CLEANING

The following steps must be carried out for the correct cleaning of the unit:

- 1-Disconnect the machine.
- 2-Disassemble the front cover.
- 3-Disassemble the cutter head (Fig. 7) pulling towards you, from the handle.
WARNING this element is very dangerous, handle with care.
- 4-Remove the peel extractors from the supports (Fig. 8).
- 5-Disassemble the pressing units in pairs, previously removing the security knobs (Fig. 9).
- 6-Disassemble the container and juice filter (Fig.10).

- All items, **EXCEPT THE FRONT COVER**, can be washed with a dishwasher.
- Clean the juicing area and cover with a soft cloth, dampened with water and soap suitable for tableware.
- Next, rinse with water to ensure there is no soap.

- After cleaning, assemble all elements in the inverse disassembly order. Make sure that all parts are correctly adjusted and secured.

- Remember that each peel ejector (Fig. 8) can only be fitted on each side, since they can not be fitted on the incorrect side. The wedge paddle must be inserted until it reaches the end in the male juicing drum opening.

- In order to avoid the accumulation of wax, the fruit feeder must be cleaned frequently (Fig. 11) for Zumex Versatile and Zumex Versatile Podium.

- In models with base stand, make sure you clean the peel hopper and the inside of the stand to eliminate any peel or pulp remains.

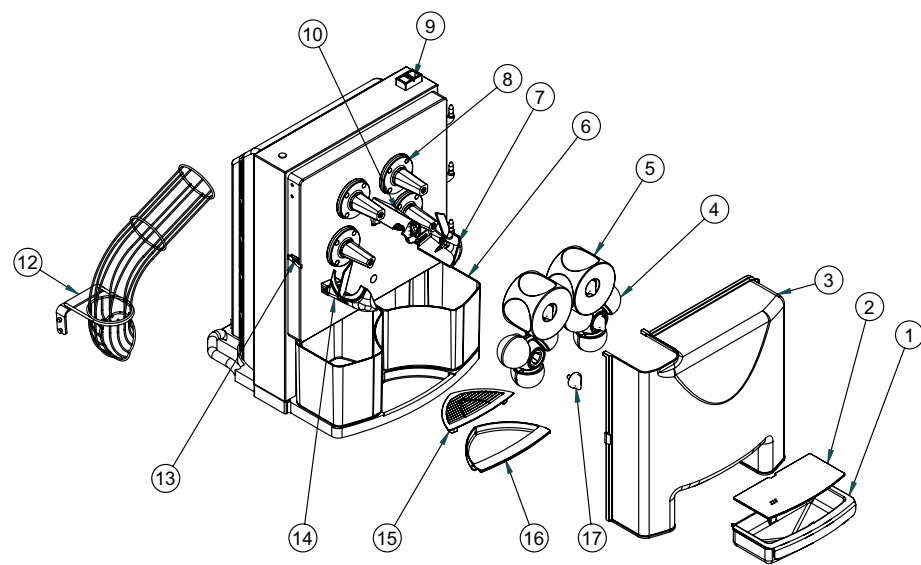
REMEMBER:

- Do not place the front cover in the dishwasher. It can be cleaned with a soft cloth and soapy water. Do not use abrasive products or lime protection products.

- To lengthen the life of the elements **SILVER** finish, we recommend you avoid the use of a dishwasher, using soapy water and a soft cloth at room or warm temperatures.

5. DIAGRAMS WITH PARTS AND LIST OF SPARE PARTS

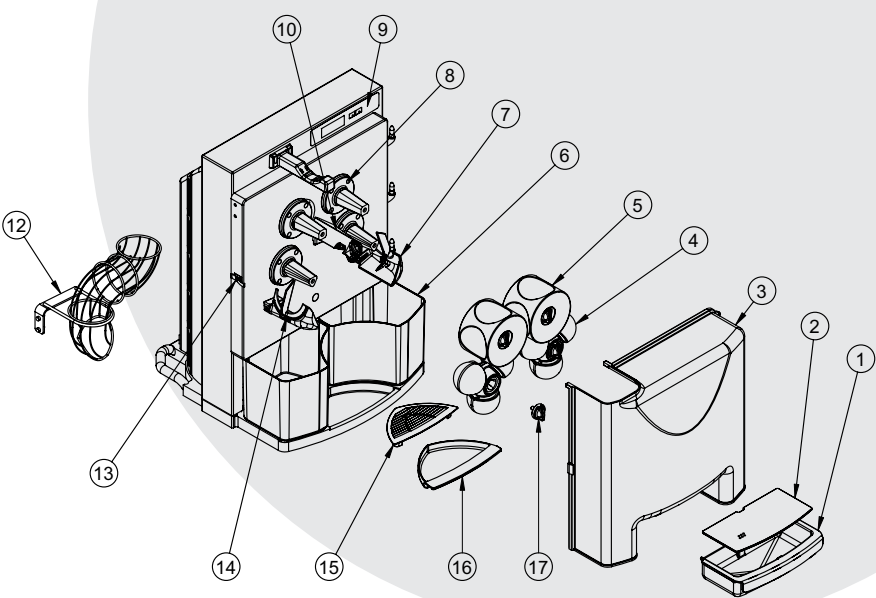
Zumex Essential



Index	Reference	Description
1	33.0023.001	FUME JUICE CONTAINER
2	33.0014.000	CONTAINER FILTER
3	33.0045.001	FRONT COVER
4	33.0031.000	LOWER PRESSING UNIT
5	33.0024.000	UPPER PRESSING UNIT
6	33.0017.100	PEEL BUCKET ORANGE (1)
	33.0017.200	PEEL BUCKET SILVER (2)
	33.0017.150	OB PEEL BUCKET ORANGE(3)
	33.0017.250	OB PEEL BUCKET SILVER (4)
7	33.0001.000	RIGHT PEEL EJECTOR
8	200.3364.000	FASTENER SUPPORT CAP
9	33.0059.000	BUTTON RUBBER PROTECTION
10	33.0013.000	BLADE HOLDER
12	33.0037.000	FEEDER TUBE KIT
13	33.0028.000	COVER LOCK
14	33.0002.000	LEFT PEEL EJECTOR
15	33.0080.000	TRAY FILTER
16	33.0081.000	TRAY
17	33.0003.001	SECURING KNOB

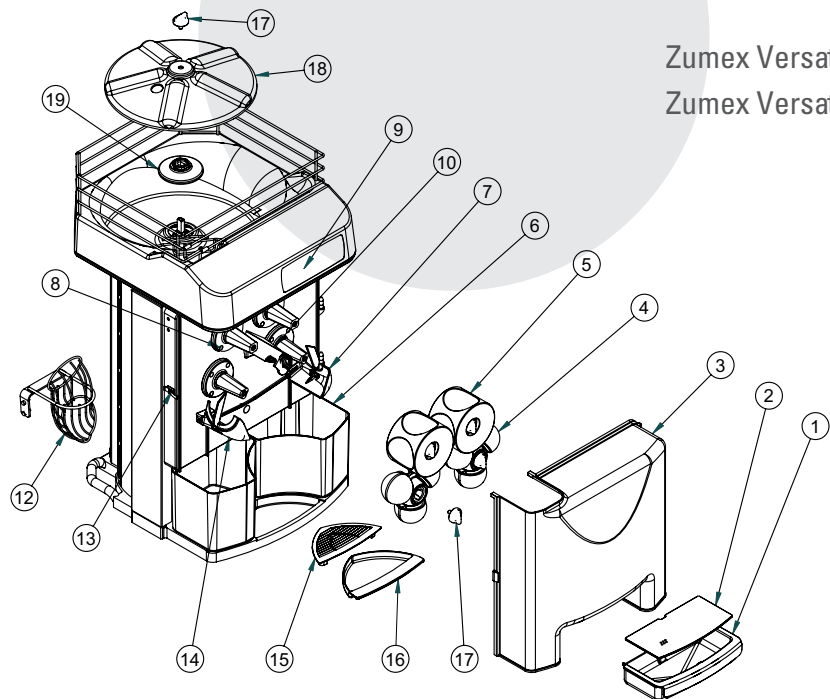
(1) ZUMEX ESSENTIAL
(2) ZUMEX ESSENTIAL SILVER GREY
(3) ZUMEX ESSENTIAL OB
(4) ZUMEX ESSENTIAL OB SILVER GREY

Zumex Essential Autostart



Index	Reference	Description
1	33.0023.001	FUME JUICE CONTAINER
2	33.0014.000	CONTAINER FILTER
3	33.0045.001	FRONT COVER
4	33.0031.000	LOWER PRESSING UNIT
5	33.0024.000	UPPER PRESSING UNIT
6	33.0017.100	PEEL BUCKET ORANGE (1)
	33.0017.200	PEEL BUCKET SILVER (2)
	33.0017.150	OB PEEL BUCKET ORANGE(3)
	33.0017.250	OB PEEL BUCKET SILVER (4)
7	33.0001.000	RIGHT PEEL EJECTOR
8	200.3364.000	FASTENER SUPPORT CAP
9	235.3066.001	AUTOMATIC DISPLAY
10	33.0013.000	BLADE HOLDER
12	33.0050.000	FEEDER TUBE KIT
13	33.0028.000	COVER LOCK
14	33.0002.000	LEFT PEEL EJECTOR
15	33.0080.000	TRAY FILTER
16	33.0081.000	TRAY
17	33.0003.001	SECURING KNOB

(1) ZUMEX ESSENTIAL AUTOSTART
(2) ZUMEX ESSENTIAL AUTOSTART SILVER GREY
(3) ZUMEX ESSENTIAL AUTOSTART OB
(4) ZUMEX ESSENTIAL AUTOSTART OB SILVER GREY

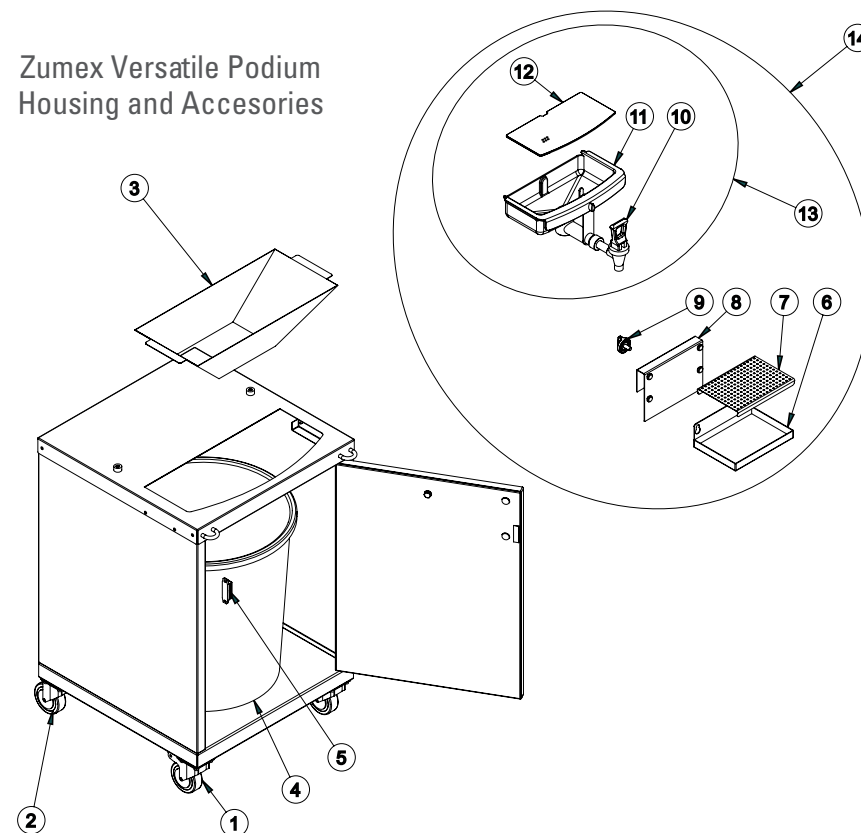


Zumex Versatile
Zumex Versatile D

Index	Reference	Description
1	33.0023.001	FUME JUICE CONTAINER
2	33.0014.000	CONTAINER FILTER
3	33.0045.001	FRONT COVER
4	33.0031.000	LOWER PRESSING UNIT
5	33.0024.000	UPPER PRESSING UNIT
6	33.0017.100	PEEL BUCKET ORANGE (1)
	33.0017.200	PEEL BUCKET SILVER (2)
	33.0017.150	OB PEEL BUCKET ORANGE(3)
	33.0017.250	OB PEEL BUCKET SILVER (4)
7	33.0001.000	RIGHT PEEL EJECTOR
8	200.3364.000	FASTENER SUPPORT CAP
9	235.3062.001	DISPLAY ON-OFF (5)
	235.3061.001	DISPLAY DIGITAL (6)
10	33.0013.000	BLADE HOLDER
12	33.0040.000	FEEDER TUBE KIT
13	33.0028.000	COVER LOCK
14	33.0002.000	LEFT PEEL EJECTOR
15	33.0080.000	TRAY FILTER
16	33.0081.000	TRAY
17	33.0003.001	SECURING KNOB
18	33.0030.000	PLATE KIT
19	215.3318.003	PLATE BASE

(1) ZUMEX VERSATILE
(2) ZUMEX VERSATILE SILVER GREY
(3) ZUMEX VERSATILE OB
(4) ZUMEX VERSATILE OB SILVER GREY
(5) ZUMEX VERSATILE
(6) ZUMEX VERSATILE D

Zumex Versatile Podium
Housing and Accesories



Index	Reference	Description
1	180.0008.000	ROTARY WHEEL, WITH BRAKE
2	180.0007.000	ROTARY WHEEL, WITHOUT BRAKE
3	220.0209.001	STAINLESS STEEL STAND PEEL HOPPER
4	165.0001.003	43 LT BUCKET
5	120.0014.001	DOOR LOCK MAGNET
6	260.0206.000	LOWER STAND TRAY
7	260.0205.001	LOWER TRAY FILTER
8	13.201.001	FIXING BRACKET
9	200.3306.004	SECURING KNOB
10	175.0007.000	SPB-F TAP
11	23.351.000	FUME JUICE CONTAINER WITH MAGNET
12	33.0014.000	CONTAINER FILTER
13	33.023.002	STAND BOTTLE KIT
14	33.022.002	BOTTLE KIT JUICE CONTAINER

6. DETECTING FAULTS AND PROBLEMS

• ALL MODELS

FAULT	POSSIBLE CAUSE	SOLUTION
The machine is not operating	Machine is not on	Connect it
	No voltage	Check the socket
	Top is not placed correctly	Ensure it is placed correctly
	Juice container incorrectly placed	Ensure it is placed correctly
	Drums are blocked	Disconnect the machine and unblock the drums
	Faulty safety detectors	Contact the Technical support service
	Faulty ON/OFF switch	Contact the Technical support service
Machine blocks often when juicing	Faulty circuit	Contact the Technical support service
	Not enough voltage	Check voltage and see if it matches that described in the manual
Drums are not synchronized	Internal fault	Contact the Technical support service
Peel ejector is broken	Peel ejector is incorrectly placed	See the manual for correct placement instructions
Motor is running but pressing units are not running	Internal fault	Contact the Technical support service
Tap is blocked	Juice has pulp or seeds	Remove the top part of the tap and clean
Machine stops after a short period of time	Not enough ventilation	Ensure the ventilation grids of the machine are not blocked
	Too much power	Contact the Technical support service

• ONLY DIGITAL MODELS

FAULT	POSSIBLE CAUSE	SOLUTION
Light nº5 does not turn on (see fig. 6)	No power	Check the unit's connection. If you cannot find the problem, contact the Technical support service
Light nº 4 turns on (see fig. 6)	Safety detectors are not	Check the container and/or top to see if they are placed correctly

• ONLY Zumex Essential Autostart

FAULT	POSSIBLE CAUSE	SOLUTION
The machine does not start	Obstructed Photocells	Clean
	Damaged Photocells	Contact the Technical support service
Photocells are off	Main card connection error	Check the connection
	Damaged leds	Contact the Technical support service
"ERR MOTOR" message	Motor is blocked or there is too much power	Disconnect the unit and unblock
	Motor is disconnected	Contact the Technical support service
	Blown fuse	Contact the Technical support service
	Faulty motor	Contact the Technical support service

IMPORTANT: The machine must be disconnected before trying to unblock it. If these solutions do not work, please contact the Technical Support Service.



CE DECLARATION OF CONFORMITY

We, **ZUMEX Máquinas y Elementos, S.A.**

at Polígono Industrial de Moncada II, C/ La Closa, 16 - 46113 Moncada - Valencia (Spain)

declare under our exclusive responsibility that the following
Citrus Juicers' models

**ZUMEX MINEX
ZUMEX VERSATILE
ZUMEX VERSATILE D PODIUM
ZUMEX SPEED TANK PODIUM
ZUMEX SPEED SELF-SERVICE
PODIUM**

**ZUMEX ESSENTIAL
ZUMEX VERSATILE D
ZUMEX SPEED
ZUMEX SPEED D TANK PODIUM**

**ZUMEX ESSENTIAL AUTOSTART
ZUMEX VERSATILE PODIUM
ZUMEX SPEED D
ZUMEX SPEED SELF-SERVICE**

are in conformity with the following harmonized standards

- EN ISO 12100-1** *Safety of machinery. Basic concepts, general principles for design. Part 1: Basic terminology, methodology.*
- EN ISO 12100-2** *Safety of machinery. Basic concepts, general principles for design. Part 2: Technical principles.*
- EN 60335-1** *Safety of household and similar electrical appliances. Part 1: General requirements.*
- EN 60335-2-14** *Safety of household and similar electrical appliances. Part 2: Particular requirements for kitchen machines.*
- EN 55014-1** *Electromagnetic compatibility. Requirements for household appliances, electrical tools and similar apparatus. Part 1: Emission. Product family standard.*
- EN 55014-2** *Electromagnetic compatibility. Requirements for household appliances, electrical tools and similar apparatus. Part 2: Immunity. Product family standard.*
- EN 61000-3-2** *Electromagnetic compatibility. Part 3: Limits – Section 2: Limits for harmonic current emissions (equipment input current ≤ 16A per phase).*
- EN 61000-3-3** *Electromagnetic compatibility. Part 3: Limits – Section 3: Limitation of voltage fluctuations and flicker in low-voltage supply systems for equipment with rated current ≤ 16A.*
- EN 1672-2** *Food processing machinery. Basic concepts. Part 2: Hygiene requirements.*

complying with the provisions of the following European Directives:

- 98/37/EC** *approximation of the laws of the Member States relating to machinery.*
- 2006/95/EC** *harmonization of the laws of Member States relating to electrical equipment designed for use within certain voltage limits.*
- 2004/108/EC** *approximation of the laws of the Member States relating to electromagnetic compatibility.*
- 93/43/EC** *Directive on the hygiene of foodstuffs*
- 2002/72/EC** *Directive relating to plastic materials and articles intended to come into contact with foodstuffs*

Moncada, 01 October 2007

J. Mengual

ZUMEX, MÁQUINAS Y ELEMENTOS S.A.
Pgno. Inds Moncada II - c/ La Closa, 16
46113 Moncada, Valencia, España
Tfno: +34 961 301 251 - Fax: +34 961 301 255
www.zumex.com - zumex@zumex.com