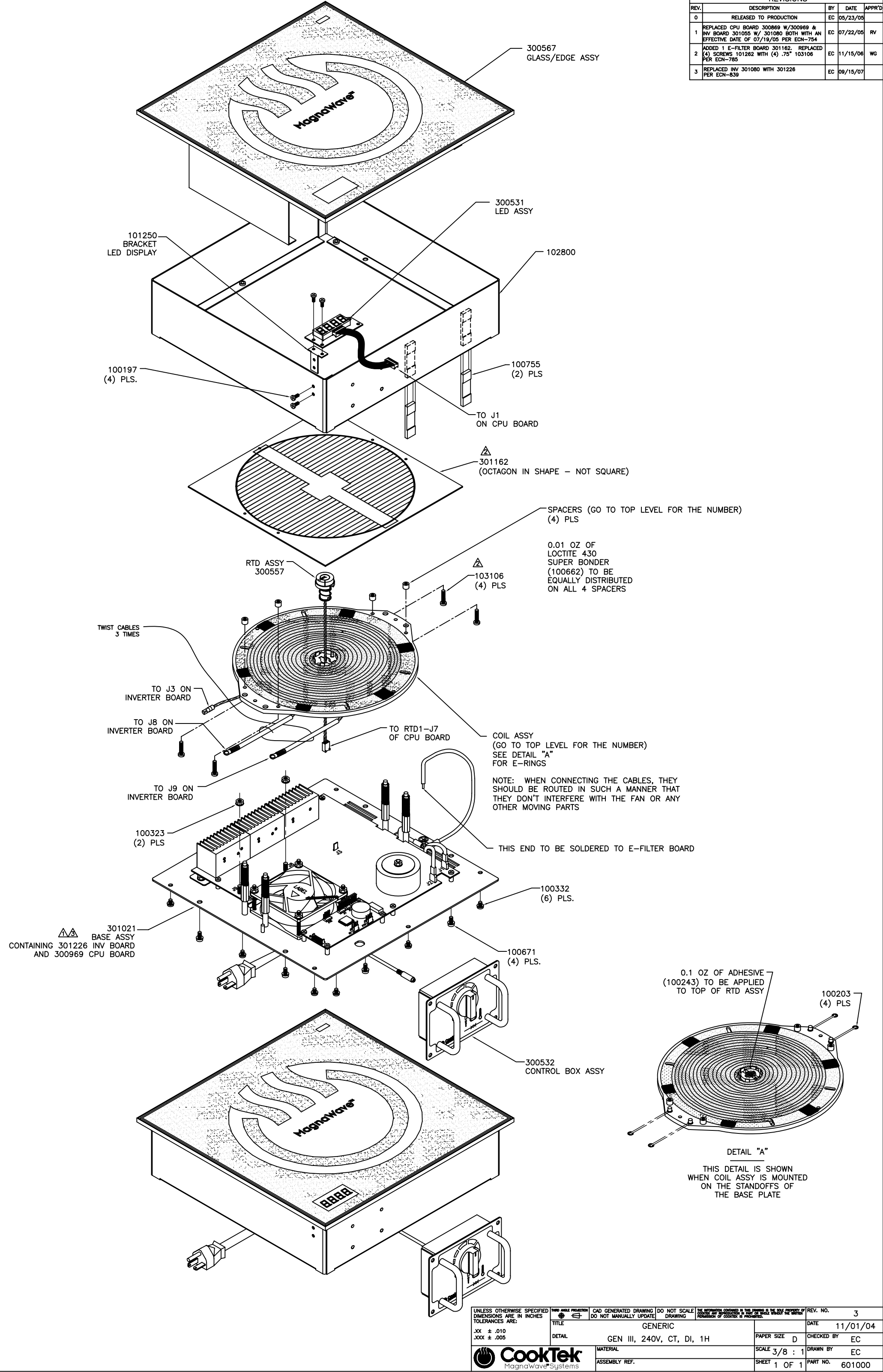


REVISIONS				
REV.	DESCRIPTION	BY	DATE	APPR'D
0	RELEASED TO PRODUCTION	EC	05/23/05	
1	REPLACED CPU BOARD 300869 W/300969 & INV BOARD 301055 W/ 301080 BOTH WITH AN EFFECTIVE DATE OF 07/19/05 PER ECN-754	EC	07/22/05	RV
2	ADDED 1 E-FILTER BOARD 301162. REPLACED (4) SCREWS 101262 WITH (4) .75" 103106 PER ECN-785	EC	11/15/06	WG
3	REPLACED INV 301080 WITH 301226 PER ECN-839	EC	09/15/07	



UNLESS OTHERWISE SPECIFIED DIMENSIONS ARE IN INCHES TOLERANCES ARE:		THIRD ANGLE PROJECTION	CAD GENERATED DRAWING DO NOT MANUALLY UPDATE	DO NOT SCALE DRAWING	THE INFORMATION CONTAINED IN THIS DRAWING IS THE SOLE PROPERTY OF COOKTEK. ANY REPRODUCTION IN PART OR WHOLE WITHOUT THE WRITTEN PERMISSION OF COOKTEK IS PROHIBITED.	REV. NO.	3
XX ± .010	XXX ± .005	TITLE			GENERIC	DATE	11/01/04
DETAIL		GEN III, 240V, CT, DI, 1H			PAPER SIZE	CHECKED BY	EC
MATERIAL		SCALE 3/8 : 1			DRAWN BY	EC	
ASSEMBLY REF.		SHEET 1 OF 1			PART NO.	601000	

