

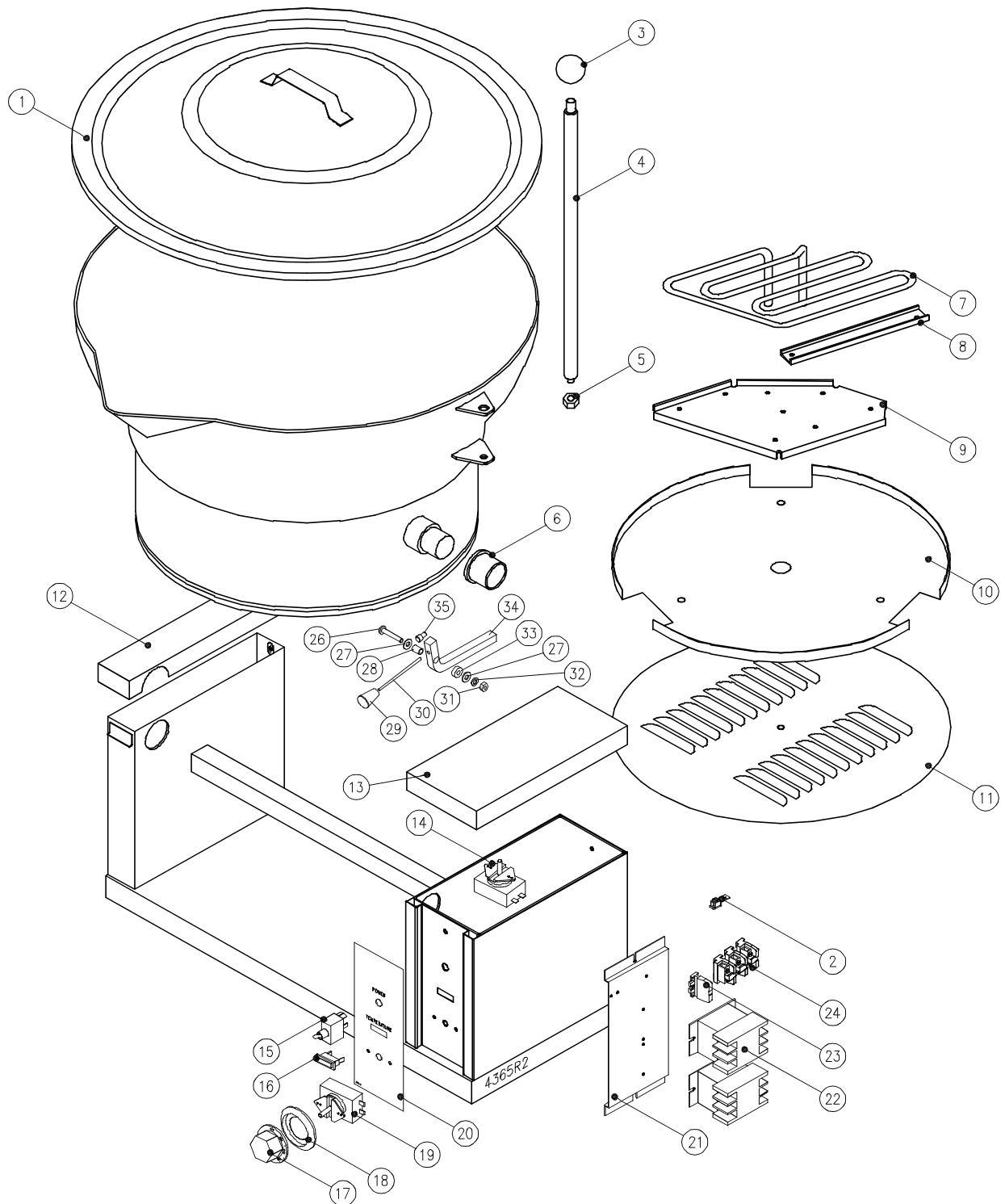
PARTS LIST
ROUND ELECTRIC COUNTER TILTING KETTLE
MODEL ECTRS-16



CROWN FOOD SERVICE EQUIPMENT LTD.
70 OAKDALE ROAD, DOWNSVIEW (TORONTO), ONTARIO, CANADA, M3N 1V9
TELEPHONE: (416) 746-2358, FAX: (416) 746-8324

PRINTED IN CANADA

PARTS LIST, ROUND ELECTRIC COUNTER TILTING KETTLE, MODEL ECTRS-16



PARTS LIST, ROUND ELECTRIC COUNTER TILTING KETTLE, MODEL ECTRS-16

| <u>ITEM</u> | <u>PART NO.</u> | <u>DESCRIPTION</u> | <u>QUANTITY</u> |
|-------------|-----------------|-------------------------------|-----------------|
| 1. | 4403-1 | Cover Assembly | 1 |
| 2. | 4-70EU | Ground Lug | 1 |
| 3. | 2-KB01 | Knob - Red | 1 |
| 4. | 4368-1 | Handle | 1 |
| 5. | 1-7850 | Acorn Nut | 1 |
| 6. | 9036-114 | Bearing | 2 |
| ** 7. | 3162-1 | Element, 2.5 kW, 208V | 3 |
| | 3162-2 | Element, 2.5 kW, 220V, (380V) | 3 |
| | 3162-3 | Element, 2.5 kW, 240V, (415V) | 3 |
| | 3162-4 | Element, 2.5 kW, 277V, (480V) | 3 |
| | 3162-5 | Element, 2.5 kW, 347V, (600V) | 3 |
| 8. | 3686-1 | Capillary Clamp | 1 |
| 9. | 6368-1 | Element Clamp | 1 |
| 10. | 4360-1 | Insulation Pan | 1 |
| 11. | 4370-1 | Bottom Cover | 1 |
| 12. | 3167-1 | Left Hand Console Cover | 1 |
| 13. | 3052-3 | Right Hand Console Cover | 1 |
| 14. | 4-TH45 | High-Limit Thermostat | 1 |
| 15. | 9110-1 | Power Switch | 1 |
| 16. | 4-PL08 | Pilot Light - Amber | 1 |
| ** 17. | 4736-1 | Dial Assembly (°F) | 1 |
| | 4737-1 | Dial Assembly (°C) | 1 |
| 18. | 4-TB05 | Bezel | 1 |
| 19. | 4-TH47 | Regulating Thermostat | 1 |

PARTS LIST, ROUND ELECTRIC COUNTER TILTING KETTLE, MODEL ECTRS-16

| <u>ITEM</u> | <u>PART NO.</u> | <u>DESCRIPTION</u> | <u>QUANTITY</u> |
|-------------|-----------------|--|-----------------|
| 20. | 3174-1 | Operation Panel Decal | 1 |
| 21. | 9-3217 | Component Mounting Plate (3055) | 1 |
| ** 22. | 4-NG41 | Contactor - 208, 220, 240V | 2 |
| | 4-NG41 | Contactor - 380, 415, 220/380, 240/415, 480V, 600V | 1 |
| 23. | 4-22ES | Terminal Block - End Section | 1 |
| ** 24. | 4-22TB | Terminal Block Section - 208, 240, 380, 415, 480, 600V | 3 |
| | 4-22TB | Terminal Block Section - 240/415, 220/380V | 4 |
| ** 25. | M93S-1420-112 | Pan Head Screw, 1/4 - 20 NC x 1-1/2" | 1 |
| 26. | F01S-14 | Flat Washer, 1/4" | 2 |
| 27. | 5830-1 | Bushing | 1 |
| 28. | 4935-1 | Knob | 1 |
| 29. | 5829-1 | Handle Bar | 1 |
| 30. | 9030-1 | Hex Nut, 1/4 - 20 UNC | 1 |
| 31. | S01X-14 | Split Lock Washer, 1/4" | 1 |
| 32. | 5831-1 | Spacer | 1 |
| 33. | 5828-1 | Stop Bar | 1 |
| 34. | M68S-1420-38 | Socket Head Screw, 1/4 - 20 NC x 3/8" | 1 |
| * ** 35. | 4-T251 | Transformer, 380/220V, 50/60 Hz, 100VA | 1 |
| | 4-T251 | Transformer, 415/240V, 50/60 Hz, 100VA | 1 |
| | 4-T255 | Transformer, 480/240V, 60 Hz, 100VA | 1 |
| | 4-T260 | Transformer, 600/240V, 60 Hz, 100VA | 1 |
| * ** 36. | 9092-3 | Fuse, 250V, 3 Amp (208-240V Units) | 2 |
| | 9092-3 | Fuse, 250V, 3 Amp (220/380V, 240/415V Units) | 1 |
| * ** 36. | 9001-2 | Fuse, 600V, 1/2 Amp (380-600V Units) | 2 |

PARTS LIST, ROUND ELECTRIC COUNTER TILTING KETTLE, MODEL ECTRS-16

| <u>ITEM</u> | <u>PART NO.</u> | <u>DESCRIPTION</u> | <u>QUANTITY</u> |
|-------------|-----------------|--|-----------------|
| * ** 37 | 9068-1 | Fuse Holder (208 - 240V Units) | 2 |
| | 9092-3 | Fuse Holder (220/380V, 240/415V Units) | 1 |
| | 9002-1 | Fuse Holder (380 - 600V Units) | 2 |

* NOT SHOWN

** SELECT AS REQUIRED.