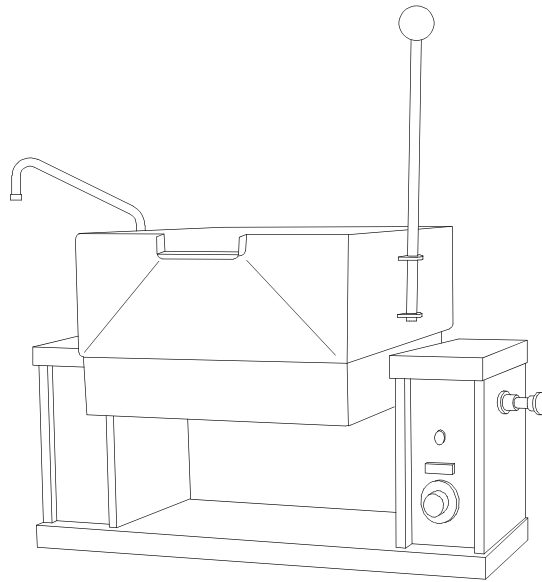


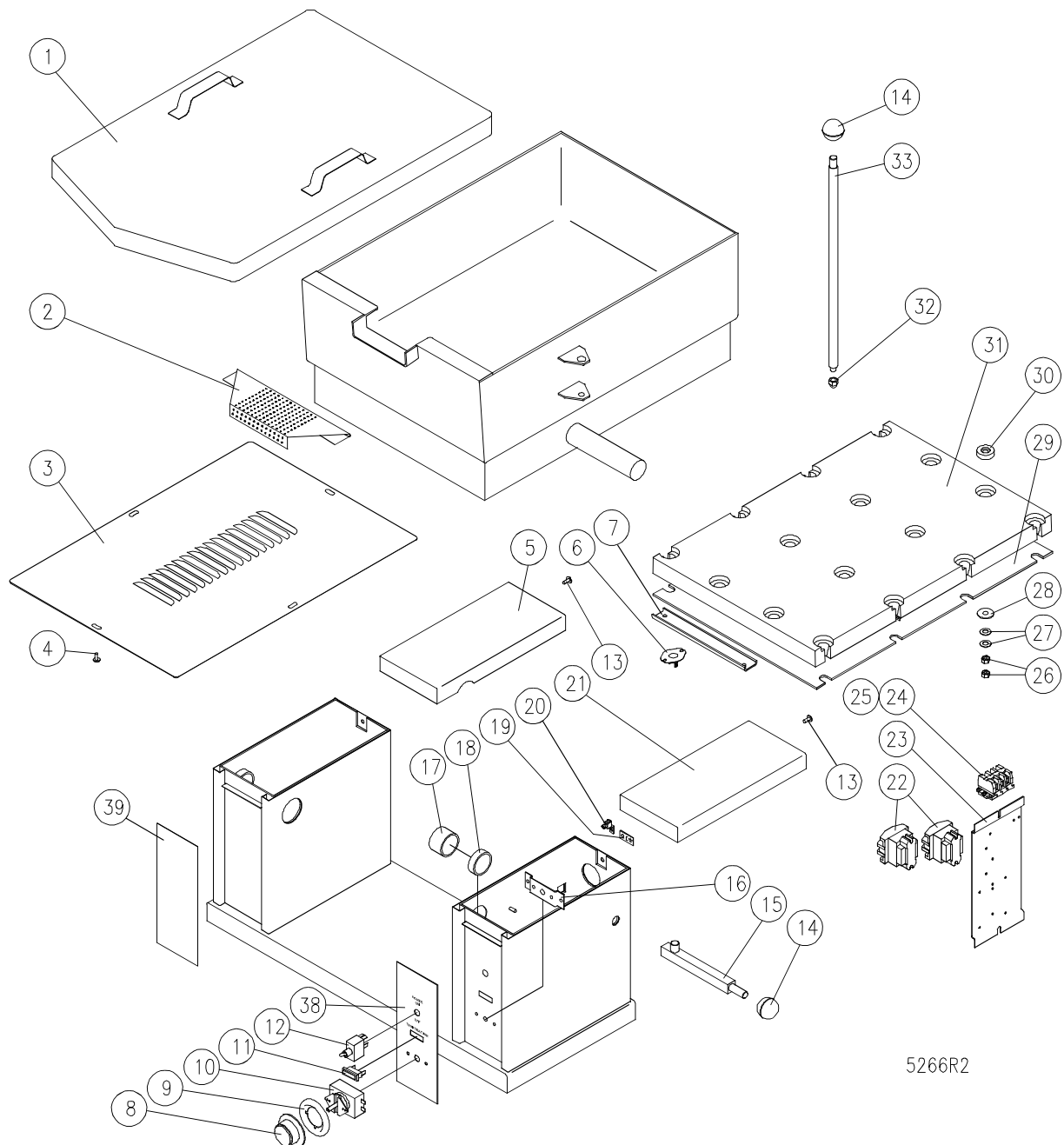
PARTS LIST
ELECTRIC COUNTER TILTING SKILLET
MODEL ECTS-12



CROWN FOOD SERVICE EQUIPMENT LTD.
70 OAKDALE ROAD, DOWNSVIEW, (TORONTO), ONTARIO, CANADA, M3N 1V9
TELEPHONE: (416) 746-2358, FAX: (416) 746-8324
PRINTED IN CANADA

PARTS LIST, ELECTRIC COUNTER TILTING SKILLET, MODEL ECTS-12

FIGURE 1



5266R2

PARTS LIST, ELECTRIC TILTING SKILLET, MODEL ECTS-12

<u>ITEM</u>	<u>PART NO.</u>	<u>DESCRIPTION</u>	<u>QUANTITY</u>
1.	3059-1	Lift Off Cover	1
2.	9-3303	Strainer	1
3.	4172-1	Bottom Cover (9-1003)	1
4.	1-33CA	Screw 10 - 32 x 1/2	4
5.	3052-2	Console Cover, Left Hand	1
6.	4874-2	High-Limit Thermostat	1
7.	3828-1	Thermostat Bulb Clamp	1
* *	8.	4736-1 Dial (°F)	1
		4737-1 Dial (°C)	1
9.	4-TB05	Bezel	1
10.	4-TH47	Thermostat	1
11.	4-PL08	Pilot Light	1
12.	9110-1	Power Switch	1
13.	1-33C4	Screw, 10 - 32 x 1/2	2
14.	2-KB01	Knob	2
15.	3965-1	Rest Bar	1
16.	4473-1	Thermostat Mounting Bracket	1
17.	3968-1	Bearing	2
18.	3413-1	Bearing	2
19.	4188-1	Earth I.D. Tag	1
20.	4-70EU	Ground Lug	1
21.	3052-1	Console Cover, Right Hand	1
* *	22.	4-NG41 Contactor (208, 220, 240V)	2
		4-NG41 Contactor (380, 415, 220/380, 240/415, 480, 600V)	1

PARTS LIST, ELECTRIC TILTING SKILLET, MODEL ECTS-12

<u>ITEM</u>	<u>PART NO.</u>	<u>DESCRIPTION</u>	<u>QUANTITY</u>	
	23.	9-3217	Component Mounting Plate	1
**	24.	4-22TB	Terminal Block Section	3
		4-22TB	Terminal Block Section (240/415, 220/380V)	4
	25.	4-22ES	End Section	1
	26.	1-69C0	Hex Nut, 5/16 - 18	32
	27.	9063-1	Bellville Washer	32
	28.	F01S-516	Flat Washer, 5/16 x 1" OD	16
	29.	6973-1	Insulation	1
	30.	3599-1	Spacer	16
**	31.	7-70580	Element Block, 9 kW, 208V	1
		7-70582	Element Block, 9 kW, 220 (380)V	1
		7-70581	Element Block, 9 kW, 240 (415)V	1
		7-70583	Element Block, 9 kW, 480V	1
		7-70585	Element Block, 9 kW, 347 (600)V	1
	32.	1-7850	Acorn Nut	1
	33.	3589-1	Tilt Handle	1
* **	34.	4-T251	Transformer, 380-220, 50/60 Hz, 100VA	1
		4-T251	Transformer, 415-220, 50/60 Hz, 100VA	1
		4-T255	Transformer, 480-240, 60 Hz, 100VA	1
		4-T260	Transformer, 600-240, 60 Hz, 100VA	1
* **	35.	9092-3	Fuse, 250V, 3A, (208 - 240V Units)	2
* **		9092-3	Fuse, 250V, 3A, (220/380V and 240/415V Units)	1
*		9001-2	Fuse, 600V, 1/2A, (380 - 600V Units)	2
* **	36.	9068-1	Fuse Holder, (208 - 240V Units)	2
		9068-1	Fuse Holder, (220/380V and 240/415V Units)	1

PARTS LIST, ELECTRIC TILTING SKILLET, MODEL ECTS-12

<u>ITEM</u>	<u>PART NO.</u>	<u>DESCRIPTION</u>	<u>QUANTITY</u>
36.	9002-1	Fuse Holder, 600V, (380 - 600V Units)	2
* 37.	3931-1	Faucet Bracket (Optional)	1
38.	3174-1	Operating Console Decal	1
39.	7155-1	Left Console Decal	1

* NOT SHOWN.

** SELECT AS REQUIRED.