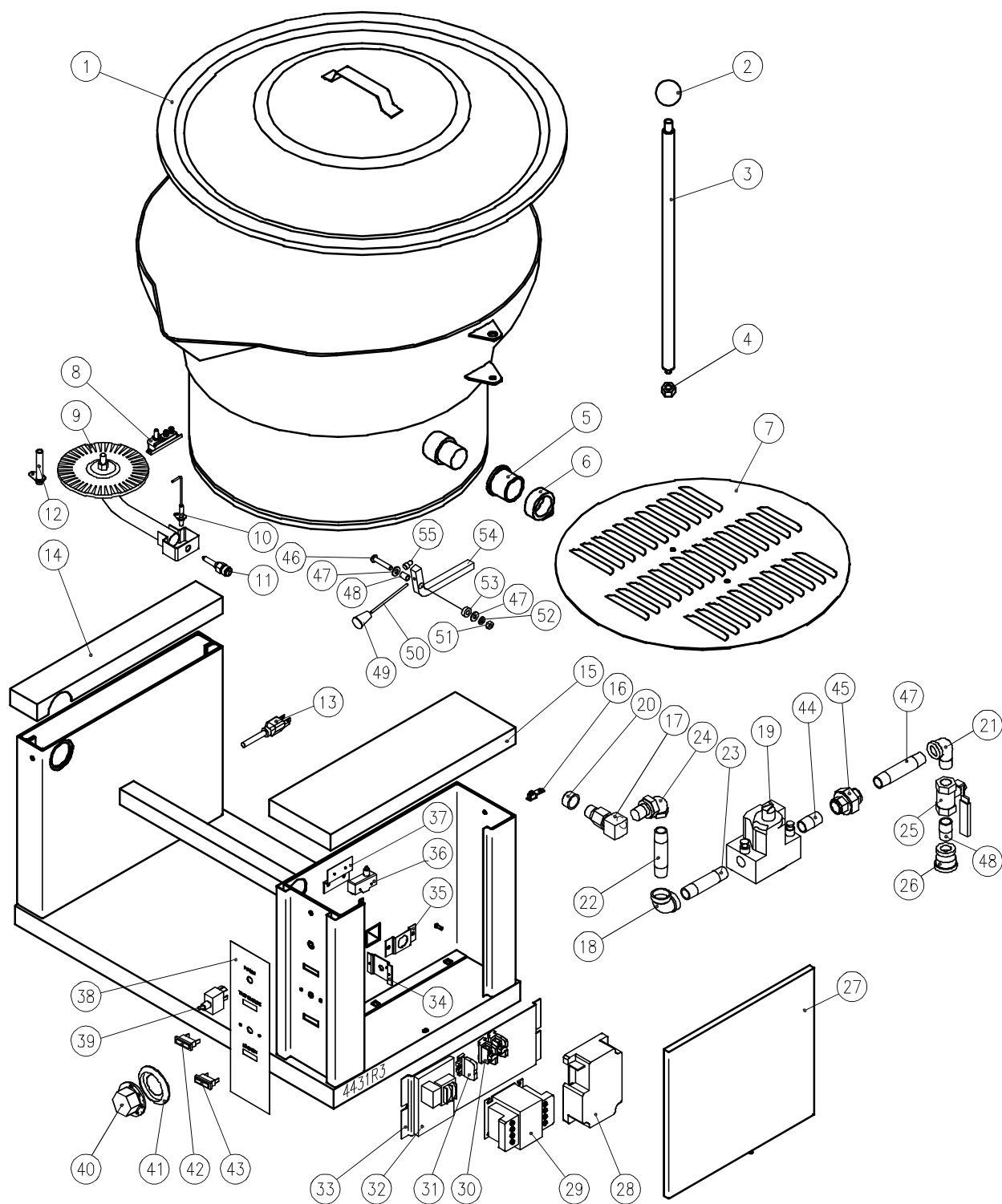


PARTS LIST
ROUND GAS COUNTER TILTING SKILLET
MODEL GCTRS-16



CROWN FOOD SERVICE EQUIPMENT LTD.
70 OAKDALE ROAD, DOWNSVIEW (TORONTO), ONTARIO, CANADA, M3N 1V9
TELEPHONE: (416) 746-2358, FAX: (416) 746-8324
PRINTED IN CANADA

PARTS LIST, ROUND GAS COUNTER TILTING SKILLET, MODEL GCTRS-16



PARTS LIST, ROUND GAS COUNTER TILTING SKILLET, MODEL GCTRS-16

<u>ITEM</u>	<u>PART NO.</u>	<u>DESCRIPTION</u>	<u>QUANTITY</u>	
1	4403-1	Pan Cover	1	
2	2-KB01	Knob - Red	1	
3	4368-1	Handle	1	
4	1-7850	Acorn Nut, 3/8 - 16	1	
5	9036-114	Bearing	2	
6	3546-1	Actuator Collar	1	
7	4426-1	Bottom Cover	1	
8	9-3021	High Limit Thermo Switch	1	
9	6352-1	Burner	1	
10	4883-1	Sensor	1	
**	11	4420-36	Orifice, Natural Gas	1
		4420-44	Orifice, Propane	1
12	4452-1	Glow Coil	1	
13	4127-3	Cord Set, 120V	1	
14	6365-1	Left Hand Console Cover	1	
15	6366-1	Right Hand Console Cover	1	
16	4-70EU	Ground Lug	1	
17	9196-1	Gas Swivel Joint Assembly	1	
18	9011-3	Elbow, 1/2" NPT	1	
**	19	5449-1	Combination Control Valve, Natural	1
		5449-3	Combination Control Valve, Propane	1
**	20	3546-1	Actuator Collar	1
21	9012-3	Street Elbow, 1/2" NPT	1	
22	9009-030	Nipple, 1/2" x 3" NPT	1	
23	9009-034	Nipple, 1/2" x 3-1/2" NPT	1	

PARTS LIST, ROUND GAS COUNTER TILTING SKILLET, MODEL GCTRS-16

<u>ITEM</u>	<u>PART NO.</u>	<u>DESCRIPTION</u>	<u>QUANTITY</u>	
24	3-U4BE	Union Elbow, 1/2"	1	
25	9-2007	Ball Valve, 1/2" NPT	1	
26	9034-1	Reducer Coupling	1	
27	4427-1	Access Panel	1	
28	9024-1	Ignition Module, HSI, 8.5 Seconds	1	
29	4-T264	Transformer	1	
30	4-22TB	Terminal Block Section	2	
31	4-22ES	Terminal Block, End Section	1	
**	32	5555-1	Thermostat c/w Potentiometer, 120V	1
		5555-2	Thermostat c/w Potentiometer, 240V	1
33	4500-1	Component Mounting Plate	1	
34	3691-1	Potentiometer Spacer	1	
35	4430-1	Retaining Bracket	1	
36	4-M605	Limit Switch	1	
37	4434-1	Switch Mounting Bracket	1	
38	6353-1	Control Label	1	
39	9110-1	Power Switch	1	
**	40	4352-1	Dial Assembly (°F)	1
		4689-1	Dial Assembly (°C)	1
41	4-TB05	Bezel	1	
42	4996-2	Pilot Light - Red, 120V	1	
43	4996-6	Pilot Light - Green, 28V	1	
44	9009-014	Nipple, 1/2" NPT x 1-1/2"	1	
45	9015-3	Union, 1/2"	1	
46	M93S-1420-112	Pan Head Screw, 1/4" - 20 x 1-1/2"	1	
47	F01S-14	Flat Washer, 1/4"	2	

PARTS LIST, ROUND GAS COUNTER TILTING SKILLET, MODEL GCTRS-16

<u>ITEM</u>	<u>PART NO.</u>	<u>DESCRIPTION</u>	<u>QUANTITY</u>
48	5830-1	Bushing	1
49	4935-1	Knob	1
50	5829-1	Handle Bar	1
51	9030-1	Hex Nut, 1/4" - 20 UNC	1
52	S01X-14	Split Lock Washer, 1/4"	1
53	5831-1	Spacer	1
54	5828-1	Stop Bar	1
55	M68S-1420-38	Socket Head Screw, 1/4" - 20 x 3/8"	1
*	56	9-3057 Wire Harness for 9024-1, HSI Module	1
*	57	9-3332 Terminal Block, 6 Pole	2
*	58	4343-1 Thermocouple Extension	1
*	59	4342-3 Thermocouple	1
*	60	4447-1 Operation Label (English)	1
		4448-1 Operation Label (French)	1
*	61	9109-2 Rotary Shaft Seal	1
* **	62	9068-1 Fuse Holder (120V Units)	1
		9068-1 Fuse Holder (208-240V Units)	2
* **	63	9192-2 Fuse, 2 Amp, 250V (120V Units)	1
		9192-1 Fuse, 1 Amp. 250V (208-240V Units)	2
*	64	5713-1 Cover, High Limit & Thermocouple	1
* NOT SHOWN.			
** SELECT AS REQUIRED.			