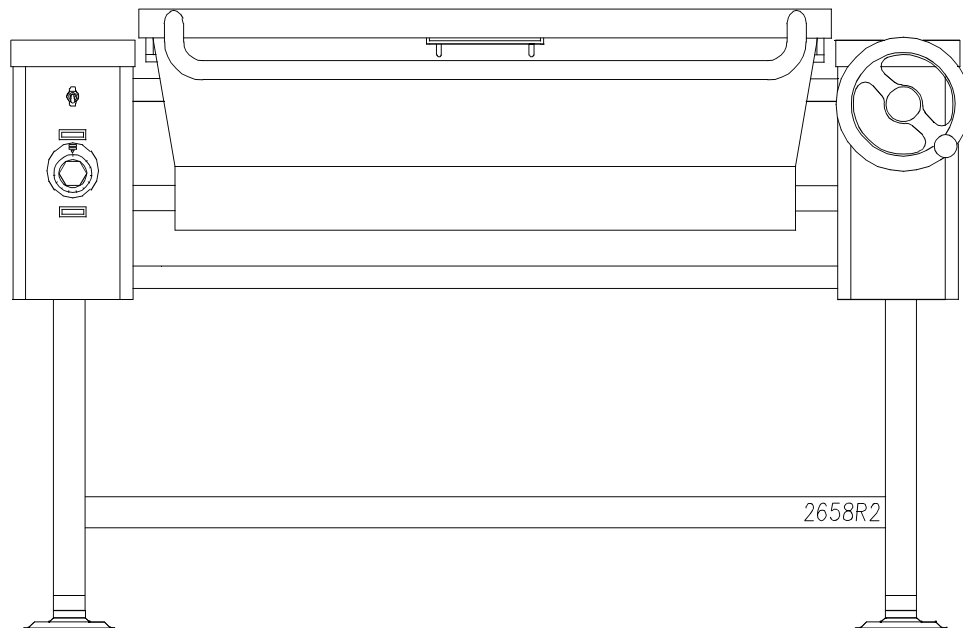


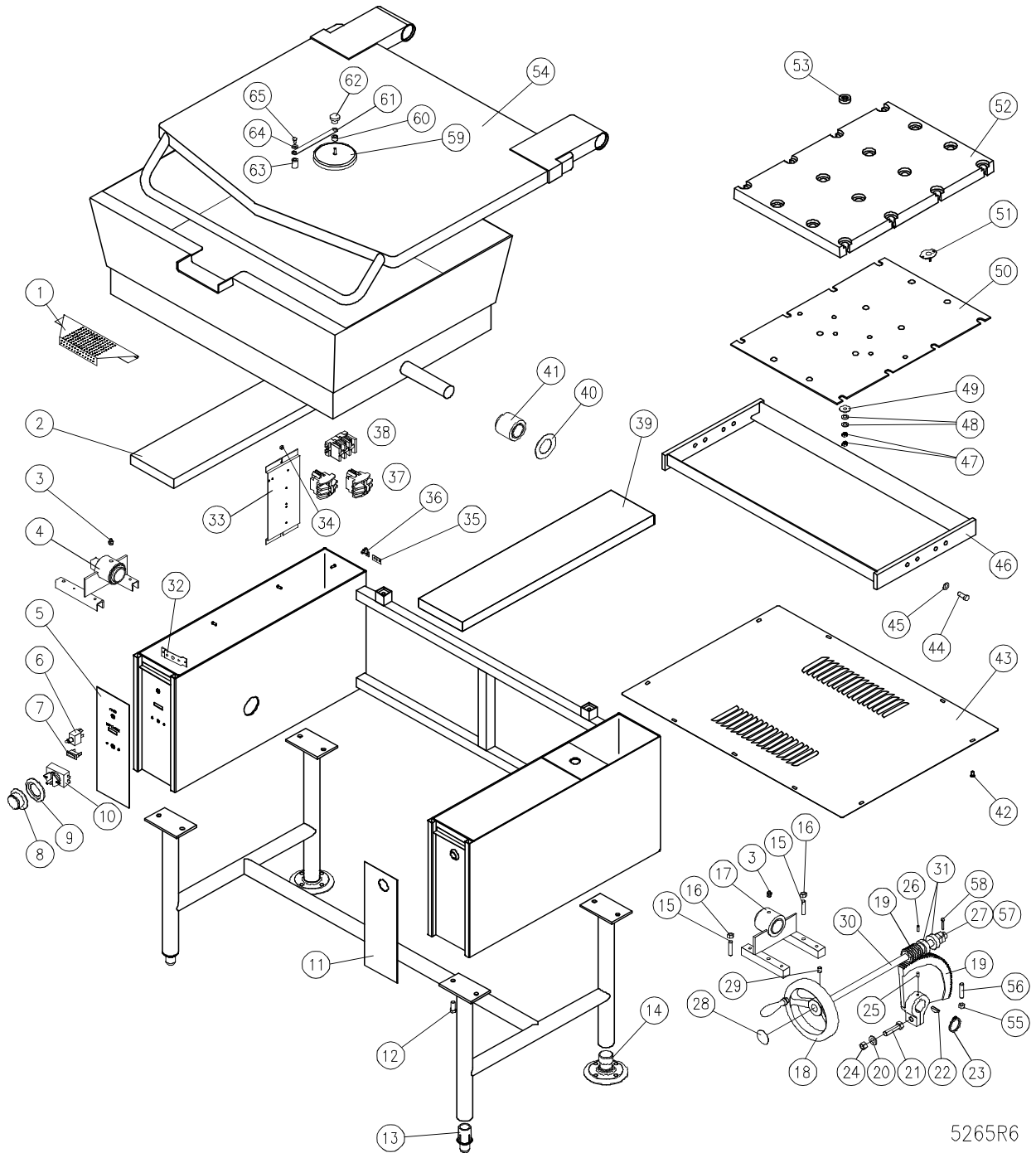
PARTS LIST
ELECTRIC TILTING SKILLETS
MODELS: ETS - 30
ETS - 40



CROWN FOOD SERVICE EQUIPMENT LTD.
70 OAKDALE ROAD, DOWNSVIEW, (TORONTO), ONTARIO, CANADA, M3N 1V9
TELEPHONE: (416) 746-2358, FAX: (416) 746-8324
PRINTED IN CANADA

PARTS LIST, ELECTRIC TILTING SKILLETS, MODELS: ETS-30, ETS-40

FIGURE 1



5265R6

PARTS LIST, ELECTRIC TILTING SKILLETS, MODELS: ETS-30, ETS-40

FIGURE 1

<u>ITEM</u>	<u>PART NO.</u>	<u>DESCRIPTION</u>	<u>QUANTITY</u> <u>30</u>	<u>QUANTITY</u> <u>40</u>
1.	9-3303	Strainer	1	1
2.	4903-1	Left Hand Console Cover	1	1
3.	4898-1	Grease Nipple	2	2
4.	6960-1	Trunnion Housing Assembly	1	1
5.	3185-1	Left Hand Console Decal	1	1
6.	9110-1	Power Switch	1	1
7.	4-PL08	Pilot Light	1	1
**	8.	4736-1	Dial (°F)	1
		4737-1	Dial (°C)	1
9.	4-TB05	Bezel	1	1
10.	4-TH47	Thermostat	1	1
*		3828-1	Clamp, Thermostat Bulb	1
11.	6408-1	Right Hand Console Decal	1	1
12.	1-75C8	Bolt, 3/8 - 16 x 1"	8	8
13.	5-FS64	Adjustable Foot	2	2
14.	8-1308	Flanged Adjustable Foot	2	2
15.	2-72U7	Set Screw, 3/8 - 16 x 1-3/4"	2	2
16.	1-79C0	Nut, 3/8 - 16	2	2
17.	6952-1	Trunnion Housing Assembly	1	1
18.	8-2054	Hand Wheel	1	1
19.	5393-1	Segment Gear & Worm Gear Kit (Includes 20 to 26)		
20.	1-W4C0	Lock Washer, 1/2"	1	1
21.	2-96C8	Bolt, 1/2 - 13 x 2"	1	1

PARTS LIST, ELECTRIC TILTING SKILLETS, MODELS: ETS-30, ETS-40

<u>ITEM</u>	<u>PART NO.</u>	<u>DESCRIPTION</u>	<u>QUANTITY</u> <u>30</u>	<u>QUANTITY</u> <u>40</u>
22.	1-K8U8	Woodruff Key	1	1
23.	1-R315	Retaining Clip	1	1
24.	1-99C0	Nut, 1/2 -13	1	1
25.	1-52U4	Set Screw, 1/4 - 20 x 1/2"	1	1
26.	2-T6U5	Tension Pin, 3/16" D x 1-1/4" L	1	1
27.	2-HN66	Jam Nut, 3/8 - 16	2	2
28.	9-3374	Decal Tilt	1	1
29.	1-76U4	Set Screw, 3/8 - 16 x 1/2"	1	1
30.	6738-1	Tilt Shaft	1	1
31.	5327-1	Thrust Bearing	2	2
32.	4473-1	Thermostat Mounting Bracket	1	1
33.	9-3237	Component Mounting Plate	1	1
34.	1-39C0	Hex Nut 10 - 32	1	1
35.	4188-1	Earth ID Tag	1	1
36.	4-70EU	Ground Lug	1	1
** 37.	4-NG41	Contactor, 208V, 220V, 240V	2	-
	4-NG41	Contactor, 380V, 416V, 480V	1	-
	4-NG41	Contactor, 220/380V, 240/416V	1	1
	4-CG42	Contactor, 208V, 220V, 240V	-	2
	4-CG42	Contactor, 380V, 416V, 480V	-	1
38.	4-33TB	Terminal Block	3	3
	4-33ES	End Section	1	1
** 39.	3450-1	Right Hand Console Cover	1	1
	4902-1	Right Hand Console Cover Faucet Mounting	1	1
40.	3625-1	Washer	2	2

PARTS LIST, ELECTRIC TILTING SKILLETS, MODELS: ETS-30, ETS-40

<u>ITEM</u>	<u>PART NO.</u>	<u>DESCRIPTION</u>	<u>QUANTITY 30</u>	<u>QUANTITY 40</u>
41.	3462-1	Spacer	2	2
42.	1-33C4	Screw, 10 - 32 x 1/2"	9	9
43.	3456-1	Bottom Cover	1	-
43.	3029-1	Bottom Cover	-	1
44.	1-75C7	Bolt, 3/8 - 16 x 7/8"	8	8
45.	1-70C0	Lock Washer, 3/8"	8	8
46.	3459-1	Element Block Tie Down	1	-
	3459-2	Element Block Tie Down	-	1
47.	1-79C0	Nut, 3/8 - 16	56	80
48.	9063-1	Bellville Washer	56	80
49.	F01C-516	Flat Washer, 5/16"	28	40
50.	6973-1	Insulation	2	3
51.	4874-2	High-Limit	2	3
**	52.	7-70580 Element Block, 208V, 9 kW	2	3
		7-70581 Element Block, 240V, (240/416V), 9 kW	2	3
		7-70582 Element Block, 220V, (220/380V), 9 kW	2	3
		7-70583 Element Block, 277V, (480V), 9 kW	2	3
		7-70585 Element Block, 347V, (600V), 9 kW	2	3
53.	3599-1	Spacer	28	40
54.	7153-2	Pan Cover Assembly c/w Vent	1	-
	7154-2	Pan Cover Assembly c/w Vent	-	1
55.	1-79C0	Nut, 3/8 - 16	1	1
56.	2-72U7	Set Screw, 3/8 - 16 x 1-3/4"	1	1
57.	5328-1	Washer, 3/4" ID x 1-1/4" OD	1	1

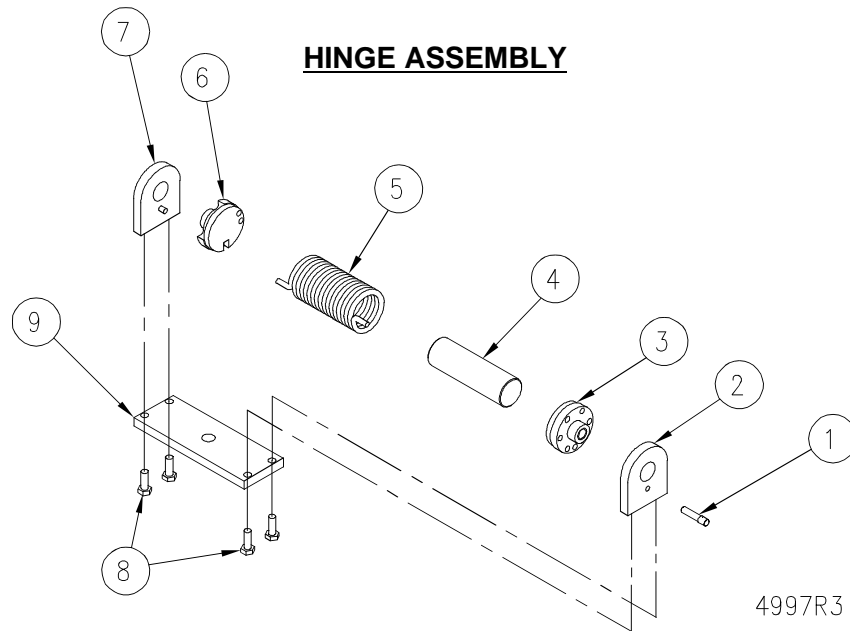
PARTS LIST, ELECTRIC TILTING SKILLETS, MODELS: ETS-30, ETS-40

<u>ITEM</u>	<u>PART NO.</u>	<u>DESCRIPTION</u>	<u>QUANTITY</u> <u>30</u>	<u>QUANTITY</u> <u>40</u>
58.	5329-1	Cotter Pin S.S., 3/16 x 1"	1	1
59.	4139-1	Vent Cover	1	1
60.	4355-1	Swivel Spacer	1	1
61.	5817-1	Arm	1	1
62.	9248-1	Knob	1	1
63.	4354-1	Swivel Base	1	1
64.	F01S-14	Washer, Stainless Steel, 1/4"	1	1
65.	1-55S3	Hex Screw, 1/4 - 20 x 3/8" Stainless Steel	1	1
* **	66.	Fuse Holder, (208 - 240V Units)	2	2
	9068-1	Fuse Holder, (220/380V and 240/415V Units)	1	1
	9002-1	Fuse Holder, (600V, 380 - 600V Units)	2	2
67.	9092-3	Fuse, 250V, 3A, (208 - 240V Units)	2	2
	9092-3	Fuse, 250V, 3A, (220/380V and 240/415V Units)	1	1
	9001-2	Fuse, 600V, (1/2 A, 380 - 600V Units)	2	2

* NOT SHOWN.

** SELECT AS REQUIRED.

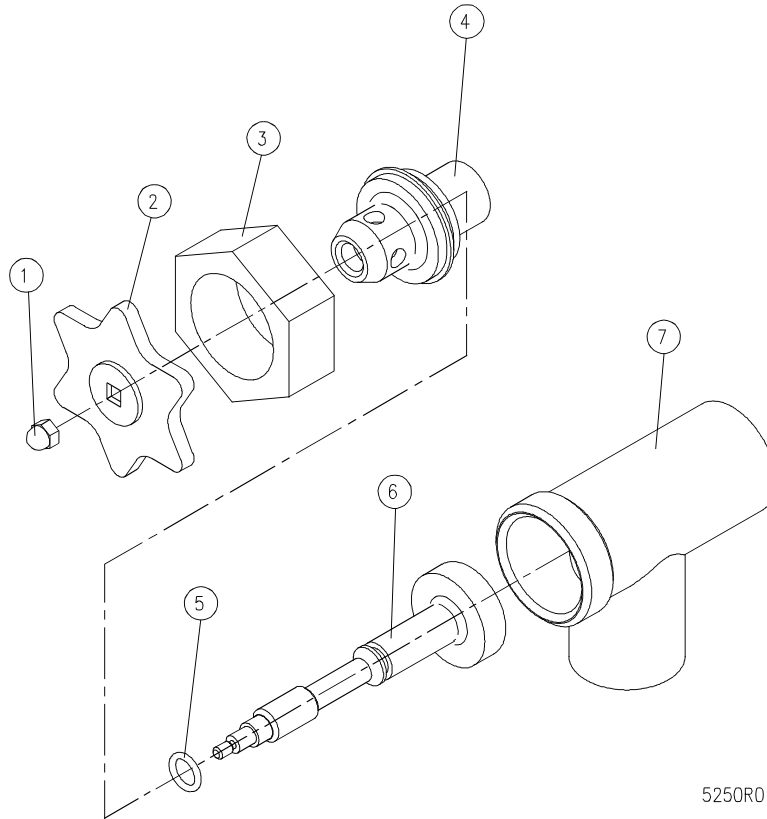
PARTS LIST, ELECTRIC TILTING SKILLETS, MODELS: ETS-30, ETS-40



<u>ITEM</u>	<u>PART NO.</u>	<u>DESCRIPTION</u>	<u>QUANTITY</u>
	9-3185	LARGE HINGE ASSEMBLY	
1.	8-2029	Lock Pin	1
2.	8-2035L	End Lock Plate	1
3.	5428-1	Stationary Disc	1
4.	5430-1	Core	1
5.	8-2026	Spring	1
6.	5429-1	Rotary Disc	1
7.	8-2021	End Stop Plate	1
8.	1-66S6	Cap Screws	4
9.	3730-1	Base Plate	1

PARTS LIST, ELECTRIC TILTING SKILLETS, MODELS: ETS-30, ETS-40

DRAW-OFF VALVE



<u>ITEM</u>	<u>PART NO.</u>	<u>DESCRIPTION</u>	<u>QUANTITY</u>
	3-D015	1-1/2" DRAW OFF VALVE ASSEMBLY	
1.	9031-3	Acorn Nut 10 - 24 UNC	1
2.	4115-1	Handle, Stainless Steel	1
3.	3-DV13	Gland Nut	1
4.	3-DV14	Bonnet	1
5.	3-DV16	"O" Ring	1
6.	3-DV15RV	Stem Assembly	1
7.	3-DV17	Valve Body	1

PARTS LIST, ELECTRIC TILTING SKILLETS, MODELS: ETS-30, ETS-40

<u>ITEM</u>	<u>PART NO.</u>	<u>DESCRIPTION</u>	<u>QUANTITY</u>
	3-D020	2" DRAW OFF VALVE ASSEMBLY	
1.	9031-3	Acorn Nut 10 - 24 UNC	1
2.	4115-1	Handle, Stainless Steel	1
3.	3-DV23	Gland Nut	1
4.	3-DV24	Bonnet	
5.	3-DV26	"O" Ring	1
6.	3-DV25RV	Stem Assembly	1
7.	3-DV27	Valve Body	1

<u>ITEM</u>	<u>PART NO.</u>	<u>DESCRIPTION</u>	<u>QUANTITY</u>
	3-D030	3" DRAW OFF VALVE ASSEMBLY	
1.	3-DV31	Acorn Nut, 7/16 - 14 UNC	1
2.	3-DV32	Handle, Stainless Steel	1
3.	3-DV33	Gland Nut	1
4.	3-DV34	Bonnet	1
5.	3-DV36	"O" Ring	1
6.	3-DV35RV	Stem Assembly	1
7.	3-DV37	Valve Body	1