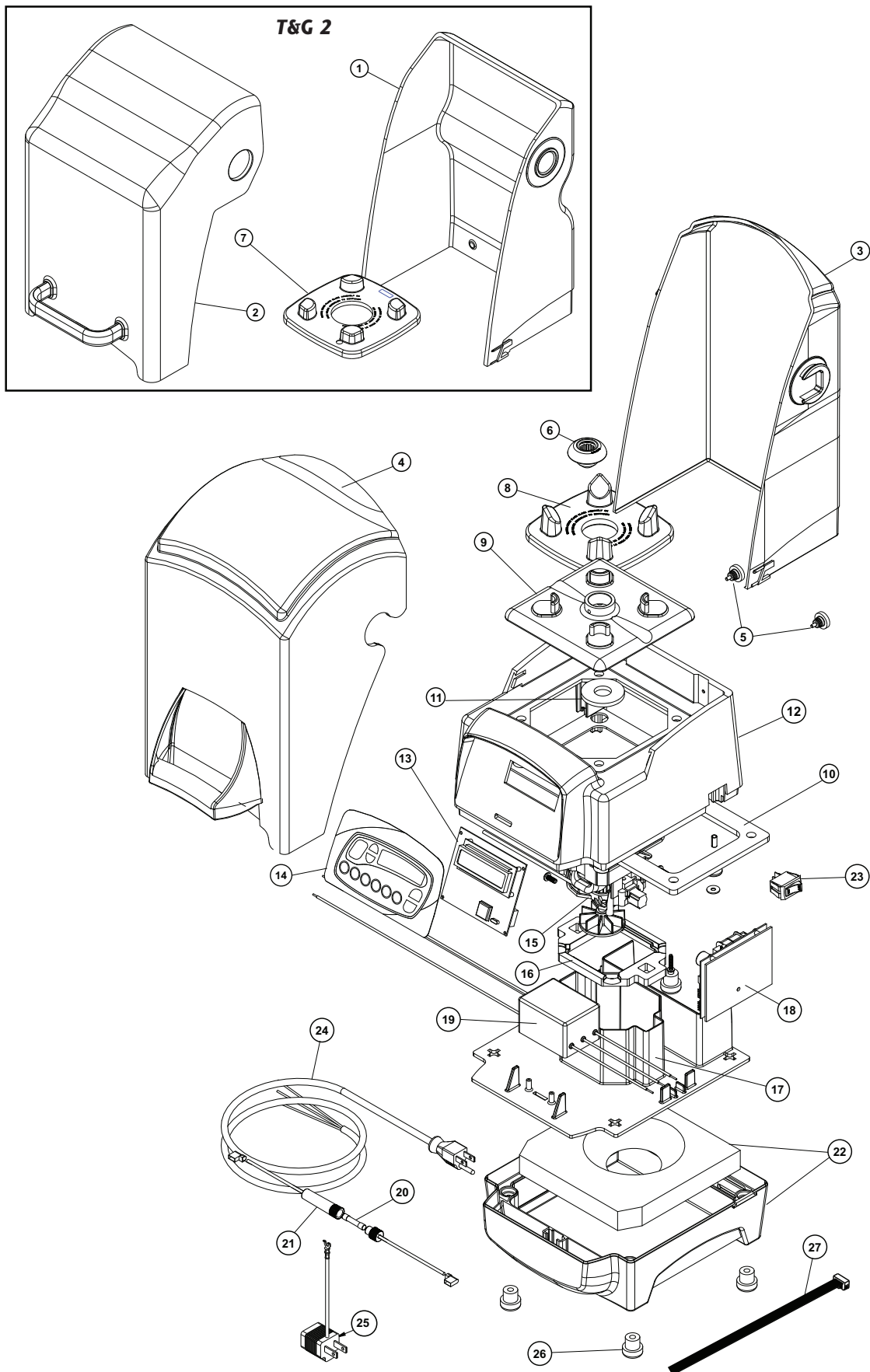


# On-Counter T&G 2™ & Touch & Go® Blending Station®



# **On-Counter T&G 2™ & Touch & Go® Blending Station® Parts List – 100V (Japan), 120V, 120V (Taiwan), 120V EMC (Taiwan), 220/240V**

NO.	NEW PART NO.	OLD PART NO.	DESCRIPTION	VOLTAGE	QTY./ PACK
1	18008	18008	T&G 2 Compact Back Cover only	All	1
2	18007	18007	T&G 2 Compact Door Cover only	All	1
3	18004	18004	Touch & Go Back Cover only	All	1
4	18003	18003	Touch & Go Door Cover only	All	1
5	18005	18005	Thumb Screws for Back Cover (2)	All	2
6	891	891	Drive Socket Assembly	All	1
6	15546	15546	Drive Socket Assembly (Set of 2)	All	2
6	15547	15547	Drive Socket Assembly (Set of 5)	All	5
7	15579	15579	T&G 2/XP Centering Pad	All	1
8	890	890	Touch & Go Centering Pad	All	1
9	15771	CST105	Top Motor Plate	All	1
9	892	892	Touch & Go Top Motor Casting Kit	All	1
10	15772	FOM164	Thick Top Motor Plate Gasket	All	1
11	15773	FOM163	Donut Gasket	All	1
12	15774	PLS160	On-Counter Upper Housing	All	1
13	15802	CTL177	T&G 2 Low Voltage Board Assembly (incl. Memory Cable)	All	1
13	15799	ASY162	Touch & Go Low Voltage Board Assembly (incl. Memory Cable)	All	1
14	15803	CTL175	T&G 2 On-Counter Touch Pad	All	1
14	15777	CTL160	Touch & Go On-Counter Touch Pad	All	1
15	15683	ASY189	Motor Assembly*	220/240V	1
15	15679	ASY185	Motor Assembly*	100/120/120V EMC	1
16	15778	FOM161	Motor Gasket	All	1
17	15779	PLS164	Motor Shroud	All	1
18	15780	CTL173	High Voltage Board Assembly	120/120V EMC/220/240V	1
18	15781	CTL170	High Voltage Board Assembly	100V	1
19	15739	CTL509	EMI Filter	220/240V	1
19	15741	CTL515	EMI Filter	120V EMC	1
20	15782	CTL172	8 Amp Fuse	220/240V	1
21	15783	ASY165	Fuse Holder	220/240V	1
22	15784	ASY160	On-Counter Lower Housing	All	1
23	15785	CTL805	On/Off Rocker Switch	220/240V	1
23	15786	CTL800	On/Off Rocker Switch	100/120V	1
24	By Country	By Country	Power Cord	220/240V	1
24	15738	PLG133	Power Cord	120V EMC	1
24	15756	WIR100	Power Cord	100/120V	1
25	15745	CTL125	Japanese Adapter	100V	1
26	794	794	Rubber Feet (4)	All	4
27	15746	n/a	Memory Cable	All	1

\*If replacing the motor in a Touch & Go Blending Station which was built prior to January 30, 2003 you must also replace the motor shroud (15779).