

SUNKIST Juicer *Commercial*

For fresh-squeezed citrus juice that customers prefer.

Quiet, yet heavy-duty motor

Unique oscillating strainer

Able to extract 10-12 gallons an hour

Listed by UL, NSF Int'l, CSA Int'l & VDE

Interchangeable extracting bulbs

Two-year warranty

Years of proven performance – originally patented in 1918



Available from your foodservice equipment dealer

Contact us for the one nearest you:

(800) 383-7141 • Fax (909) 822-2125

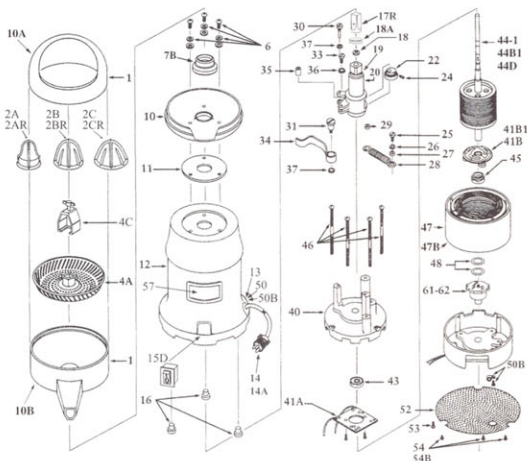
Foodservice Equipment Sales, Sunkist Growers
10509 Business Drive, Unit B, Fontana, CA 92337

www.sunkistfs.com/equipment



Sunkist

Commercial Juicer #8
Parts Information



Specifications

Chrome-plated steel housing.
Corrosion proof plastic dome, spout & bowl support.

Safe...Listed by Underwriters Laboratories, CSA International®, NSF International® & VDE as applicable.

Shipping weight37 pounds

Net weight31 pounds

Overall dimensions17" high 8" diameter

Horsepower1/4

Cube1.12

Carton size22 1/4" x 9 1/4" x 9 1/4"

Part Number Description

1. Plastic Bowl Assembly incl. dome (10A), spout (10B) & bowl support (10)
2. Extracting Bulb Set w/metal insert (only use with 17 or 17C)
A. Lemon/Lime fits #8 model
B. Orange fits #7 & #8 models
C. Grapefruit fits #7 & #8 models
- 2R. Extracting Bulb Set w/o metal insert (only use with 17R)
AR. Lemon/Lime
BR. Orange
CR. Grapefruit
3. Lever Lock & Screws for Strainer (for #7 juicer - not illustrated)
4. Strainer w/Lever Lock & Screws (for #7 juicer - not illustrated)
- 4A. Strainer for #8 juicer
- 4B. Strainer Puller for #8 juicer
6. Bowl Support Screws, Spacers, Washers (set of 3)
7. Umbrella Ring w/Set Screw & Gasket (not illustrated)
- 7B. Umbrella Seal (only for use on grooved eccentric housings, replaces 7, 8 & 9)
8. Umbrella Ring Set Screw (incl'd w/7) (not illustrated)
9. Umbrella Ring Gasket (incl'd w/7) (not illustrated)
10. Plastic Bowl Support only (incl'd w/#1)
- 10A. Plastic Dome only (incl'd w/#1)
- 10B. Plastic Spout only (incl'd w/#1)
11. Bowl Support Gasket
12. Chrome Motor Housing
13. Electric Cord Bushing (use w/ 50B)
14. Electric Cord 115/60
- 14A. Rubber Cord - Export

Part Number Description

15. Toggle Switch w/Switch Guard (not illustrated)
- 15D. Rocker Switch w/Switch Seal
- 15E. Connectors for 14A & 15D (set of 4) (not illustrated)
16. Rubber Feet (set of 3)
17. Shaft Tip w/Pin (not illustrated) (only use with 2A, 2B, and/or 2C)
- 17C. Shaft Tip w/Pin (graduated tip) (not illustrated) (only use with 2A, 2B, and/or 2C)
- 17R. Shaft Tip w/Pin (flat tip) (only use with 2AR, 2BR, and/or 2CR)
18. Eccentric housing Gasket (incl'd w/#20)
- 18A. Shaft Tip Gasket (fits 17C and 17R)
19. Brass Tube
- 20-7. Eccentric Housing w/Bearings, Gasket & Brass Tube #7 Juicer
- 20-8. Eccentric Housing w/Bearings, Gasket & Brass Tube #8 Juicer
- 20-8C. Eccentric Mechanism #8 Juicer
22. Ecc. Hub w/Bearing & Screw
24. Ecc. Hub Hex Screw 1/4-20x1/2
25. Spring Screw to Motor Mount 10-32
26. Lock Washers incl. 36 (2) & 37 (3)
27. Bronze Bushing Coil Spring to Motor Mount 1/4 x 1/4
28. Coil Spring
29. Bronze Bushing Coil Spring to Ecc. Housing 1/4 x 1/4 x 1/4
30. Arm Screw - Small 1/4-32 x 1 1/8
31. Arm Screw - Large 1/4-20 x 2 1/2
33. Spring Screw to Ecc. Housing 1/4-32
34. Eccentric Arm
35. Ecc. Arm Bronze Bushing 1/4 x 1/4 x 1/4
36. Lock Washer, 1/4, Internal Tooth
37. Lock Washer, 1/4, Internal Tooth

Part Number Description

40. Top Motor Casting
- 41A. Stationary Motor Switch - Howell Motor
- 41B. Centrifugal Motor Switch 115V - Howell Motor
- 41B1. Centrifugal Motor Switch 230V - Howell Motor
43. Motor Bearing Top or Bottom - Howell
- 44-1. Rotor w/shaft Howell Motor 115/60
- 44B1. Rotor w/shaft Howell Motor 230/50
- 44D. Rotor w/shaft Howell Motor 230/60
45. Motor Bearing Top or Bottom - Ohio
46. Motor Screws (set of 4)
47. Stator (winding) - Howell Motor 115/60
- 47B. Stator (winding) - Howell Motor 230/50
48. Tension Washers - Howell Motor (set of 2)
50. Electric Cord Strain Relief for J-2
- 50B. Electric Cord Strain Relief for J-1, J-4 & J-5
52. Perforated Base Plate
53. Ground Screw w/Lock Washer for J-1, J-4 & J-5 (set of 2)
54. Base Plate Screws for J-1, J-4 & J-5 (set of 3)
- 54B. Tamper Proof Screws for Base Plate on J-2 (set of 3)
57. Logo Plate, Label and Fasteners
61. Thermal Overload 115/60 - Howell Motor
62. Thermal Overload 230/50 - Howell Motor
64. Model #7 or #8 Motor - 115/60 4.3 amp - 1725 rpm
65. Model #7 or #8 Motor - 230/50 2.5 amp - 1425 rpm
67. Model #7 or #8 Motor - 230/60 2.2 amp - 1725 rpm