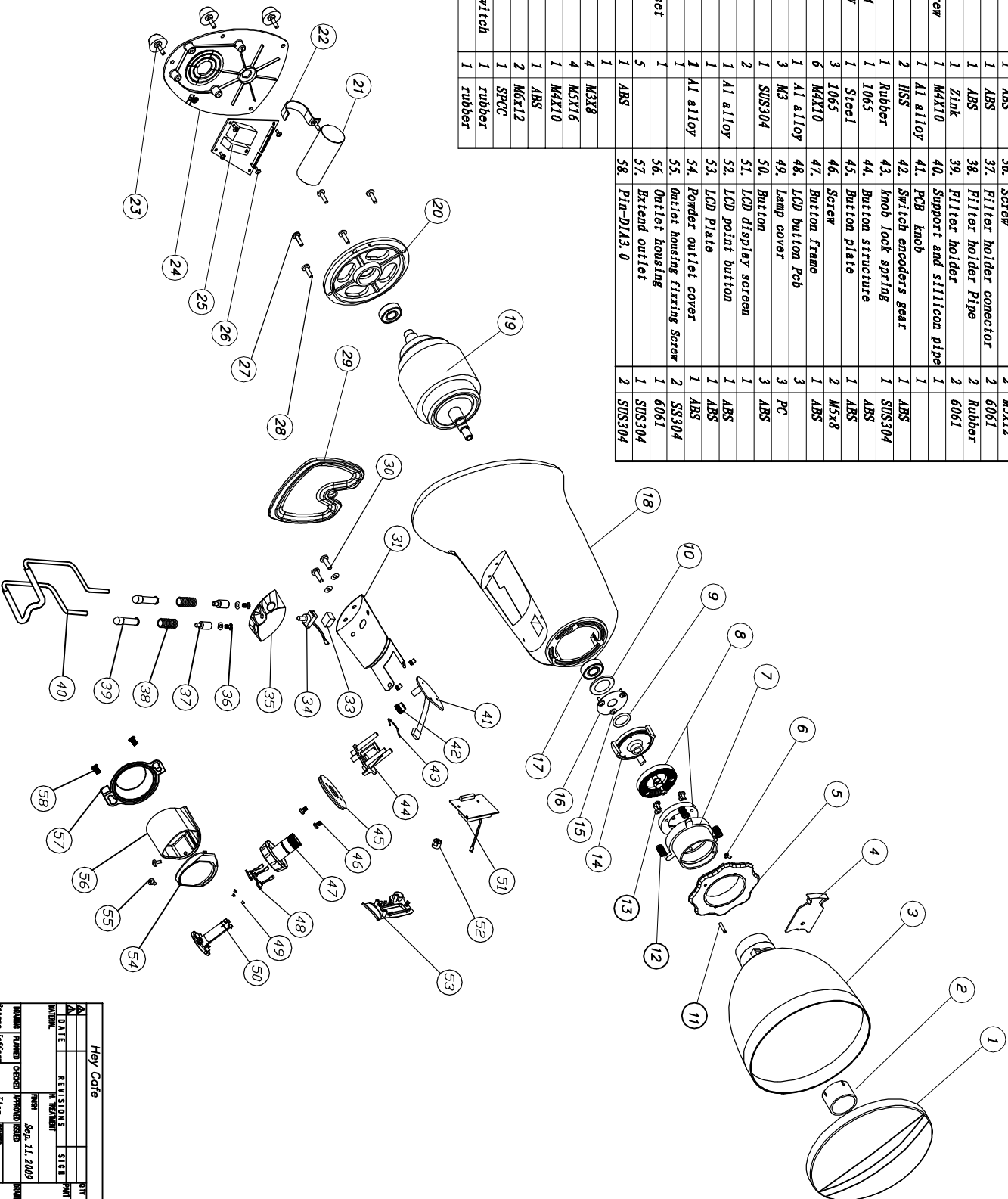


No.	Name	Qty.	Material	No.	Name	Qty.	Material
1.	Beans hopper lid	1	PP	35.	Filter holder base	1	6061
2.	Beans hopper ring	1	ABS	36.	Screw	2	M5x12
3.	Beans hopper	1	ABS	37.	Filter holder connector	2	6061
4.	Beanshopper door	1	ABS	38.	Filter holder Pipe	2	Rubber
5.	Dial	1	Zink	39.	Filter holder	2	6061
6.	Hopper fixing Screw	1	MAX10	40.	Support and silicon pipe	1	
7.	Top holder	2	Al alloy	41.	PCB knob	1	ABS
8.	Grindstone	1	HSS	42.	Switch encoders gear	1	ABS
9.	O ring	1	Rubber	43.	Knob lock spring	1	SUS304
10.	Helical Spring 1MM	1	1065	44.	Button structure	1	ABS
11.	Dial stopper SCREW	1	Steel	45.	Button plate	1	ABS
12.	Dial Spring	3	1065	46.	Screw	2	M5x8
13.	Grindstone Screw	6	MAX10	47.	Button frame	1	ABS
14.	Bottom holder	1	Al alloy	48.	LCD button Peb	3	PC
15.	Dust cover Screw	3	M3	49.	Lamp cover	3	ABS
16.	Shaft Dust cover	1	SUS304	50.	Button	3	ABS
17.	Motor bearing	2		51.	LCD display screen	1	ABS
18.	Body	1	Al alloy	52.	LCD point button	1	ABS
19.	Motor	1	Al alloy	53.	LCD Plate	1	ABS
20.	Back flange	1		54.	Powder outlet cover	1	ABS
21.	Capacitor	1		55.	Outlet housing fixing Screw	2	SS304
22.	Capacitor holder set	1		56.	Outlet housing	1	6061
23.	Leg set	5		57.	Extend outlet	1	SUS304
24.	Bottom cover	1	ABS	58.	Pin-D143. 0	2	SUS304
25.	PCBA Plate	1					
26.	PCBA Screw	4	M3x8				
27.	Flange Screw	4	M5x16				
28.	Grounding screw	1	MAX10				
29.	Bottom tray	1	ABS				
30.	Body Cover screw	2	M6x12				
31.	Body Cover	1	SPCC				
33.	Washer for push switch	1	rubber				
34.	Push switch	1	rubber				



Hey Cafe				Qty	1	Qty to Order	Scale
DATE	REVISION	DATE	SIZE				
11/11/2019	1	11/11/2019	1:1				
HC6000DG							
8SKF00.							