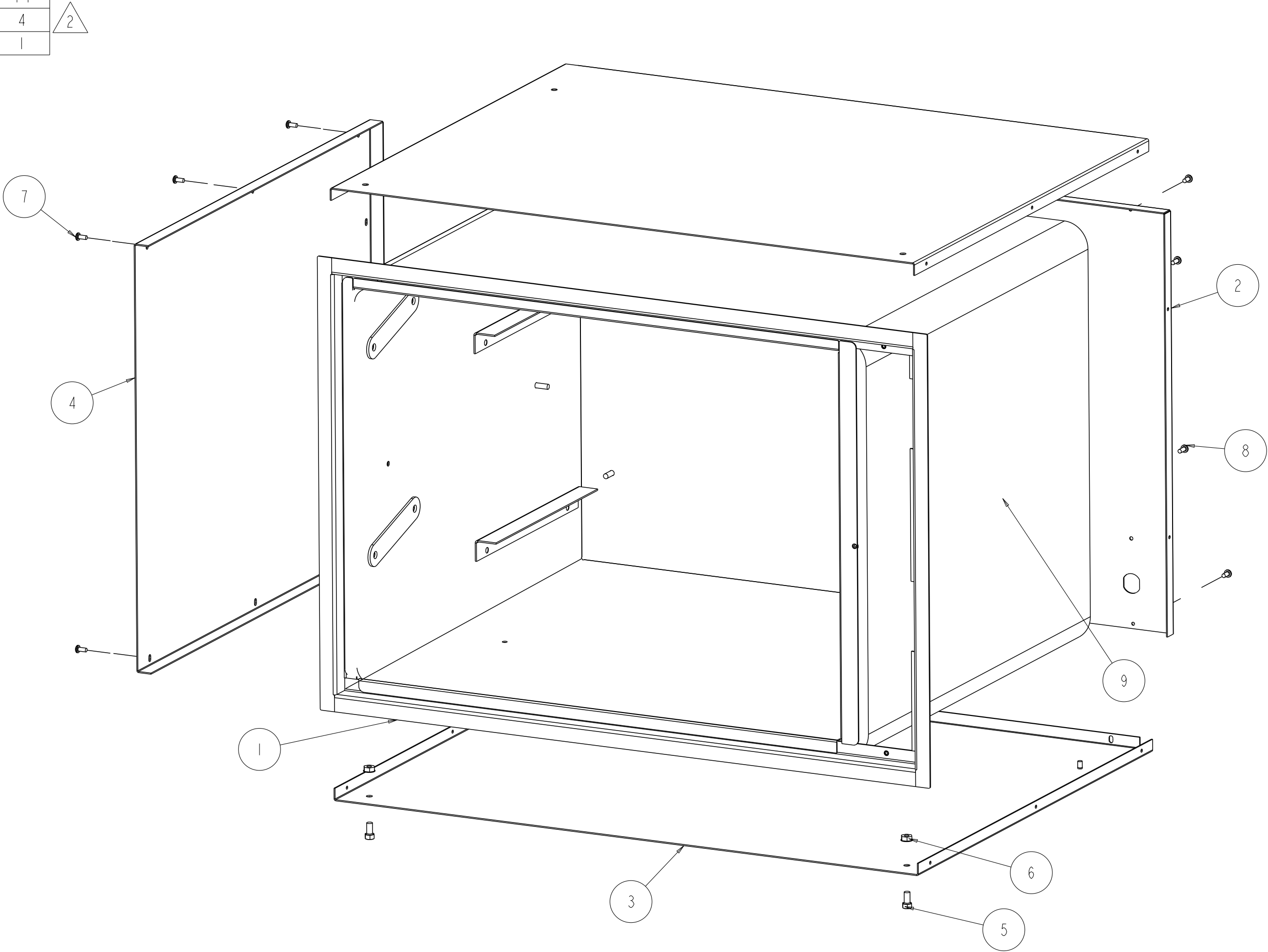


STEP 1			
CORE AND PANEL ASSEMBLY			
ITEM	DESCRIPTION	PART NUMBER	QTY
1	CORE SUBASSEMBLY, HDM-2B	04.16.968.00	1
2	HDMS-2B,BACK,PANEL	04.54.001.00	1
3	HDMS-2B,BASE/TOP	04.54.002.00	2
4	PANEL, SIDE, HDM-2B	04.54.003.00	1
5	SC PLT 1/4-20 X 1/2 HEX	05.04.201.00	2
6	NUT,PLT,1/4-20 KEPS NUT	05.04.205.00	2
7	SC SS 8-32X3/8 PH PN MACH	05.04.301.00	14
8	SC PLT 8-32X7/16 PH PN MACH	05.04.575.00	4
9	INSUL TRS 10 1X21X75	05.05.162.00	1



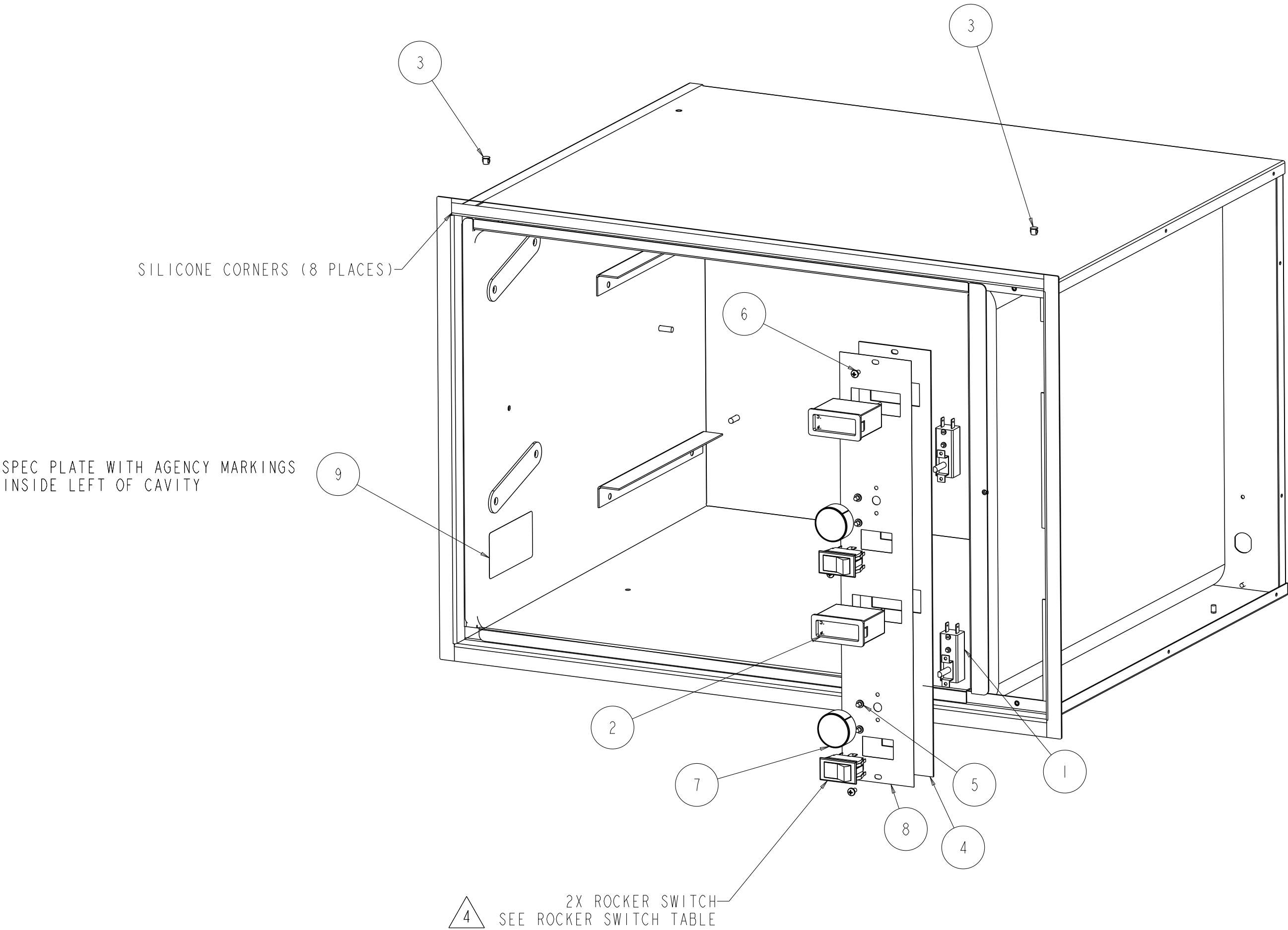
SEE:
10-01-822 FOR 230V WIRE DIAGRAM
10-01-910 FOR 120V WIRE DIAGRAM
10-02-861 FOR CONSTRUCTION DRAWING

RELEASE AND REVISION HISTORY					CK:	
RV	DESCRIPTION	DATE	ENG	RB		
1	RELEASED ECO.#19753	6-24-09	MEG	DLE	UNLESS OTHERWISE SPECIFIED DIMS ARE IN INCHES TOL ON ANGLE $\pm 2.0^\circ$ 2 PL ± 0.02 3 PL ± 0.016 HOLE SIZES: $+.005/- .002$	HATCO CORP., MILWAUKEE, WI
2	CHANGE HARDWARE, ECO.#20301	12-23-09	MEG	WEM		
3	MODIFY 04.54.001.00, ECO.#20352	1-7-10	MEG	DLE		
4	ADD 120 VOLT OPTION, ECO.#20561	3-23-10	MEG	WEM		
-	-	-	-	-	THIS PRINT IS NOT TO BE REPRODUCED WITHOUT PERMISSION OF HATCO CORP.	DESCRIPTION HDM-2B, ASSEMBLY DETAIL
-	-	-	-	-		
-	-	-	-	-		
-	-	-	-	-		
Released					PART NUMBER N/A	DRAWING NUMBER 10-03-381
					SCALE: 0.250	PROJ: 981400
					SHEET 1 OF 4	
					REV 4	

STEP 2			
CONTROL ASSEMBLY			
ITEM	DESCRIPTION	PART NUMBER	QTY
1	T-STAT CONT MECH DRY 82°F.-200°F.	02.16.039.00	2
2	MECHANICAL DRUM THERMOMETER HORIZONTAL	02.16.050.00	2
3	PLUG, DOME .250	02.20.218.00	2
4	CONTROL FACE PLATE, HDM-2	04.16.981.00	1
5	SC PLT M4 X 5mm SLTD	05.04.378.00	4
6	SC PLT 8-32X5/16 PH PN BLACK	05.04.005BK.00	3
7	KNOB, EGO SELECTOR SWITCH	05.30.047.00	2
8	CONTROL FACE PLATE, HDM-2	07.01.332.00	1
9	LABEL, SPEC. PLATE	SS.07.012.00	1

ROCKER SWITCH TABLE	
VOLTAGE	PART NUMBER
120V	02.19.033.00
230V	02.19.022.00

4

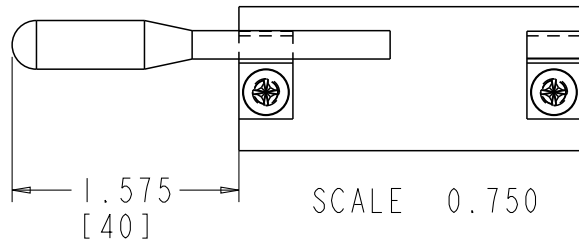


RELEASE AND REVISION HISTORY			CK:	
RV	DESCRIPTION	DATE	ENG	RB
1	RELEASED ECO.#19753	6-24-09	MEG	DLE
2	CHANGE HARDWARE, ECO.#20301	12-23-09	MEG	WEM
3	MODIFY 04.54.001.00, ECO.#20352	1-7-10	MEG	DLE
4	ADD 120 VOLT OPTION,ECO.#20561	3-23-10	MEG	WEM
-	-	-	-	-
-	-	-	-	-
-	-	-	-	-
-	-	-	-	-
			Released	

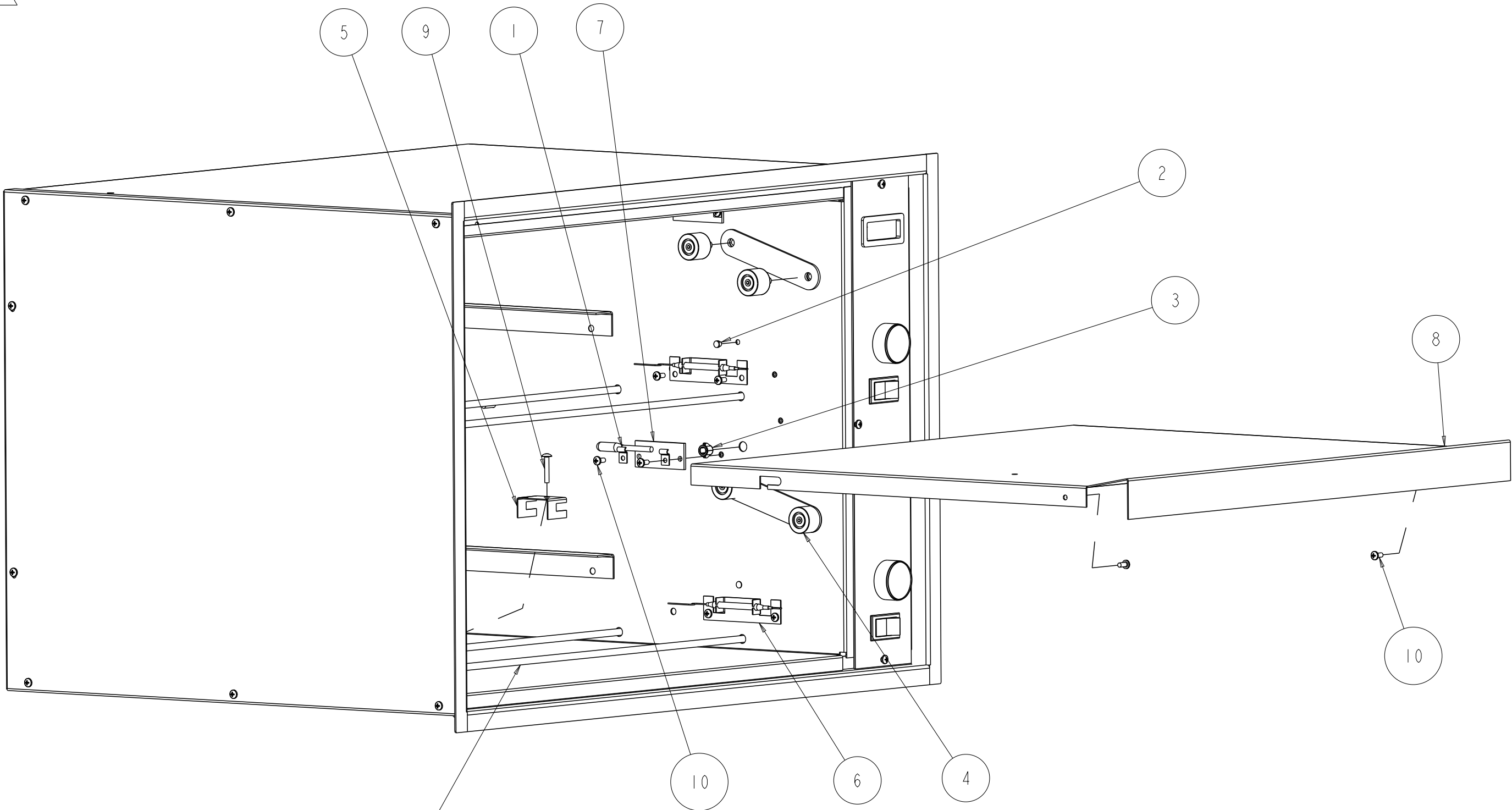
UNLESS OTHERWISE SPECIFIED DIMS ARE IN INCHES TOL ON ANGLE ±2.0° 2 PL ±0.02 3 PL ±0.016 HOLE SIZES: +.005/- .002				HATCO CORP., MILWAUKEE, WI	
THIS PRINT IS NOT TO BE REPRODUCED WITHOUT PERMISSION OF HATCO CORP.				DESCRIPTION HDM-2B,ASSEMBLY DETAIL	
PART NUMBER N/A		DRAWING NUMBER 10-03-381		REV 4	
SCALE:0.250		PROJ: 981400		SHEET 2 OF 4	

STEP 3			
INTERIOR PARTS ASSEMBLY			
ITEM	DESCRIPTION	PART NUMBER	QTY
1	1/8" CABLE CLAMP	02.20.023.00	4
2	PLUG, DOME .187	02.20.220.00	2
3	BUSHING, OPEN/CLOSED 3/8"	02.20.232.00	2
4	HDW ROLLER	04.16.638.00	8
5	ELEMENT CLIP,HDM	04.16.967.00	2
6	BRACKET,THERMOSTAT PROBE,HDM	04.16.970.00	2
7	DRUM DISPLAY,BULB STANDOFF, HDM	04.16.971.00	2
8	PANEL, CENTER, ASSEMBLY, HDM	04.16.972.00	1
9	SC SS 8-32XI PH TRS MACH	05.04.251.00	2
10	SC SS 8-32X3/8 PH PN MACH	05.04.301.00	10

THERMOMETER BULB LOCATION



ELEMENT TABLE	
VOLTAGE	PART NUMBER
120V	02.05.052T.00
230V	02.05.053E.00



4 2X ELEMENT
SEE ELEMENT TABLE

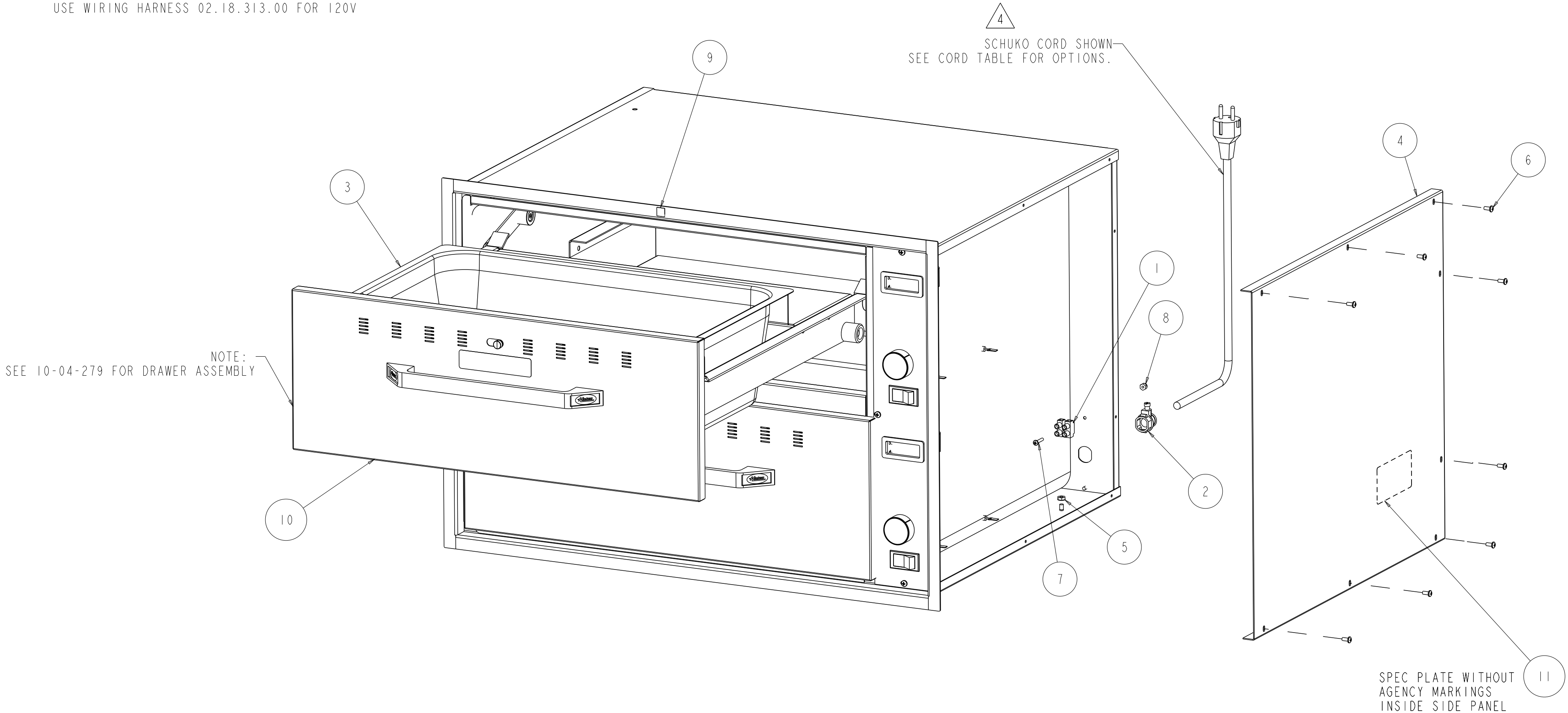
RELEASE AND REVISION HISTORY				CK:			
RV	DESCRIPTION	DATE	ENG	RB			
1	RELEASED ECO.#19753	6-24-09	MEG	DLE	UNLESS OTHERWISE SPECIFIED DIMS ARE IN INCHES TOL ON ANGLE ±2.0° 2 PL ±0.02 3 PL ±0.016 HOLE SIZES: +.005/- .002		
2	CHANGE HARDWARE, ECO.#20301	12-23-09	MEG	WEM			
3	MODIFY 04.54.001.00, ECO.#20352	1-7-10	MEG	DLE			
4	ADD 120 VOLT OPTION,ECO.#20561	3-23-10	MEG	WEM			
-	-	-	-	-	THIS PRINT IS NOT TO BE REPRODUCED WITHOUT PERMISSION OF HATCO CORP.		
-	-	-	-	-			
-	-	-	-	-			
-	-	-	-	-			
Released					HATCO CORP., MILWAUKEE, WI		
					DESCRIPTION HDM-2B,ASSEMBLY DETAIL		
					PART NUMBER N/A	DRAWING NUMBER 10-03-381	REV 4
					SCALE:0.250	PROJ: 981400	SHEET 3 OF 4

STEP 4			
SIDE PANEL AND CORD ASSEMBLY			
ITEM	DESCRIPTION	PART NUMBER	QTY
1	T-BLOCK 2 POLE, 8-14GA, SCREW	02.15.050.00	1
2	CORD GRIP,STRT,.400 MAX.	02.20.212.00	1
3	PAN,FULL SIZE,6" DEEP,22 GA.	04.09.230.00	2
4	PANEL, SIDE, HDM-2B	04.54.003.00	1
5	NUT,PLT,10-32 KEPS NUT	05.04.064.00	1
6	SC SS 8-32X3/8 PH PN MACH	05.04.301.00	8
7	SC PLT 6-32X3/4 PH PN 23 ZNC	05.04.358.00	1
8	NUT, SS, 6-32 CAP, ACORN	05.04.443.00	1
9	LABEL,INTL CAUTION HOT,.51IN	07.03.255.00	1
10	DRAWER ASSEMBLY,HDM	N/A	2
11	LABEL,SPEC. PLATE	SS.07.012.00	1

CORD TABLE		
VOLTAGE	PLUG STYLE	CORD
120V	NEMA 5-15P	02.18.154.00
230V	BS-1363 (BRITISH)	02.18.068.00
230V	CE 7/7 (SCHUKO)	02.18.038.00
230V	AS3112 (AUSTRALIAN)	02.18.105.00

4

NOTE: USE WIRING HARNESS 02.18.281.00 FOR 230V
USE WIRING HARNESS 02.18.313.00 FOR 120V



RELEASE AND REVISION HISTORY			CK:	
RV	DESCRIPTION	DATE	ENG	RB
1	RELEASED ECO.#19753	6-24-09	MEG	DLE
2	CHANGE HARDWARE, ECO.#20301	12-23-09	MEG	WEM
3	MODIFY 04.54.001.00, ECO.#20352	1-7-10	MEG	DLE
4	ADD 120 VOLT OPTION,ECO.#20561	3-23-10	MEG	WEM
-	-	-	-	-
-	-	-	-	-
-	-	-	-	-
-	-	-	-	-
			Released	

UNLESS OTHERWISE SPECIFIED DIMS ARE IN INCHES TOL ON ANGLE $\pm 2.0^{\circ}$ 2 PL ± 0.02 3 PL ± 0.016 HOLE SIZES: $+.005/- .002$				HATCO CORP., MILWAUKEE, WI	
THIS PRINT IS NOT TO BE REPRODUCED WITHOUT PERMISSION OF HATCO CORP.				DESCRIPTION HDM-2B,ASSEMBLY DETAIL	
PART NUMBER N/A		DRAWING NUMBER 10-03-381		REV 4	
SCALE:0.250		PROJ: 981400		SHEET 4 OF 4	