



# Food Rethermalizer/ Bain-Marie Heater

---

## *FR-B (BALANCED) Series*

---

*FR-3B*

*FR-6B*

*FR-4B*

*FR-9B*

---

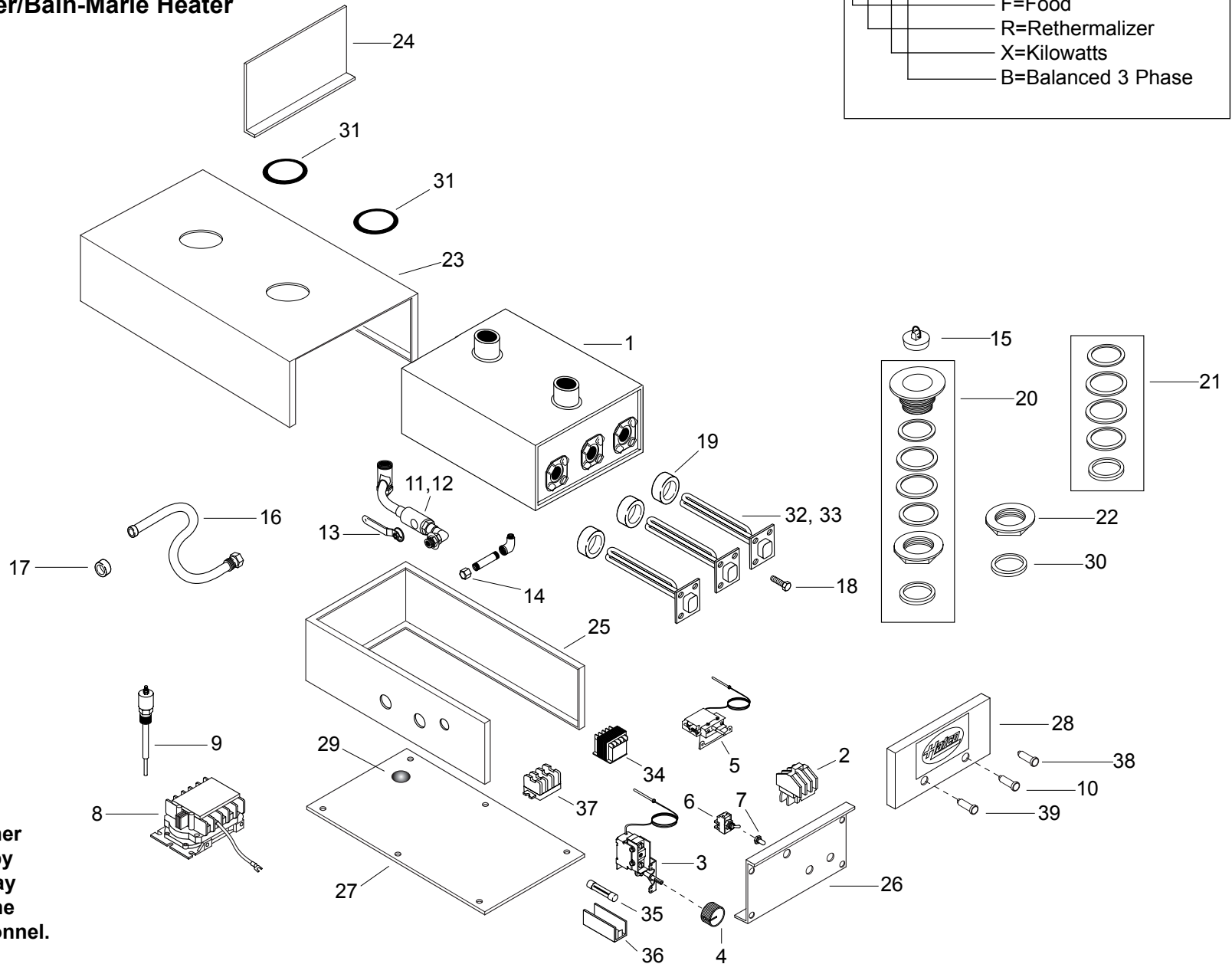
**REPLACEMENT  
PARTS LIST**

---

# HATCO FR-BALANCED SERIES Food Rethermalizer/Bain-Marie Heater

## Model Designation

FR-XB  
 F=Food  
 R=Rethermalizer  
 X=Kilowatts  
 B=Balanced 3 Phase



**CAUTION** - Use of replacement parts other than those supplied by Hatco Corporation may result in damage to the unit or injury to personnel.

## PARTS COMMON TO ALL FR-B MODELS

ITEM	DESCRIPTION	PART NO.	QTY.	ITEM	DESCRIPTION	PART NO.	QTY.
1	Water Tank	R01.04.006.00	1	18	Mounting Bolts, Elements	05.04.062.00	12
2	Contactora	02.01.016.00	1	19	Gasket, Element	05.06.005.00	3
3	Control, Thermostat 192°F (89°C)	02.16.016.00	1	20	Sink Strainer Assembly Kit	R05.30.009.00	2
4	Knob, Thermostat Control	05.30.021.00	1	21	Strainer Gasket Kit	R00.05.0002.00	1†
5	High Limit, Thermostat 210°F (99°C)	02.16.025A.00	1	22	Brass Locknut	05.30.009A.00	2
6	On/Off Power Switch	R02.19.008A.00	1	23	Jacket, Painted	04.06.089.00	1
7	Rubber Boot, Toggle Switch	02.20.040.00	1		Jacket, S.S.*	04.06.090.00	1
8	Control, Low Water Cut Off, (optional)	02.01.002.00	1	24	Rear Plate, Painted	04.06.022.00	1
9	Probe, Low Water Cut Off, (optional)	02.40.001.00	1		Rear Plate, S.S.*	04.06.004A.00	1
10	Indicator Light, Green	02.19.150.00	1	25	Base, Painted	04.06.113.00	1
11	Ball Valve, Thread Fitting (old style)	03.02.001.00	1		Base, S.S.*	04.06.114.00	1
12	Ball Valve, Sweat Fitting (new style)	03.02.002.00	1	26	Base Front, Painted	04.06.081.00	1
13	Handle, Sump Drain	03.02.001B.00	1		Base Front, S.S.*	04.06.082.00	1
14	Drain Cap, Heating Compartment	R03.40.014.00	1	27	Bottom Cover, Painted	04.06.016.00	1
15	Rubber Stopper	05.06.026.00	1		Bottom Cover, S.S.*	04.06.018.00	1
16	Flush Hose With Adapter	05.06.010.00	1	28	Front Cover For Two Indicator Lights, S.S.	04.06.073.00	1
17	Adapter for Hose	05.06.007.00	1		Front Cover For Three Indicator Lights, S.S.*	04.06.074.00	1
				29	Drain Screen Plug, 1" (3 cm)	02.20.026.00	1
				30	Union Gasket	05.06.009.00	2
				31	Grommets, Black Molded Rubber	05.06.008.00	2

\* Not shown.

† Includes all gaskets for both strainers.

**Note:** S.S. is an abbreviation for stainless steel.

### PARTS SPECIFIC TO MODEL FR-3B

ITEM	DESCRIPTION	208V Three Phase	240V Three Phase	415V Three Phase	380-415V CE Three Phase	480V Three Phase
32	Heating Element - Dual, 300/3000 Watts	R02.06.330.00	R02.06.331.00	---	---	---
33	Heating Element, 3000 Watts (Qty. 2-3)	R02.06.300.00	R02.06.301.00	---	R02.06.302.00	R02.06.303.00
34	Transformer	---	---	---	R02.17.003.00	R02.17.002.00
35	Fuse	---	---	---	R02.03.001.02	R02.03.001.02
36	Fuse Holder	---	---	---	02.03.004.00	02.03.004.00
37	Terminal Block	R02.15.003.00	R02.15.003.00	---	R02.15.035.00	R02.15.003.00
38	Indicator Light, Blue	---	---	---	02.19.157.00	---
39	Indicator Light, Yellow	02.19.152.00	02.19.152.00	---	---	02.19.152.00
	Electrical Drawing	HS1-911	HS1-911	---	HS1-4753	HC1-1887

### PARTS SPECIFIC TO MODEL FR-4B

ITEM	DESCRIPTION	208V Three Phase	240V Three Phase	415V Three Phase	380-415V CE Three Phase	480V Three Phase
32	Heating Element - Dual, 300/4500 Watts	R02.06.480.00	R02.06.481.00	---	---	---
33	Heating Element, 4500 Watts (Qty. 2-3)	R02.06.450.00	R02.06.451.00	---	---	R02.06.452.00
34	Transformer	---	---	---	---	R02.17.002.00
35	Fuse	---	---	---	---	R02.03.001.02
36	Fuse Holder	---	---	---	---	02.03.004.00
37	Terminal Block	R02.15.003.00	R02.15.003.00	---	---	R02.15.003.00
38	Indicator Light, Blue	---	---	---	---	---
39	Indicator Light, Yellow	02.19.152.00	02.19.152.00	---	---	02.19.152.00
	Electrical Drawing	HS1-911	HS1-911	---	---	HC1-1887

Shaded area reflects export models only.

### PARTS SPECIFIC TO MODEL FR-6B

ITEM	DESCRIPTION	208V Three Phase	240V Three Phase	415V Three Phase	380-415V CE Three Phase	480V Three Phase
32	Heating Element - Dual, 300/3000 Watts	R02.06.331.00	R02.06.332.00	---	---	---
33	Heating Element, 3000 Watts (Qty. 2-3)	R02.06.301.00	R02.06.302.00	R02.06.303.00	R02.06.303.00	R02.06.603.00
34	Transformer	---	---	R02.17.002.00	R02.17.002.00	R02.17.002.00
35	Fuse	---	---	R02.03.001.02	R02.03.001.02	R02.03.001.02
36	Fuse Holder	---	---	02.03.004.00	02.03.004.00	02.03.004.00
37	Terminal Block	R02.15.003.00	R02.15.003.00	R02.15.003.00	R02.15.035.00	R02.15.003.00
38	Indicator Light, Blue	---	---	---	02.19.157.00	---
39	Indicator Light, Yellow	02.19.152.00	02.19.152.00	02.19.152.00	---	02.19.152.00
	Electrical Drawing	HS1-299	HS1-1637	HS1-5501	HS1-4754	HS1-532

### PARTS SPECIFIC TO MODEL FR-9B

ITEM	DESCRIPTION	208V Three Phase	240V Three Phase	415V Three Phase	380-415V CE Three Phase	480V Three Phase
32	Heating Element - Dual, 300/3000 Watts	R02.06.330.00	R02.06.331.00	---	---	---
33	Heating Element, 3000 Watts (Qty. 2-3)	R02.06.300.00	R02.06.301.00	R02.06.301.00	R02.06.301.00	R02.06.303.00
34	Transformer	---	---	R02.17.002.00	R02.17.002.00	R02.17.002.00
35	Fuse	---	---	R02.03.001.02	R02.03.001.02	R02.03.001.02
36	Fuse Holder	---	---	02.03.004.00	02.03.004.00	02.03.004.00
37	Terminal Block	R02.15.003.00	R02.15.003.00	R02.15.003.00	R02.15.035.00	R02.15.003.00
38	Indicator Light, Blue	---	---	---	02.19.157.00	---
39	Indicator Light, Yellow	02.19.152.00	02.19.152.00	02.19.152.00	---	02.19.157.00
	Electrical Drawing	HC1-2030	HC1-2030	HS1-3639	HS1-4644	HC1-2537

Shaded area reflects export models only.

[illegible]

## This image shows a blank sheet of white paper with horizontal ruling lines. The lines are evenly spaced and run across the width of the page. There are no margins, text, or other markings on the paper.

---

---

## HATCO AUTHORIZED PARTS DISTRIBUTORS

---

---

### ALABAMA

Jones McLeod Appl. Svc.  
Birmingham 205-251-0159

### ARIZONA

Auth. Comm. Food Equip.  
Phoenix 602-234-2443  
Byassee Equipment Co.  
Phoenix 602-252-0402

### CALIFORNIA

Industrial Electric  
Huntington Beach 714-379-7100  
Chapman Appl. Service  
San Diego 619-298-7106  
P & D Appliance  
S. San Francisco 650-635-1900

### COLORADO

All City Service  
Denver 303-454-9500  
Hawkins Commercial Appliance  
Englewood 303-781-5548

### DELAWARE

Food Equipment Service  
Wilmington 302-996-9363

### FLORIDA

Whaley Foodservice Repair  
Jacksonville 904-725-7800  
Nass Service Co., Inc.  
Orlando 407-425-2681  
B.G.S.I.  
Pompano Beach 954-971-0456  
Comm. Appliance Service  
Tampa 813-663-0313

### GEORGIA

Southeastern Rest. Svc.  
Norcross 770-446-6177

### HAWAII

Burney's Comm. Service, Inc.  
Honolulu 808-848-1466  
Food Equip Parts & Service  
Honolulu 808-847-4871

### ILLINOIS

Parts Town  
Broadview 708-865-7278  
Eichenauer Elec. Service  
Decatur 217-429-4229  
Midwest Elec. Appl. Service  
Elmhurst 630-279-8000  
Cone's Repair Service  
Moline 309-797-5323

### INDIANA

Comm. Parts & Service, Inc.  
Indianapolis 317-545-9655

### IOWA

Electric Motor Service Co.  
Davenport 319-323-1823

### KENTUCKY

Comm. Parts & Service, Inc.  
Louisville 502-367-1788

### LOUISIANA

Chandlers Parts & Service  
Baton Rouge 225-272-6620

### LOUISIANA (Continued)

Bana Comm. Parts, Inc.  
Shreveport 318-631-6550

### MARYLAND

Electric Motor Service  
Baltimore 410-467-8080  
GCS Service, Inc.  
Silver Spring 301-585-7550

### MASSACHUSETTS

Ace Service Co., Inc.  
Needham 781-449-4220

### MICHIGAN

Commercial Kitchen Service  
Bay City 517-893-4561  
Bildons Appliance Service  
Detroit 248-478-3320  
Midwest Food Equip. Service  
Grandville 616-261-2000

### MINNESOTA

GCS Service  
Minneapolis 612-546-4221

### MISSOURI

GCS Service, Inc.  
Kansas City 816-920-5999  
Commercial Kitchen Services  
St. Louis 314-890-0700  
Kaemmerlen Parts & Service  
St. Louis 314-535-2222

### NEBRASKA

Anderson Electric  
Omaha 402-341-1414

### NEVADA

Burney's Commercial  
Las Vegas 702-736-0006

### NEW JERSEY

Jay Hill Repair  
Fairfield 973-575-9145  
Service Plus  
Flanders 973-691-6300

### NEW YORK

Acme American Repairs, Inc.  
Brooklyn 718-456-6544  
Alpro Service Co.  
Brooklyn 718-386-2515  
Appliance Installation  
Buffalo 716-884-7425  
Northern Parts Dist.  
Plattsburgh 518-563-3200  
J. B. Brady, Inc.  
Syracuse 315-422-9271

### NORTH CAROLINA

Authorized Appliance  
Charlotte 704-377-4501

### OHIO

Akron/Canton Comm. Svc. Inc.  
Akron 330-753-6635  
Certified Service Center  
Cincinnati 513-772-6600  
GCS Service  
Columbus 614-476-3225  
Electrical Appl. Repair Service  
Independence 216-459-8700

### OHIO (Continued)

E. A. Wichman Co.  
Toledo 419-385-9121

### OKLAHOMA

Hagar Rest. Service, Inc.  
Oklahoma City 405-235-2184  
Krueger, Inc.  
Oklahoma City 405-528-8883

### OREGON

Bressie Electric Co.  
Portland 503-231-7171  
Ron's Service, Inc.  
Portland 503-624-0890

### PENNSYLVANIA

Authorized Factory Service  
Coraopolis 412-262-2330  
FAST Comm. Appl. Service  
Philadelphia 215-288-4800  
GCS Service, Inc.  
Pittsburgh 412-787-1970  
K & D Service Co.  
Harrisburg 717-236-9039  
Elmer Schultz Services  
Philadelphia 215-627-5401  
Electric Repair Co.  
Reading 610-376-5444

### RHODE ISLAND

Marshall Electric Co.  
Providence 401-331-1163

### SOUTH CAROLINA

Whaley Foodservice Repair  
W. Columbia 803-791-4420

### TENNESSEE

Camp Electric  
Memphis 901-527-7543

### TEXAS

City Kitchen Service Co.  
Austin 512-719-4445  
Stove Parts Supply  
Fort Worth 817-831-0381  
Armstrong Repair Service  
Houston 713-666-7100  
Commercial Kitchen Repair Co.  
San Antonio 210-735-2811  
San Antonio Rest. Equip.  
San Antonio 210-824-3271

### UTAH

Peterson's Commercial Parts & Svc.  
Salt Lake City 801-487-3653

### VIRGINIA

Daubers  
Norfolk 757-855-4097  
Daubers  
Springfield 703-866-3600

### WASHINGTON

Restaurant Appl. Service  
Seattle 206-524-8200

### WISCONSIN

A.S.C., Inc.  
Madison 608-246-3160  
A.S.C., Inc.  
Milwaukee 414-543-6460

---

---

## HATCO CORPORATION

P.O. Box 340500, Milwaukee, WI 53234-0500 U.S.A.

(800) 558-0607 (414) 671-6350

Parts & Service Fax (800) 690-2966 Int'l. Fax (414) 671-3976

www.hatcocorp.com