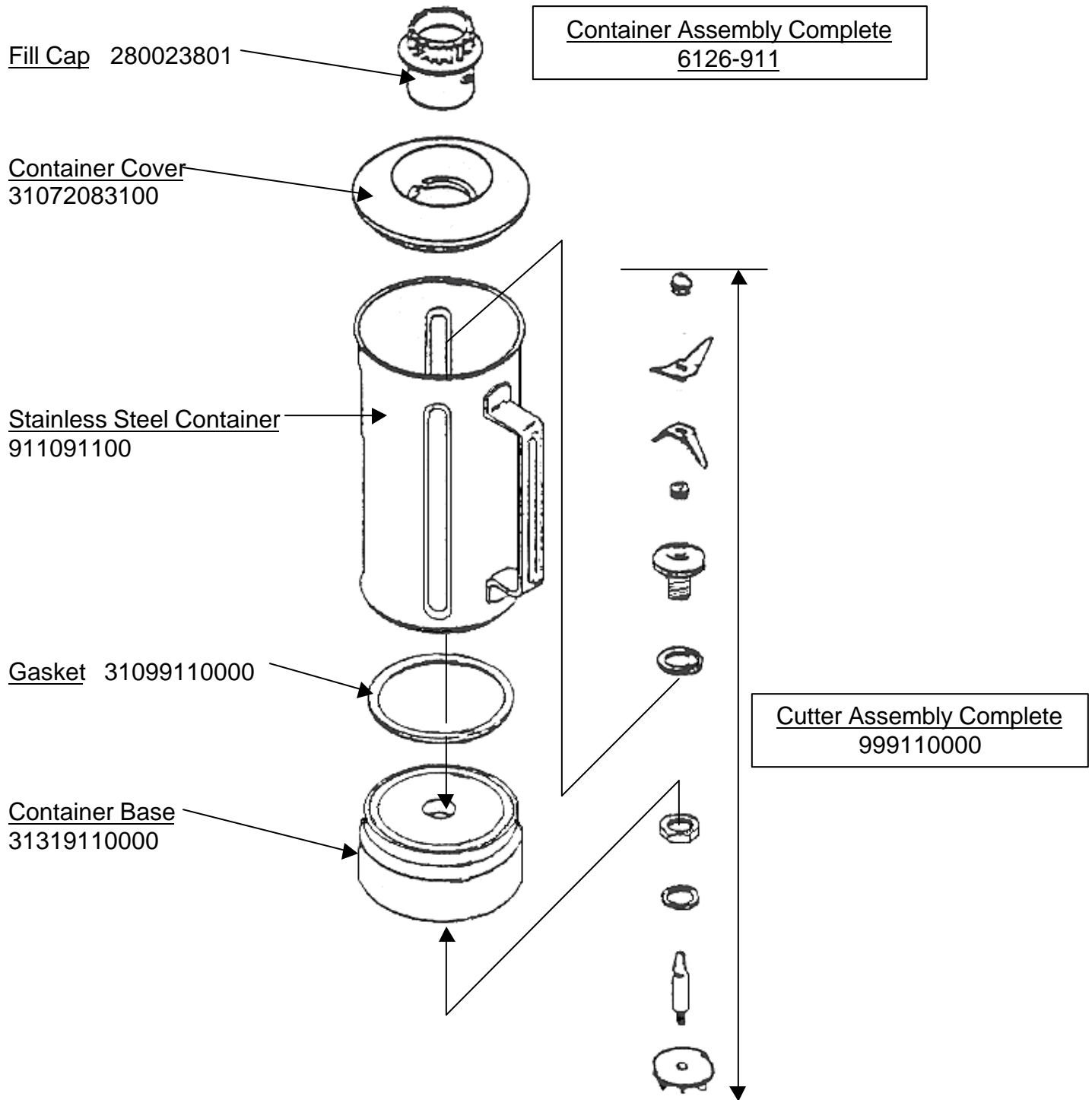


# Hamilton Beach Commercial

March 1998 Rev. A

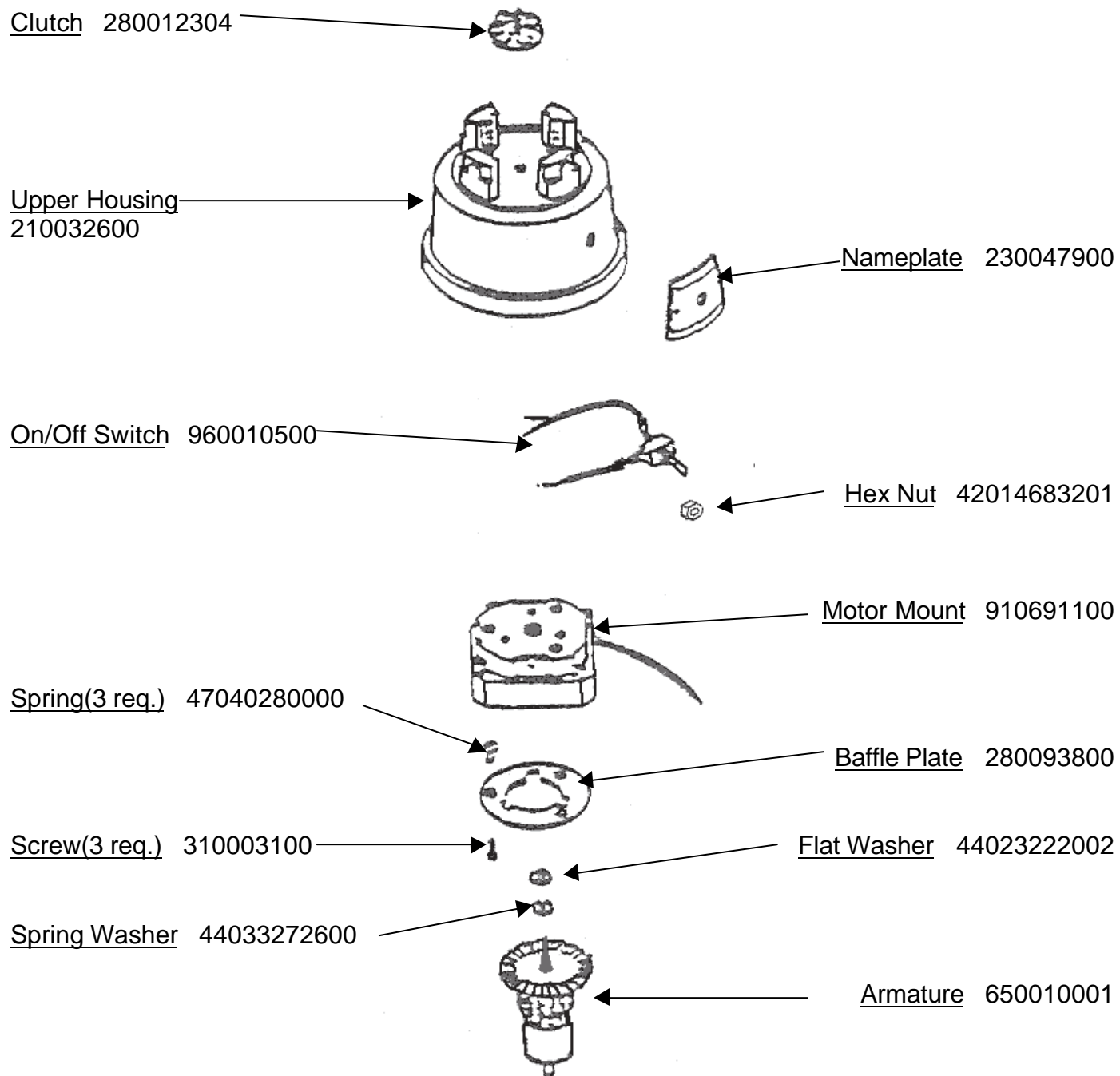
## 1G911 Container / Cutter Assembly



# Hamilton Beach Commercial

March 2001 Rev. E

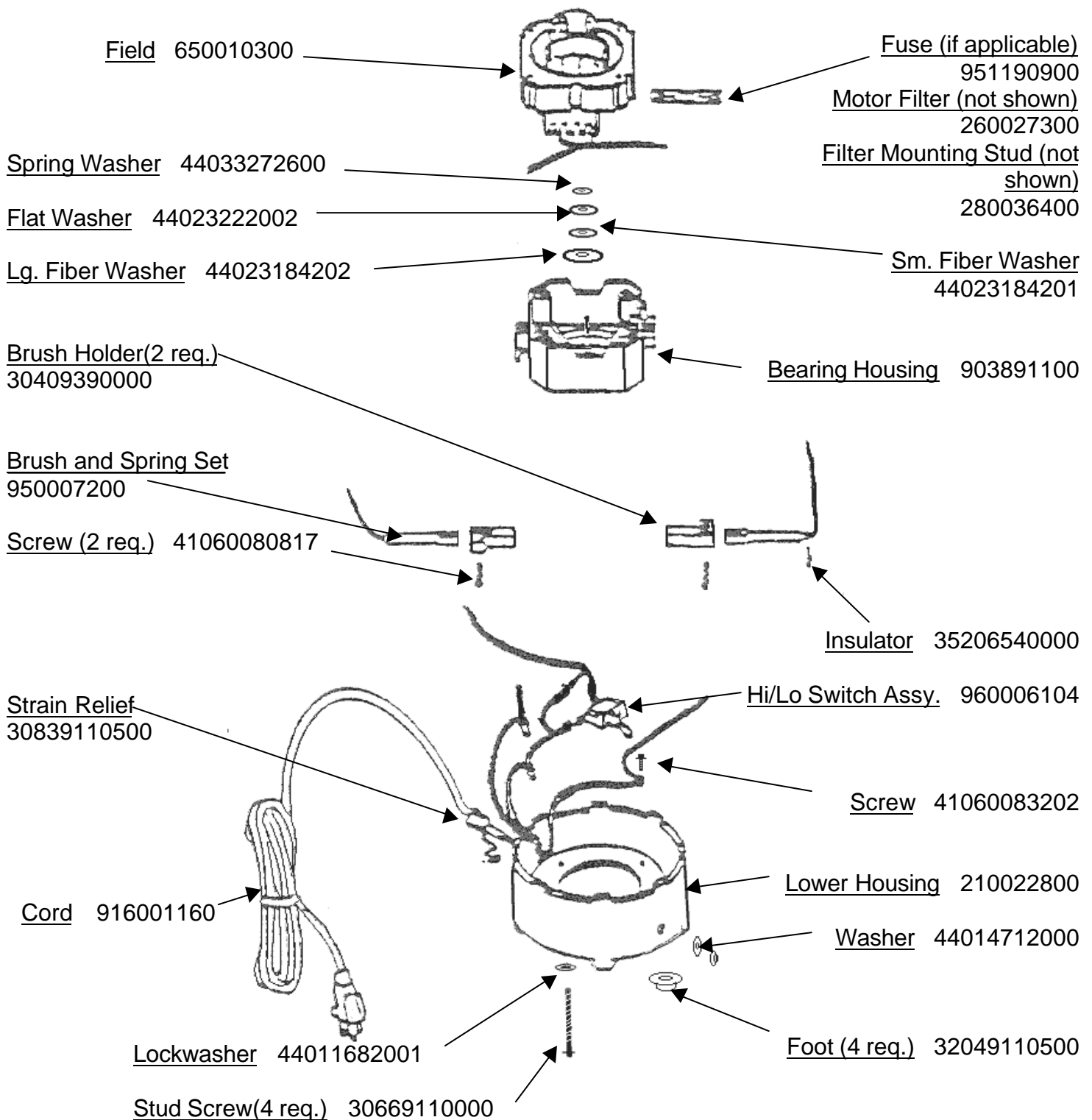
## 1G911 Upper Housing Assembly



# Hamilton Beach Commercial

March 2001 Rev. A

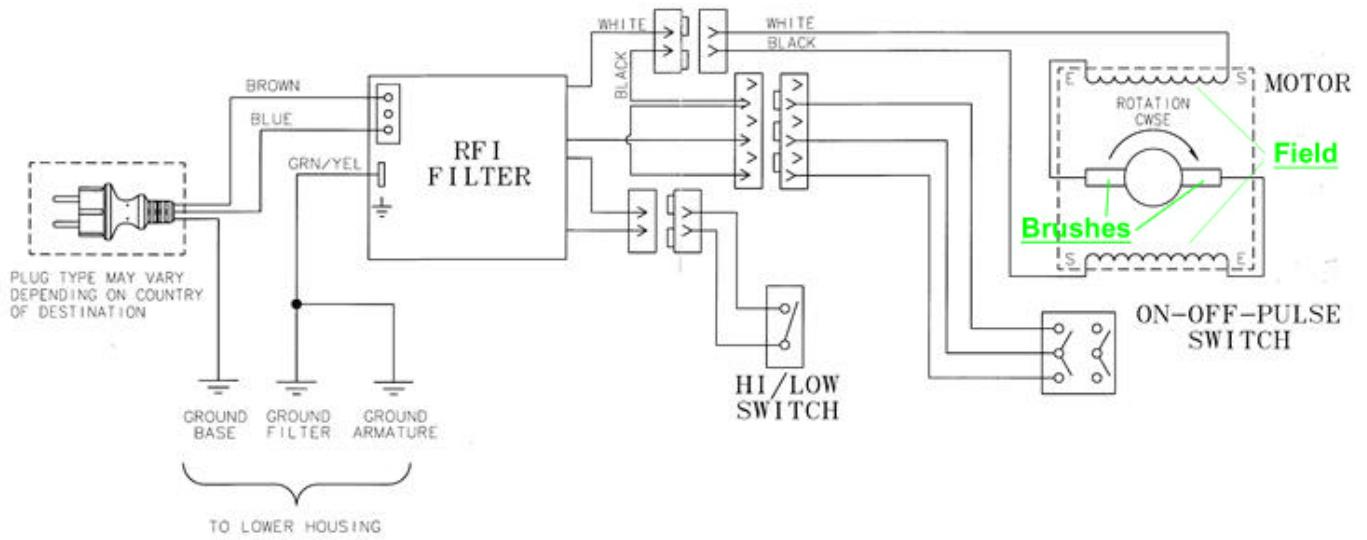
## 1G911 Lower Housing



# Hamilton Beach Commercial

March 2001 Rev. A

## 1G911 Wiring Diagram



# Hamilton Beach Commercial

March 2001 Rev. A

## **1G911 Technical Information**

### **Recommended Parts**

- Clutch
- Cutter Assembly
- Cutter Gasket
- Armature
- Field
- Brush and Spring Set
- Bearing Housing
- Motor Mount
- Baffle Plate
- Baffle Springs and Screws
- Motor Assembly Washers
- Speed Diode Assembly
- Speed Switch w/Lockwasher
- On/Off Switch

### **Tech Tips**

- The 911 is a food blender.
- Flat Washer (pn- 44022522000) is used between the upper housing and clutch on the occasional unit where the clutch exhibits some mild drag on the upper housing. This is most commonly caused by a slightly “taller” than usual field height.  
If you’ve replaced the field in a unit where this washer was implemented, reassemble the unit without the washer and examine the clutch for drag against the upper housing. If no drag is apparent, the washer need not be reused.  
Any standard flat washer that is .032”-.035” / .250” I.D. / .450” O.D. may be used as a replacement.

### **Defects**

- **Symptom:** No power up.
- **Defect:**
  - Defective armature, replace.
  - Power switch not passing voltage, replace.
  - Loose or broken lead connection. Inspect cord and internals and repair.
  - Open or shorted field, confirm and replace.
- **Symptom:** High speed doesn’t work.
- **Defect:**
  - Loose or broken connection, inspect and repair.
  - Speed switch defective, replace.

# Hamilton Beach Commercial

March 2001 Rev. A

## **1G911 Technical Information - continued**

- **Symptom:** Low speed doesn't work.
- **Defect:**
  - Loose or broken connection, inspect and repair.
  - Speed control diode defective, replace.
- **Symptom:** Burning smell / smoke.
- **Defect:**
  - Clutches worn and slipping, not covered under warranty.
  - Open / shorted armature, replace.
  - Open / shorted field, replace.
- **Symptom:** Motor rotates backwards (counterclockwise).  
**Defect:** The brush leads have been reversed, reverse and test.