



BEECH OVENS

SELECTED BY THE WORLD'S LEADING HOTELIERS
BRISBANE, AUSTRALIA.
PH.(61)7 33970277 FAX.(61)7 33970030
Internet: www.beechovens.com Email: sales@beechovens.com.au
ABN. 87009730670

STD. RECTANGULAR OVEN WITH CHAR-GRILL

Wood / Gas Fired Ovens.

MODELS

WO RECT CG "Wood Fired Only"

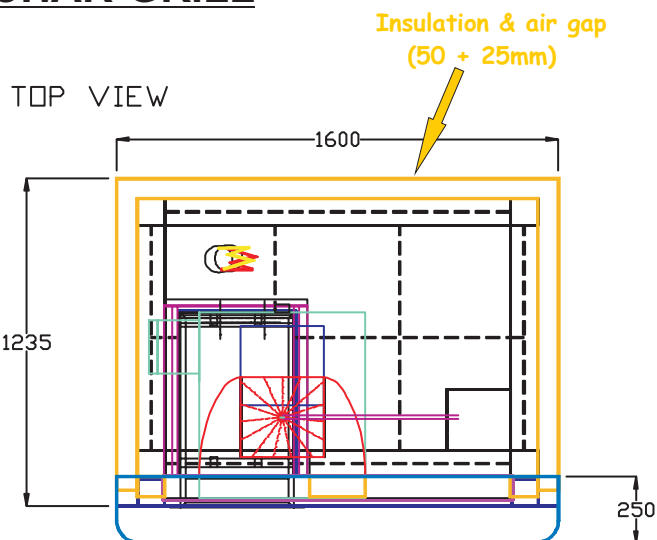
WO RECT CG GB "Gas & Wood"

WO RECT CG GO "Gas Fired Only"

SERVICES REQUIRED

240VAC/1 AMP ELECTRICAL SUPPLY
136 Mj. /129,000 BTU GAS CONNECTION.
CONNECTION TO APPROVED FLUE/DUCTING

DRAWINGS ON THIS SHEET SHOW
OPTIONAL/RECOMENDED SPRAY FILTER.
(SEE SEPARATE SHEET FOR DETAILS)



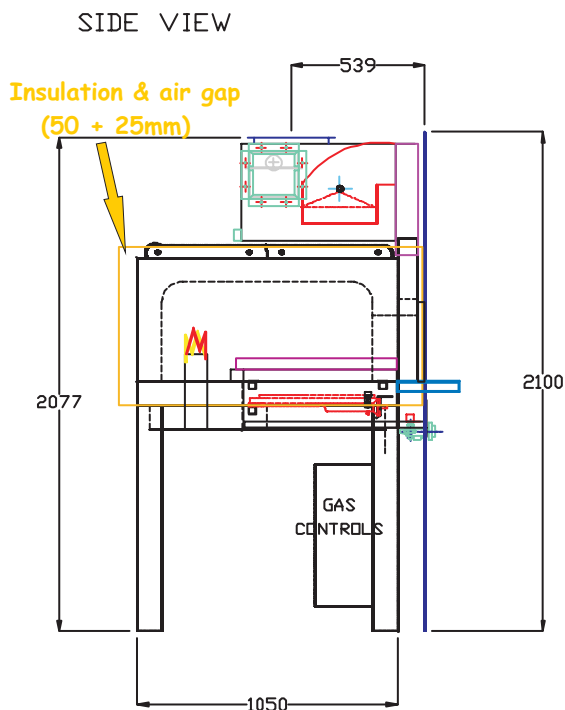
BEECH WORECT OVEN comes in three(3) sections.

(1.) Top section 1100kgs.

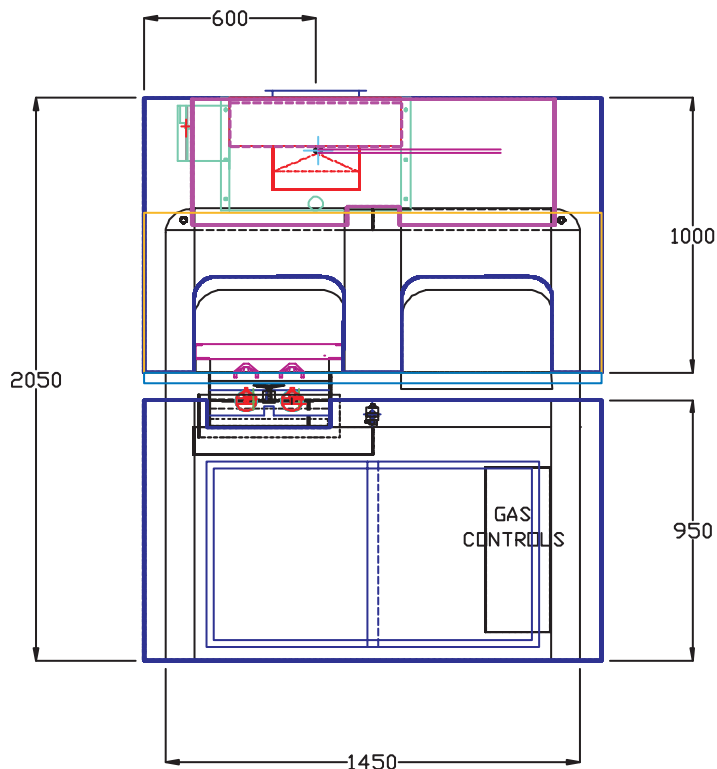
(2.) Base section. 580kgs.

(3.) Removable legs.

Facade paneling and spray filter exhaust are
optional extras (see next page).



FRONT VIEW



- *Upto 1.06sq. metres of stone hearth.
- * Stainless steel hearth's available to fit at the mouth of the oven.
- * Auto controlled gas system.(main oven).
- * Independent "Char grill control"
- * See options list next page.



BEECH OVENS

SELECTED BY THE WORLD'S LEADING HOTELIERS

BRISBANE, AUSTRALIA.

PH.(61)7 33970277 FAX.(61)7 33970030

Internet: www.beechovens.com Email: sales@beechovens.com.au

ABN. 87009730670

WORECT CG GB/GO (RECTANGULAR OVEN w/CHAR-GRILL & GAS SYSTEM)

This is one of the most popular Beech Ovens. Shown on this sheet as a std. size, it is very common to adjust the size to suit the installation requirements. Examples have been made upto 3.5 meters wide, with 3 doors and using side by side ovens upto six doors. (Very 'customise-able')

The Beech WORECT. oven is manufactured from the high grade castable ceramic material enclosed completely in a housing of 6mm mild steel. This mild steel outer frame and associated built in lifting hooks make installation easy and eliminates potential damage to the oven. The inside dimension of the oven is 1250 X 850mm and it has approx. 1.1M². cooking surface. The same oven is used for wood burning, gas assist and full gas ovens the only difference being the number of gas burners fitted. The oven is fitted with a slide out grill plate which has two(2) 25mJ ribbon burners with cast iron radiant plates below. The char-grill is located inside the oven cavity giving double cooking power to grill foods in minutes.

The spectacular performance of the Beech Oven is a result of the huge thermal mass of the ovens unique ceramic cast interior. The oven has **TWICE** the mass (thermal mass) of all other pre-cast ovens on the market.. The oven ceiling is 400mm above the floor giving it a huge cooking potential and never seen before thermal efficiencies.

The cooking surface of the oven uses high quality 3" alumina bricks, renowned for their excellent cooking attributes and incredible wear resistance. The use of bricks avoids the unsightly cracking associated with one piece floors. These bricks sit upon a 1" VF insulating board and a further 6mm reinforced steel base.

The unique design of the ovens gives them the cooking advantages of a fully assembled unit whilst having the incredible flexibility of a modular oven that can fit through a standard 700mm doorway. The reduced installation costs can be significant. The oven body comes with an unmatched, exclusive 4 year guarantee.

The oven should be installed to comply with local building and fire codes. The oven exhausts through a spigot above the mouth. The oven must be vented in accordance with local and/or national codes.

For more information refer to installation details or our web site. www.beechovens.com

Allow 400mm sq. ventilation into underside of oven for secondary gas burner air. This area is normally available below the hearth.

UNIQUE FEATURES:-

Custom features: Gas powered Char-griller, Wood and/or thermostatically controlled Gas system.

Easy installation into most areas. (Three piece assembly)

Stainless steel plug doors for all oven mouths.

Any gas type - Specify at order time.

OPTIONAL ACCESSORIES:-

OVEN TOOLS.

INTERNAL SPOTLIGHT AVAILABLE.

OPTIONAL WINDOW AVAILABLE IN ANY LOCATION.

OPTIONAL CHAR-GRILL.

VARIOUS SHAPE/DESIGN FACADES & SS HEARTHS.

THERMOSTATICALLY CONTROLLED RADIANT BURNER.

EXHAUST FAN.

SPARK ARRESTERS, SPRAY FILTERS AND FLUEING OPTIONS

APPROXIMATE PIZZA CAPACITY PER HOUR:- @400°C will cook -

Size	16"	12"	10"	8"
Pizza per hour	28	38	72	100