

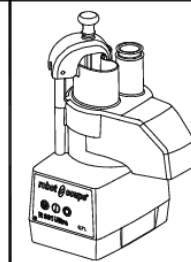
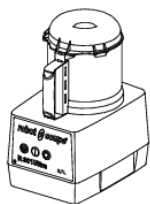
**robot coupe®**

**R 301 Ultra D**

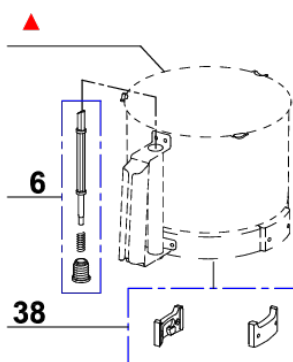
N° de série / Serial number

- 441 - - - - - 584 - - - - -

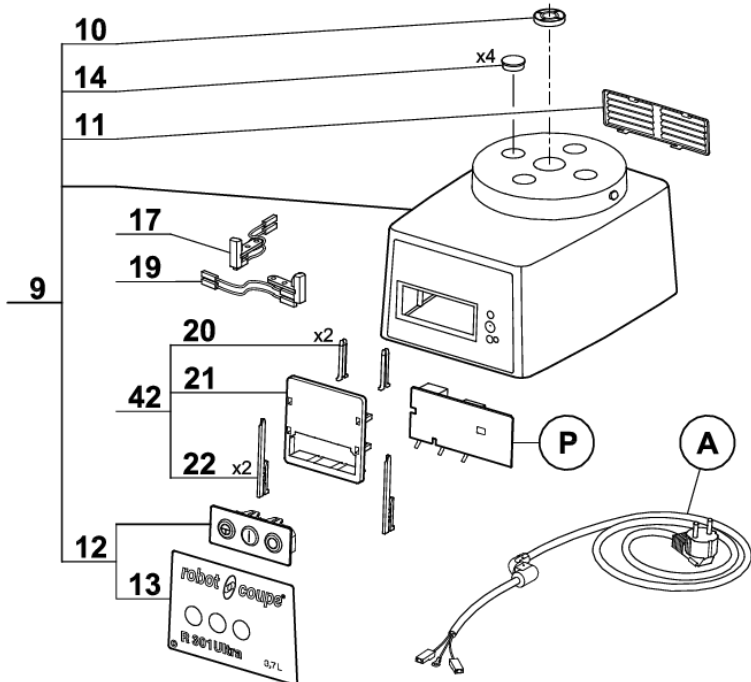
- 466 - - - - -



**Pour ancienne cuve**  
**For old bowl**



▲ N'est plus disponible.  
Commander l'index 5.  
No longer available.  
Order item 5.



■ Uniquement pour moteur 220/60/1 avec fil violet.  
Only for motor 220/60/1 with violet wire.



44



45

Maj : 11/2018

REV : i

**Index Reference Article**

|    |         |  |
|----|---------|--|
| 1  | 27278   | R301UD CUTTER 3,7L ATTCHT                            |
| 2  | 117395S | CUTTER LID R301/R401                                 |
| 3  | 27286   | R301D STRAIGHT BLADE                                 |
| 4  | 104147  | R301D BLADE CAP                                      |
| 5  | 39759   | CUTTER BOWL ASSY R301UD                              |
| 6  | 39228   | R301UD SAFETY ROD ASSY                               |
| 7  | 27287   | R301D FINE SERRATED BLADE                            |
| 8  | 27288   | R301D SERRATED BLADE                                 |
| 9  | 39317   | R301UD ANTH MOT SUP ASSY                             |
| 10 | 501010S | SHAFT SEAL   |
| 11 | 104122S | R401 VENT COVER                                      |
| 12 | 39293   | R301UD CONTROL PANEL ASSY                            |
| 13 | 407834  | R301UD FRONT PLATE                                   |
| 14 | 39676   | SCREW CAPS ASSEMBLY                                  |
| 15 | 39288   | R301UD ANTH. BASE ASSY                               |
| 16 | 39928   | BLACK FEET R201/R2-A-J80-J100 (x4)                   |
| 17 | 129356  | ARM REED SWITCH CL30/1A66                            |
| 18 | 39271   | MOTOR CENTRING RING R401                             |
| 19 | 129451S | SAFETY SWITCH 87-53 1A66 CUTTER                      |
| 20 | 59195   | BODY WEDGE   |
| 21 | 102911  | R302 PCB SUPPORT                                     |
| 22 | 29903   | FIXING KEY (X2)                                      |
| 23 | 27495   | VEGETABLE SLICER ATTACHMENT R301D/UD NEW SLING PLATE |
| 24 | 39287   | R301C VEG.SLICER LID ASSY                            |
| 25 | 29880   | R301C PUSHER ASSEMBLY                                |
| 26 | 117452S | HANDLE PUSHER CL50E/GOUR                             |
| 27 | 103703S | VEG HEAD PUSHER R301D/CL40 - WITHOUT KNOB            |
| 28 | 104922S | PUSHER GUIDE R301D                                   |
| 29 | 118324S | CL50D ROUND PUSHER                                   |
| 30 | 104919  | R301D VEG. SLICER F.LEAD                             |
| 31 | 104964S | EJECTION DISC WITH 4 WAVES CL40/R402                 |
| 32 | 104918S | VEGETABLE SLICER BOWL                                |
| 33 | 507901S | BEARING SS 6002 2RS STAINLESS STEEL AISI 440         |
| 34 | 600457  | BEARING 6201 VV                                      |
| 35 | 117610  | FAN RC   |

**Index Reference Article**

|    |         |                            |
|----|---------|----------------------------|
| 36 | 104110  | R401 MOTOR VENT            |
| 37 | 39879   | BLIX 2 RABBER STAMP        |
| 38 | 29081   | R3/R01U LOCKING PLATE ASS  |
| 39 | 39752   | BOWL HANDLE ASSY R301UD    |
| 40 | 39797   | LOCKING WASHER R301UD      |
| 41 | 39751   | SAFETY ROD ASSY R301UD     |
| 42 | 59545   | SUPPORT ASSEMBLY PCB+WEDGE |
| 43 | 59546   | SCREW ASSEMBLY 3,9X19 TORX |
| 44 | 603669S | CAPACITOR 180ÁF 120V       |
| 45 | 500289S | MOTOR RELAY                |
| A  | 39248   | POWER CORD R301D CHIN      |
| M  | 3074S   | H50 220V 50HZ R302         |
| P  | 103693S | PCB R301UD 230V            |
| X  | 600018S | CAPACITOR 60µF 250V        |
| Y  | 500289S | MOTOR RELAY                |