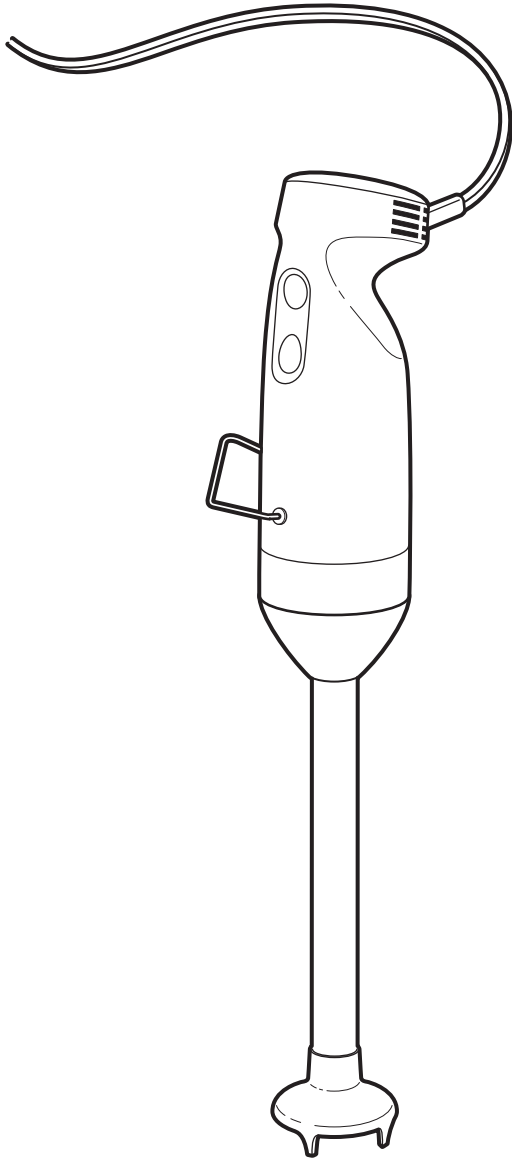


# Hamilton Beach®

COMMERCIAL



## Immersion Mixer

Operation Manual (2)

## Mélangeur de immersion

Manuel d'utilisation (4)

## Batidora de inmersión

Manual de operación (6)

## Varinha mágica

Manual do Utilizador (8)

## Frullatore a mano

Manuale per il funzionamento (10)

## Stabmixer

Bedienungsanleitung (12)

## Staaftmixer

Bedieningshandleiding (14)

## Stavmikser

Betjeningsvejledning (16)

## Doppmixer

Bruksanvisning (18)

## Stavmikser

Brukerhåndbok (20)

## Μίξερ Χειρός

Εγχειρίδιο Χειρισμού (22)

## Ручной миксер

Руководство по эксплуатации (24)

## 手提攪拌器

操作手冊 (26)

## ハンドミキサー

操作マニュアル (28)

## 핸드 믹서

사용 설명서 (30)

## الخلاط اليدوي

دليل التشغيل (35)

# Immersion Mixer Safety

**IMPORTANT:** This operation manual should be reviewed with all equipment operators as part of your operator training program.

## IMPORTANT SAFETY INSTRUCTIONS

**WARNING:** When using electrical appliances, basic safety precautions should be followed, including the following:

- Read the operation manual before using mixer. Keep the manual handy.
- Do not use an extension cord.
- Do not use to prepare drugs or in laboratory or pharmaceutical applications.
- To protect against electrical shock, never put the motor base, cord, or plug in water or other liquid.
- To reduce risk of personal injury, unplug cord from outlet when not in use, and before putting on or taking off parts.
- To prevent possibility of serious personal injury, keep hands, hair, clothing, and utensils away from the blade and whisk while using the mixer. A spatula may be used when the unit is NOT running. Avoid contacting moving parts.
- Inspect attachments daily, including blades and seals.
- Replace blades every 90 days to avoid broken blades.
- Do not place attachment in dishwasher.
- Do not use outdoors.
- Only use the Hamilton Beach attachments as provided with the unit.
- Do not let the cord hang over the edge of the table or counter. Do not let the cord contact hot surfaces, including a stovetop.
- Do not place on or near a hot gas or electric burner, or in a hot oven.
- Blades are SHARP. Handle carefully.
- When mixing liquids, especially hot liquids, use a tall container or make only small quantities at a time to reduce spills and the possibility of injury.
- Do not use a high-pressure spray gun on this product.
- Do not carry the unit by the power cord.
- Unplug when not in use and before cleaning.
- **DOUBLE INSULATION—NO SERVICEABLE PARTS.**
- Do not operate any appliance with a damaged cord or plug or after the appliance malfunctions, or is dropped or damaged in any manner.

**– SAVE THESE INSTRUCTIONS –**

### **WARNING**



#### **Pinch, Cut, and Crush Hazard**

Make sure that the mixer is off and unplugged before installing or removing attachments and parts.

Blades are sharp! Use extreme care when handling.

**DO NOT** reach or insert utensils into the container while the mixer is running.

Failure to follow these instructions can result in broken bones, cuts, or other serious injury.

### **WARNING**



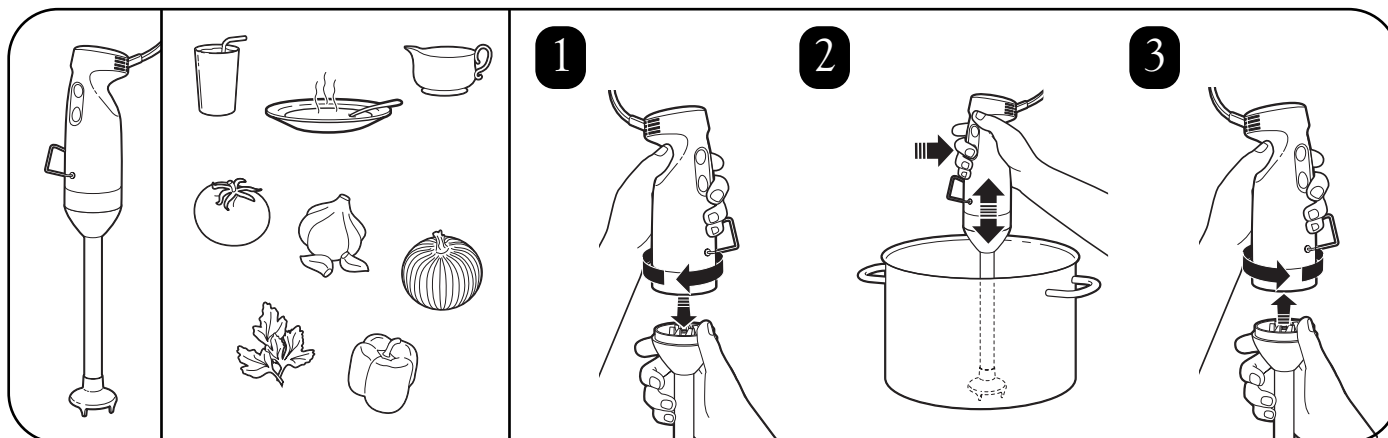
#### **Electrical Shock Hazard**

Do not use an extension cord.

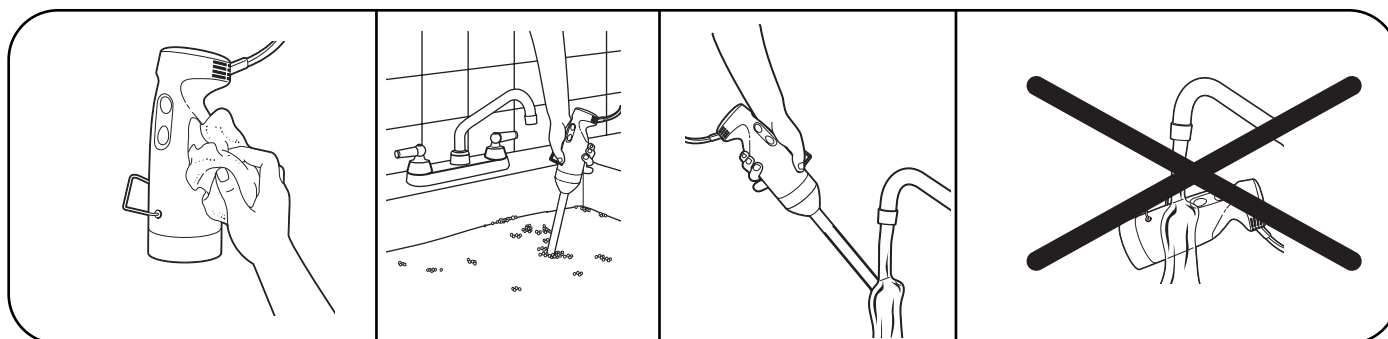
Do not put motor housing, cord, or plug in water or any other liquid.

Failure to follow these instructions can result in death, fire, or electrical shock.

# Immersion Mixer Operation Guide



# Immersion Mixer Cleaning Instructions



# 浸入式搅拌器安全性

重要说明:所有设备操作员均要学习此操作手册,这应该是操作员培训计划的一部分。

## 重要安全说明

**警告:**使用电器时应遵循基本的安全注意事项,包括以下各项:

- 使用搅拌器之前阅读操作手册。将手册随时放在手边备查。
- 双重绝缘——无耐用部件。
- 请勿用于制备药物,亦不得用于实验室或制药。
- 请勿使用延长线。
- 为预防电击,勿将电机底座、电线或插头置于水中或其他液体中。
- 为降低人身伤害的风险,未使用时以及在装卸部件之前,须拔掉电源插头。
- 为预防可能出现的严重人身伤害,使用搅拌器时请将手、头发、衣物和器具远离刀片和搅打器。在设备未运转时,可以使用压板。避免接触移动部件。
- 每日检查附件。检查附件是否出现磨损、缺口或损坏。更换出现磨损或损坏的附件。
- 请勿在户外使用。
- 只能使用随同设备一起提供的 **Hamilton Beach** 附件。
- 请勿将电线悬挂于桌子或柜台的边缘。请勿让电线接触发热表面,包括炉盖。
- 请勿放置在发热的燃气炉或电炉的上面或附近,更不能放置在热烤箱中。
- 刀片极其锋利。请小心操作。
- 在混合液体,尤其是热液体时,需要使用高容器或者每次仅混合少量液体,以减少溢出以及降低出现伤害的可能性。
- 请勿在此产品上使用高压喷枪。
- 请勿提着电源线移动设备。
- 未使用设备时以及在清洁设备之前,请拔下电源插头。
- 请勿在电线或插头损坏或者电器出现故障后仍然使用电器,勿使用以任何形式废弃或损坏的电器。

– 保留这些说明 –

### 警告



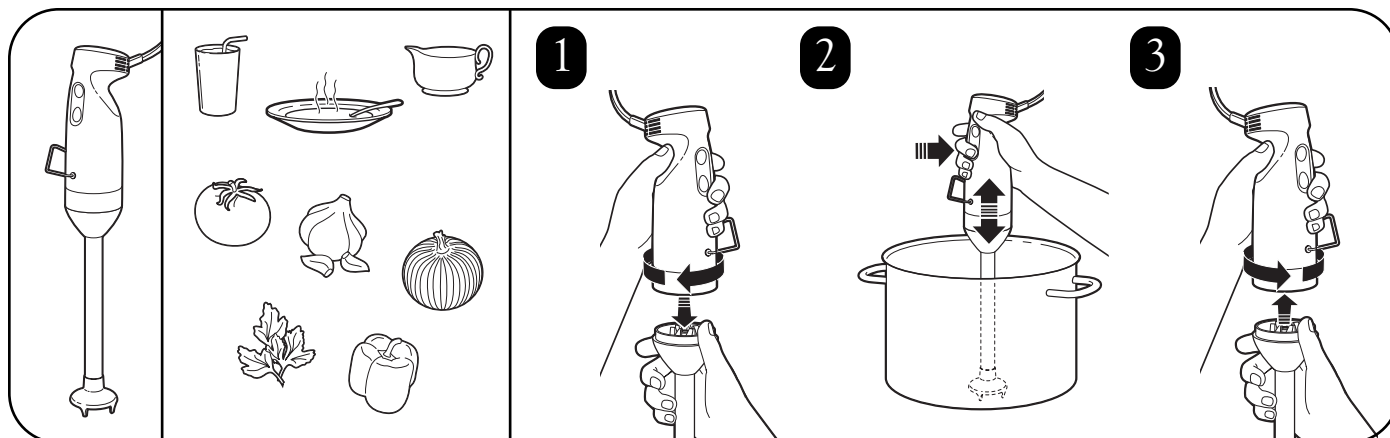
掐夹、切伤及碾碎危险。  
在安装或拆卸附件或部件之前,请确保已关闭搅拌器。  
刀片非常锋利!使用时须格外小心。  
在搅拌器运转时,请勿将器具触及或插入容器中。  
违反这些说明,可能导致骨折、切伤或其他严重的伤害。

### 警告



电击危险  
请勿使用延长线。  
请勿将电机机架、电线或插头置于水中或其他液体中。  
违反这些说明,可能致死、火灾或电击。

# 浸入式搅拌器操作指南



# 浸入式搅拌器清洁说明

