

TEMPEST™

Hamilton Beach
COMMERCIAL

- GB** Tempest Series Bar blender
Operation Manual (2)
- FR** Mélangeur de bar série Tempest
Manuel d'utilisation (4)
- ES** Mezcladora para bar Tempest
Manual de operación (6)
- PT** Liquidificador Série Tempest
Manual do Utilizador (8)
- IT** Frullatore per bar Tempest
Manuale per il funzionamento (10)
- DE** Standmixer der Tempest Serie
Bedienungsanleitung (12)
- NL** Tempest Serie Barmixer
Gebruiksaanwijzing (14)
- DK** Tempest Series Bar-blender
Betjeningsvejledning (16)
- SE** Tempest-serien barblandare
Bruksanvisning (18)
- NO** Serie Tempest Hurtigmikser
Brukerhåndbok (20)
- GR** Μπλέντερ για μπαρ Σειρά TEMPEST
Εγχειρίδιο χειρισμού (22)
- RU** Миксер для бара, серия TEMPEST
Руководство по эксплуатации (24)
- TU** TEMPEST Series Bar blender
Çalıştırma Kılavuzu (26)
- BR** Liquidificador Série Tempest
Manual de Instruções (28)
- CN** TEMPEST 系列手提搅拌器
操作手册 (30)
- JP** TEMPEST バー ブレンダー
操作マニュアル (32)
- KR** TEMPEST 시리즈 바 블렌더
사용 설명서 (34)
- SA** الخلاطة التجارية طراز TEMPEST
دليل التشغيل (37)

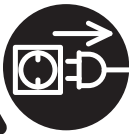
IMPORTANT SAFETY INSTRUCTIONS

WARNING — When using electrical appliances, basic safety precautions should be followed, including the following:

- Read the Operation Manual before using blender. Keep Operation Manual handy.
- Before first use, wash container assembly in hot, soapy water. Do NOT place in dishwasher.
- Plug into a grounded outlet.
- Do not remove ground.
- Do not use an adapter.
- Do not use an extension cord.
- Disconnect power before cleaning or servicing.
- To reduce risk of personal injury, unplug cord from outlet when not in use, and before putting on or taking off parts.
- Unplug the blender and inspect the power cord insulation for cracks on a weekly basis. Refer to "Technical Service" for repair or replacement.
- To protect against electrical shock, do not immerse cord, plug, or blender base in water or any other liquid.
- Do not spray the base with a high-pressure spray gun.
- Extreme caution must be used when moving an appliance containing hot oil or other hot liquids.
- Do not use appliance for other than intended use.
- Not intended for use by or near children.
- This appliance is not intended for use by persons with reduced physical, sensory, or mental capabilities, or lack of experience and knowledge, unless they have been given supervision or instruction concerning use of the appliance by a person responsible for their safety.
- The use of accessory attachments not recommended by Hamilton Beach may cause injuries.
- To reduce risk of personal injury and to prevent damage to blender or container and cutter assembly, DO NOT insert utensils into blender container while operating blender.
- Do not store any kitchen utensils in the container because the blender would be damaged if inadvertently turned on.
- To prevent possibility of serious personal injury, keep hands out of blender container while operating blender. Always operate blender with container cover in place.
- Avoid contacting moving parts. Switch off the appliance and disconnect from power supply before changing accessories or approaching parts that move in use.
- Blades are sharp. Handle carefully.
- If cutter assembly blades are loose, discontinue use immediately and replace cutter assembly. Do not attempt to repair or tighten cutter assembly.
- Inspect container and cutter assembly daily. Do not use broken, chipped, or cracked container. Check cutter for wear, nicks, or broken blades. Do not use broken, loose, or cracked cutting blades.
- Do not use outdoors.
- This appliance is intended for short periods of operation, with a rated operating time of 3 minutes.
- Do not leave blender unattended while it is operating.
- To prevent damage to blender, container, or cutter assembly, DO NOT move or shake blender while in operation. If blending action stops during operation, turn blender OFF (O), remove container from base, remove container cover, and use a thin rubber spatula to push mixture towards cutters.
- When blending hot liquids, remove center-piece of two-piece lid. Hot liquids may push lid off jar during blending. To prevent possible burns: Do not fill blender jar beyond the 1 quart (1 liter) level. With the protection of an oven mitt or thick towel, place one hand on top of lid. Keep exposed skin away from lid. Start blending at lowest speed.
- Always operate blender with container cover in place.
- This blender is designed with motor overload protection. If the motor stops during operation due to overheating, unplug the unit and allow it to cool down for 15 minutes. Plug unit back after 15 minutes to resume normal operation.
- The normal function of this product may be disturbed by strong electromagnetic interference. If this occurs, simply reset the product and resume normal operation by following the operation manual. If normal operation cannot be resumed, place the product in a different location.
- Do not operate any appliance with a damaged cord or plug or after the appliance malfunctions, or is dropped or damaged in any manner. Refer to "Technical Service" for instructions on examination, repair, or electrical or mechanical adjustment.
- If the supply cord of this appliance is damaged, it must be replaced by the manufacturer or its service agent or a similar qualified person.

UK ONLY: If fitted with a non-rewirable U.K. plug, the 13 amp fuse approved by ASTA to be B.S. 1362 must be used. If you need a replacement fuse carrier, it must be replaced with the same colour coded carrier with the same markings. Fuse covers and carriers can be obtained from approved service agents.

– SAVE THESE INSTRUCTIONS –



Electrical Shock Hazard
Disconnect power before
cleaning blender base.
Failure to follow these
instructions can result in
death or electrical shock.



Electrical Shock Hazard
Plug into a grounded outlet.
Do not remove ground.
Do not use an adapter.
Do not use an extension cord.
Failure to follow these instructions can
result in death, fire, or electrical shock.



Cut Hazard
Always place cover on container when
blending.
Do not put hands, spoons, or other
utensils in container when blending.
Failure to follow these instructions can
result in broken bones, cuts, or other
injuries.

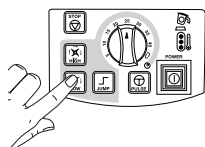


Burn Hazard
Always use caution when blending
hot contents.
Failure to follow these instructions can
result in burns.

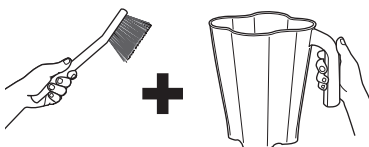
Sanitizing

Sanitize using 1 tablespoon (15 ml) of household bleach per 1 gallon (3.8 liter) of clean, cool water (60°F/16°C), mixed according to the instructions on the bleach.

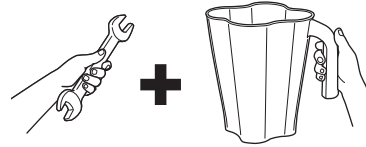
1. Fill container with sanitizing solution, replace cover and filler cap and run on LOW (1) speed for 2 minutes. Empty container.
2. Wipe exterior with soft cloth dampened with sanitizing solution.
3. Immerse cover and filler cap in sanitizing solution for 2 minutes.
4. Place empty container on base and run on HIGH (2) speed for 2 seconds to remove any moisture from the cutter assembly.
5. **When ready to use**, rinse with clean water.



38



40



42

Technical Service

For assistance or replacement parts, call our
Technical Service number:
++910-693-4277

www.commercial.hamiltonbeach.com

INSTRUCTIONS FOR PROPER DISPOSAL OF THIS PRODUCT PURSUANT TO THE EUROPEAN UNION'S DIRECTIVE ON ELECTRICAL WASTE

Please do not dispose of any electrical equipment as ordinary waste. Help conserve natural resources and protect the environment: when you have finished using this product, please dispose of it at your local waste collection or recycling center in the area reserved for electrical equipment. Contact your local authority to find the nearest waste collection center. To remind you to dispose of this product responsibly and separately from ordinary waste, it is marked with the symbol of a crossed-out trash bin.

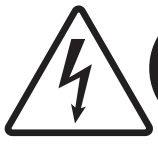


重要的安全说明

警告 – 在使用电器用具时，应遵守基本的安全防范规则，包括以下几点：

- 在使用搅拌机之前，请先阅读操作手册。将操作手册放在可方便拿到的地方。
- 在首次使用之前，请用热肥皂水清洗容器部件。不得将其放在洗碗机内冲洗。
- 将插头插入接地插座。
- 不要移动所插范围。
- 不要使用转换接头。
- 不要使用延长电线。
- 在清洗或保养之前请先断开电源。
- 为了减少人身伤害危险，在不使用和安放或拆卸零件时请先拔掉插头。
- 拔掉搅拌机插头，并每周检查一次电源线绝缘材料是否开裂。请参阅“技术服务”中的修理或更换部分。
- 为防止电击事故，不要让电线、插头或搅拌机底部浸水或浸入其他的液体物质。
- 不要用高压喷枪喷射底部。
- 在移动用具内的热油或其他热液体时必须特别小心。
- 除了有目的地使用外，不要使用用具。
- 不得让儿童靠近或使用此用具。
- 本装置的设计目的并非由体力、感知力或智能下降或缺乏经验和知识的人员使用，除非由负责其安全的人员在旁边提供有关装置使用的监督或指导。
- 使用未经 Hamilton Beach 建议的附件可能会造成伤害。
- 要减少个人受伤的危险和防止搅拌机或容器和刀具部件的损坏，在使用搅拌机时不得将器具插到搅拌机内。
- 不要在容器内储存厨房用具，因为如果不注意打开搅拌机时，搅拌机会损坏。
- 为防止可能遭受严重的人身伤害，在操作搅拌机时将手放在搅拌机玻璃容器的外部。总是将玻璃罐盖放在适当的位置后使用搅拌机。
- 避免与活动的零件接触。更换附件或者接触使用中活动的零件前，请关闭本装置，并断开与电源的连接。
- 刀片很锋利。小心操作。
- 如果刀具部件的刀片松动，立即停止使用，并更换刀具部件。不要尝试修理或拧紧刀具部件。
- 每天检查容器和刀具部件。请勿使用破裂、有缺口或者裂缝的容器。检查刀具具有无磨损、缺口或断损的刀片。请勿使用破裂、松动或者裂缝的刀片。
- 不要在户外使用。
- 此用具规定为在短期内操作，其额定的操作时间为 3 分钟。
- 在搅拌机操作时不要走开。
- 为防止损坏搅拌机、容器或刀具部件，在操作时不得移动或摇动搅拌机。如果在操作过程中停止搅拌，请关闭（OFF (O)）搅拌机，从底部移除容器，拔掉容器盖，并使用薄薄的橡皮刮刀将混合物推到刀具处。
- 搅拌热液体时，请拆下分体盖的中心块。热液体在搅拌过程中可能将盖子推出容器口。为了防止可能的灼伤：加入搅拌机容器的液体不可超过1夸脱（1升）水平。在烤箱手套或者厚毛巾的保护下，将一只手放到容器顶部。裸露的皮肤应远离容器。以最低的速度开始搅拌。
- 此搅拌机设计带有马达过载保护。操作过程中，如果马达因过热而停转，拔下插头，允许其冷却15分钟。15分钟后，接上插头，恢复正常操作。
- 本产品的正常功能可能会因受到强大的电磁干扰而中断。如果出现这种情况，只需复位本品，并根据操作手册恢复正常操作。如果不能恢复正常操作，请将产品放到不同的位置。
- 不要使用破损的电线或插头或在用具发生故障时来操作任何用具，或以任何方式撤除或损坏用具。请参阅“技术服务”以获取关于检查、修理或电动或机动调整的说明。
- 要总是将容器盖放在适当的位置后操作搅拌机。

- 注意以下这些说明 -



电击事故危害
在清理搅拌器底部之前断开电源。不按照此说明做可能会致死或遭到电击。



电击危险 将插头插入接地插座。不要移动所插范围。
不要使用转换接头。
不要使用延长电线。
不按照此说明做可能会致死、引起火灾或遭到电击。



刀伤危险
在搅拌时要总是将盖子盖在容器上。
在搅拌时不要将手、勺子或其他器具放在容器内。不按照这些说明做可能会引起骨折、刀伤或其他损伤。

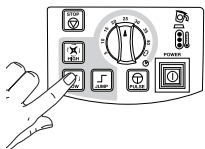


烫伤危险
在搅拌热物时一定要小心。
不按照此说明做可能会导致烫伤。

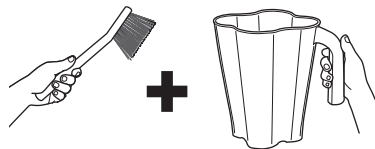
清洗消毒

在清洗消毒时，根据漂白说明，
每 1 加仑（3.8 公升）清洁的冷水（60° F/16° C）兑入 1 汤匙（15 毫升）家用漂白剂来混合使用。

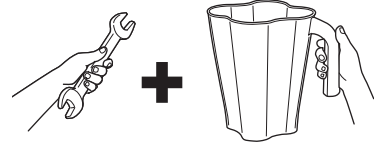
1. 将容器内装满清洁液，更换盖子和漏斗盖，并以最低的 LOW（低）(1) 速度运行 2 分钟。空容器。
2. 用清洁液将软布打湿后擦洗外部污垢。
3. 将部件盖和漏斗盖在清洁液中浸泡 2 分钟。
4. 将空容器放在底部，并调到 HIGH（高）(2) 运行 2 秒钟，以除去刀具部件的水分。
5. 在准备好使用时，先用干净水冲洗一下。



38



40



42

技术服务

有关帮助或更换零件，请致电我们的

技术服务部：

++910-693-4277

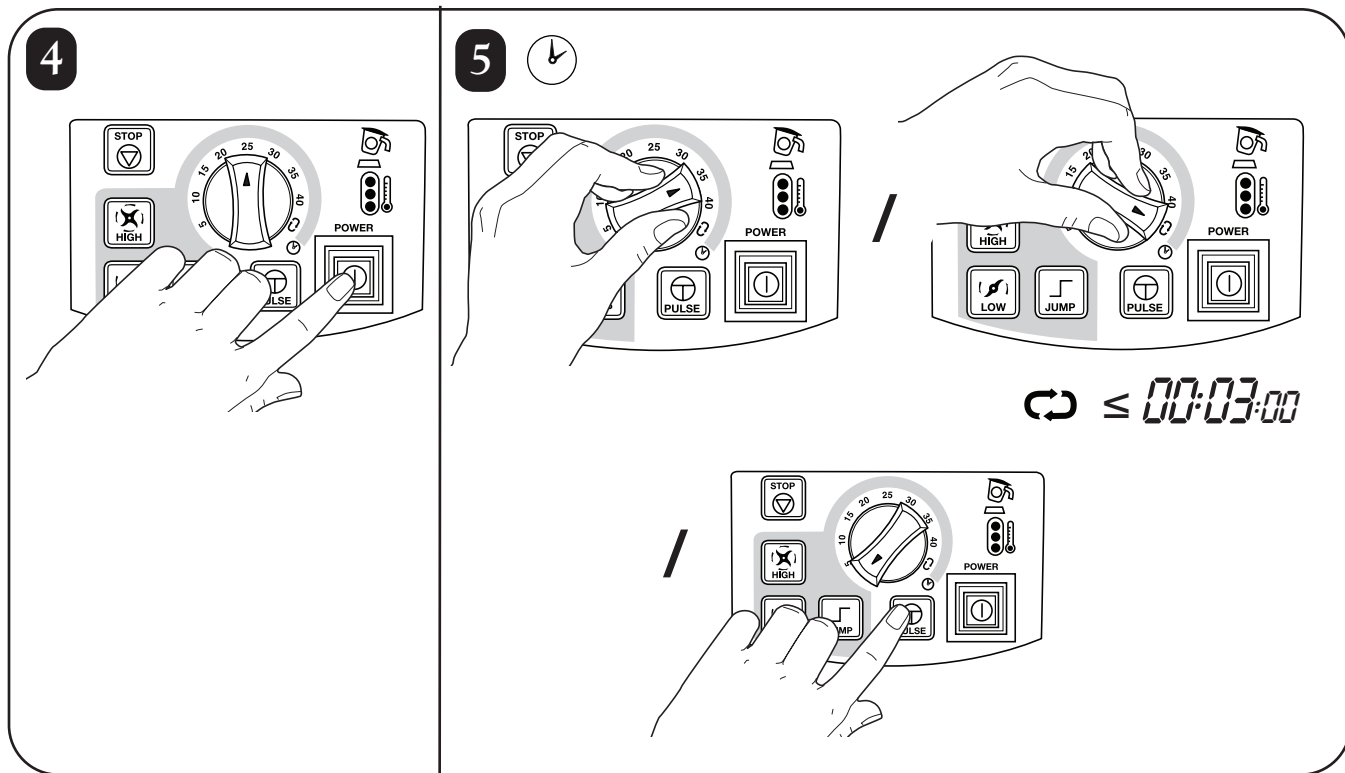
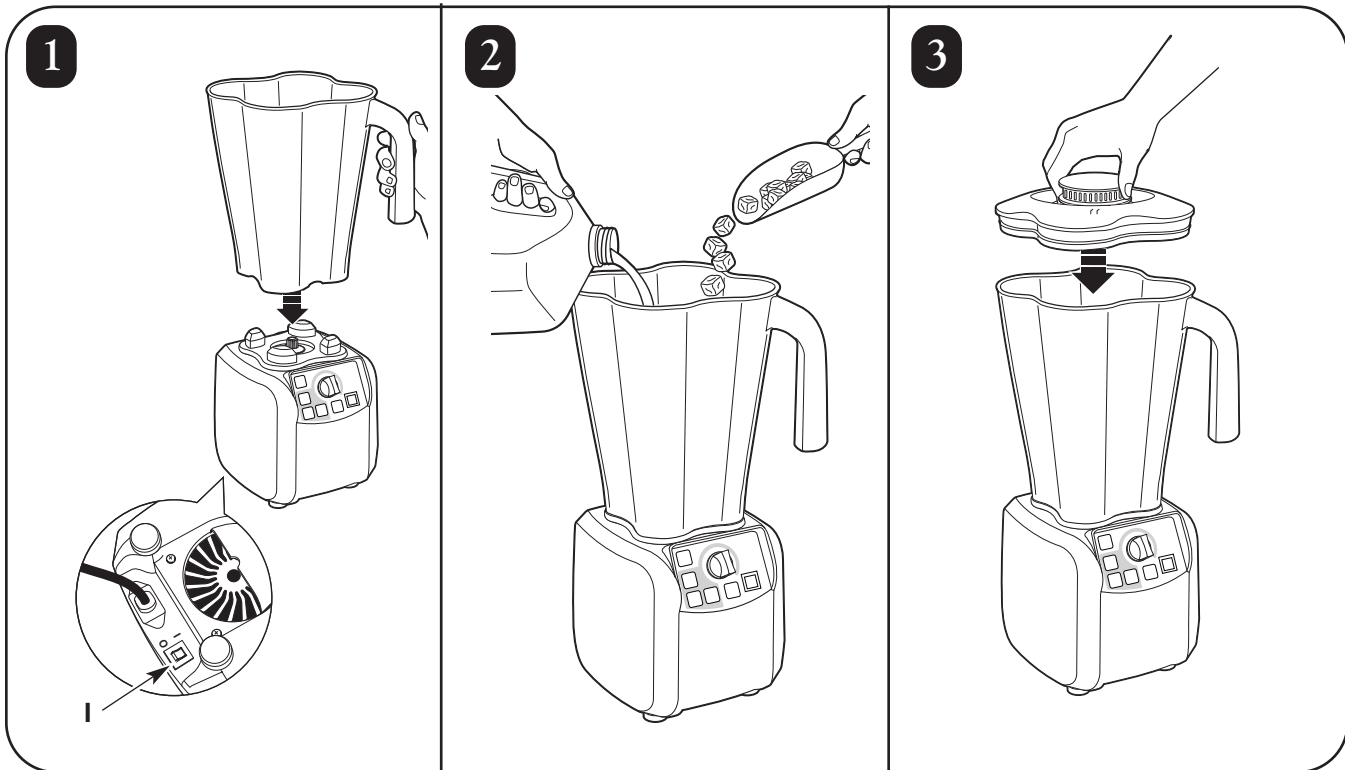
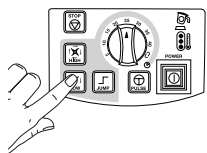
www.commercial.hamiltonbeach.com

按照欧盟的电消耗指示对这种产品进行适当处理的说明

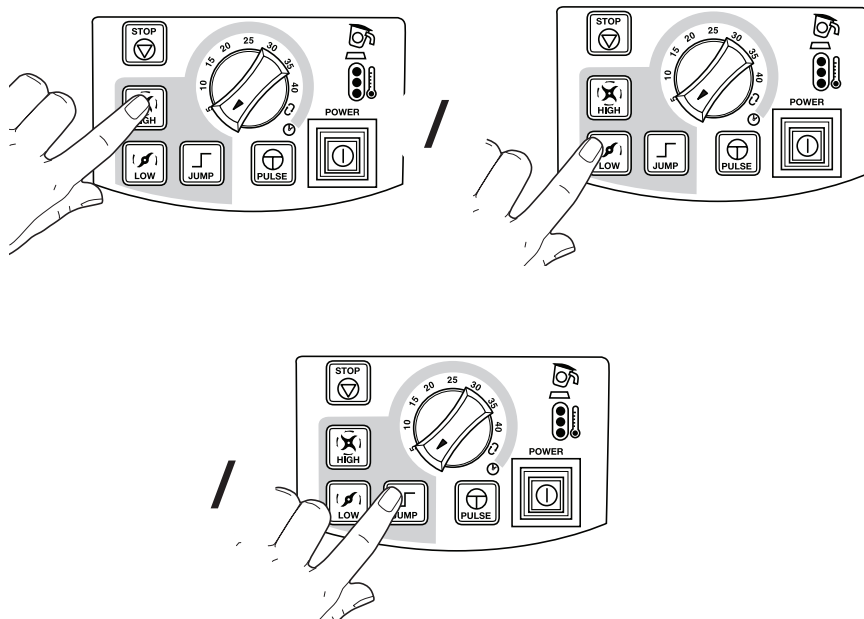
请不要像处理普通垃圾一样处理任何电器设备。帮助保存自然资源，保护环境：当您使用完本产品时，请在为电器设备预留区域的当地垃圾收集或回收中心进行处理。

与当局联系，以便能找到最近的垃圾收集中心。为了提醒您合理处置本产品（有别于处理普通垃圾），垃圾箱上标记了不可循环符号。

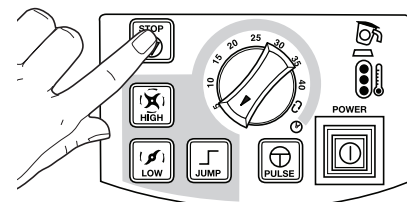




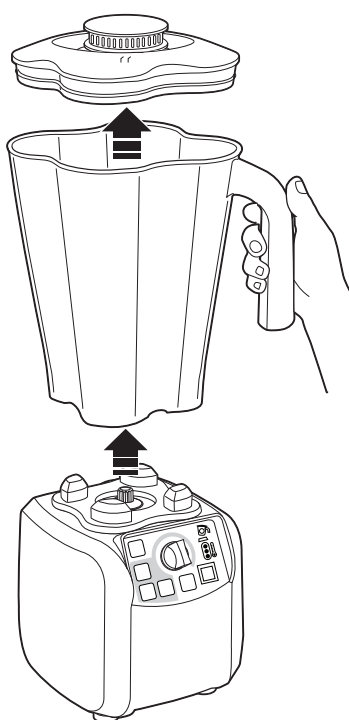
6



7

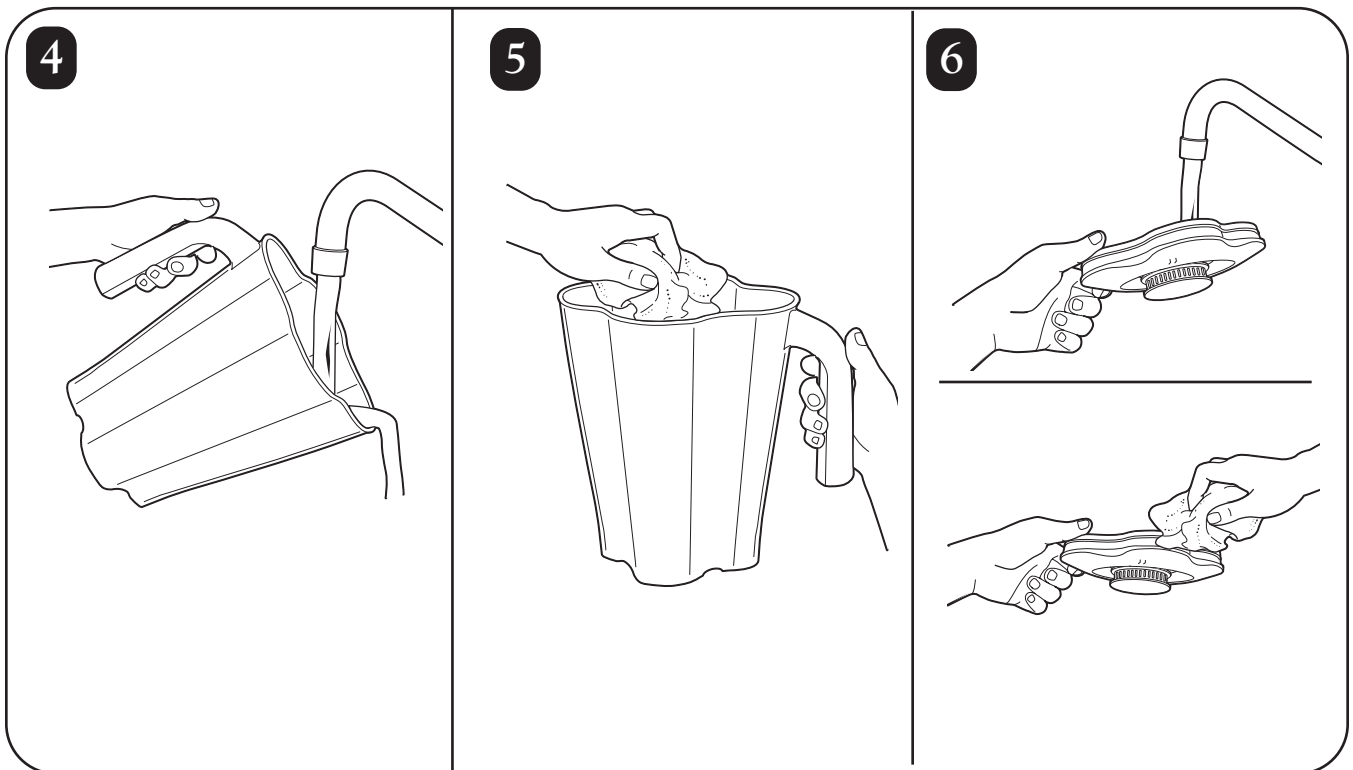
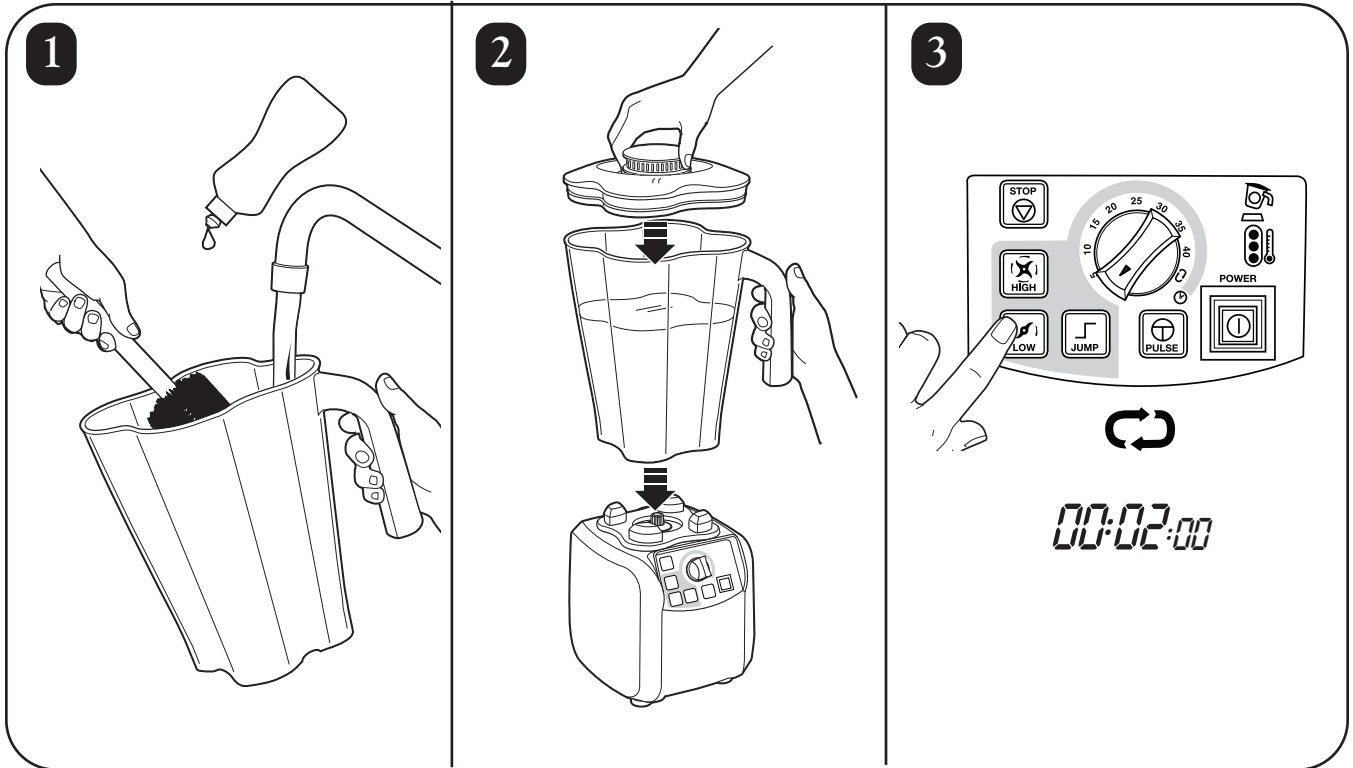
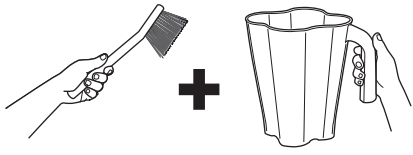


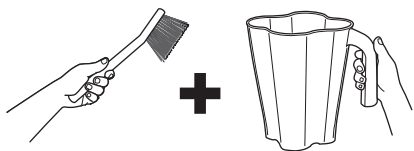
8



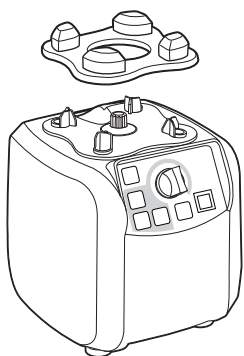
9



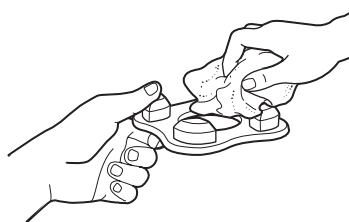
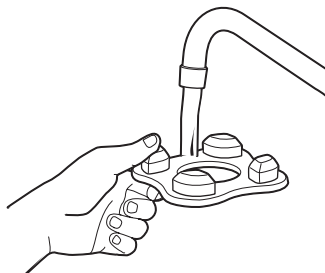




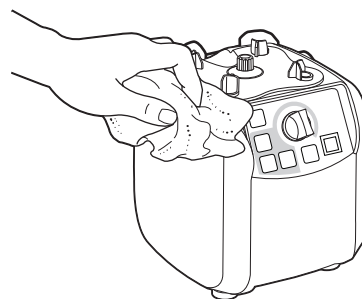
7



8



9



10

